



Curve Ceiling Baffle

FilaSorb™ 24

acoufelt
making quiet

Product Detail

Product	Curve Ceiling Baffle
Surface	Ceiling
Composition	100% Polyester
Material	FilaSorb™
Recycled Content	60% min.
Thickness	24mm +/- 10%
Weight	0.98 lb/ft ² +/- 10%
Lengths	1219.2mm Or 1524mm Or 2438.4mm Or 2794mm
Depths	203.2mm Or 254mm Or 304.8mm Custom size available upon request.

Technical Data

Fire Test Method Number	AS ISO 9705:Group 1 ASTM E84-17a Class A
Indoor Air Quality	Low VOCs emission, formaldehyde and Phenol-free
Light Fastness	ISO 105-B02 1994, 6-7

Acoustic Performance

Product acoustic performance testing is in progress.

Guarantees

Lead Time	Ships in 4-6 weeks
Light Fastness Warranty	10 Years*
Customizable	Yes

* conditions apply

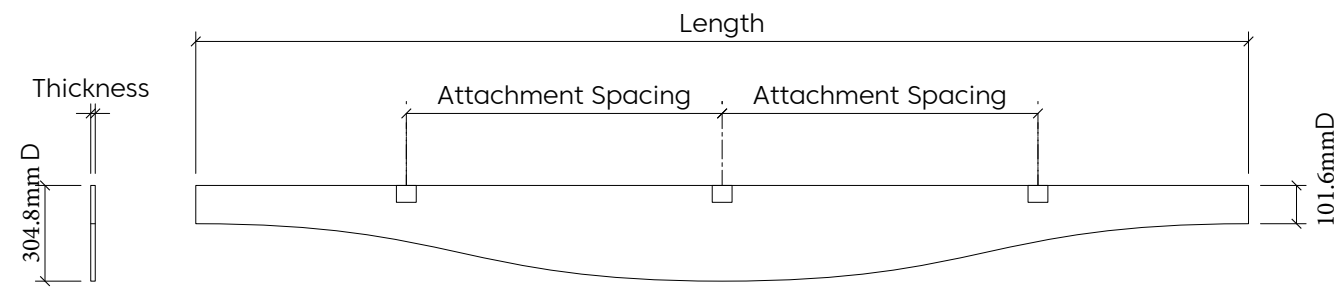
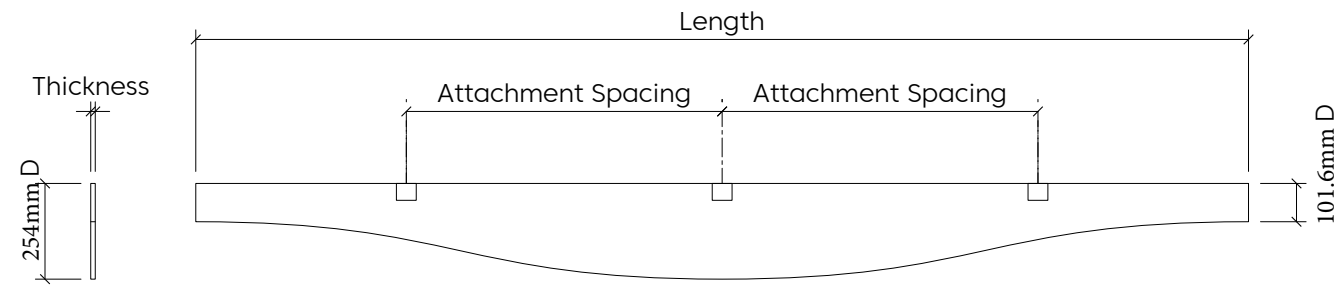
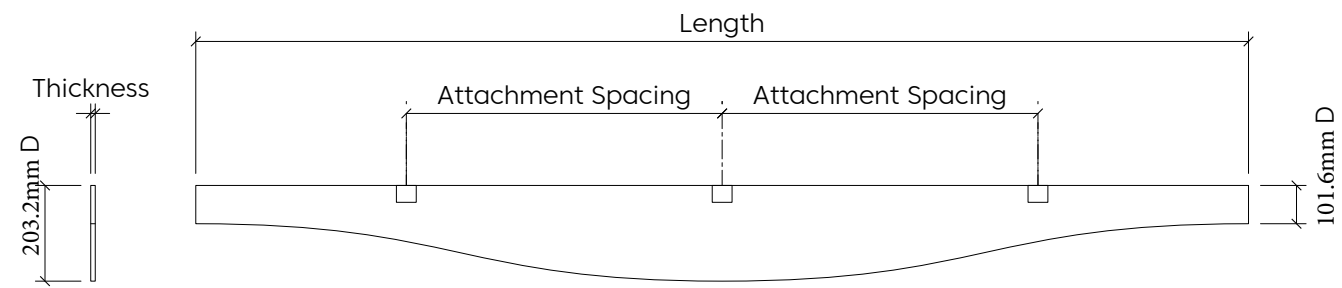
Environmental Attributes

- Declare Certification
- LCB Red List Free
- Phenol And Formaldehyde Free
- Low VOC
- CDPH Compliance
- Aligns With Building Standards

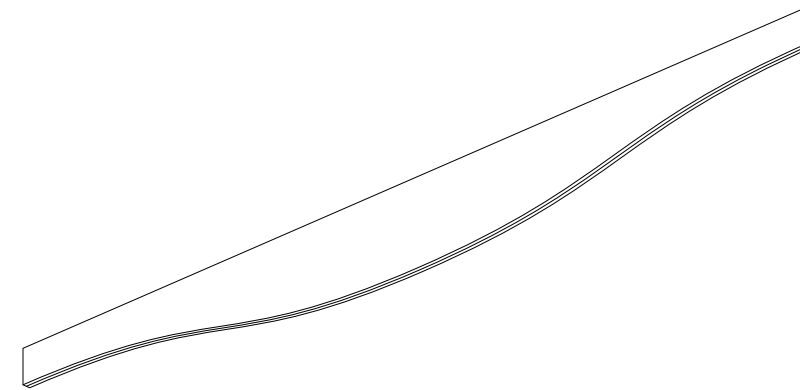


Design

Elevation



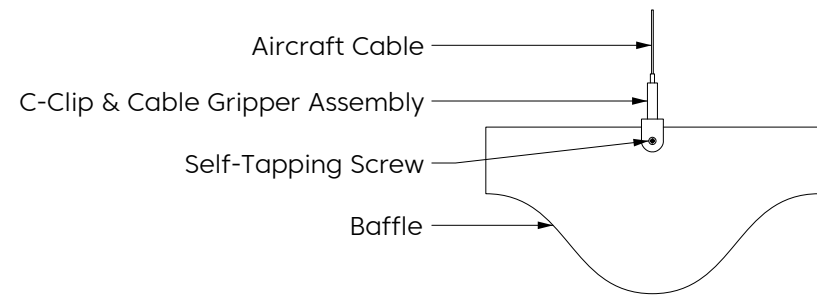
Perspective



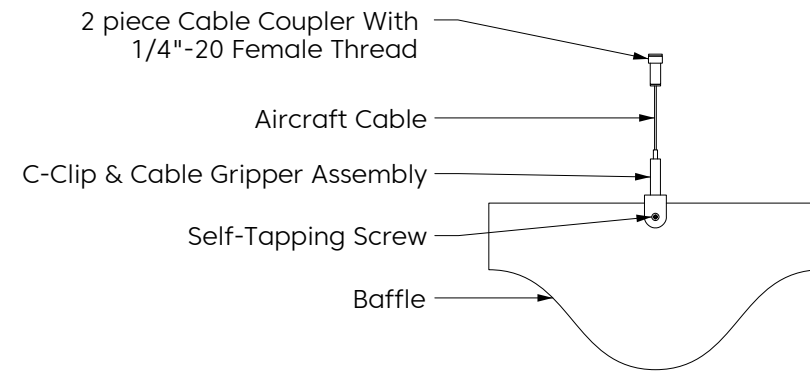
* Number of connections may vary depending on length

Mounting Methods

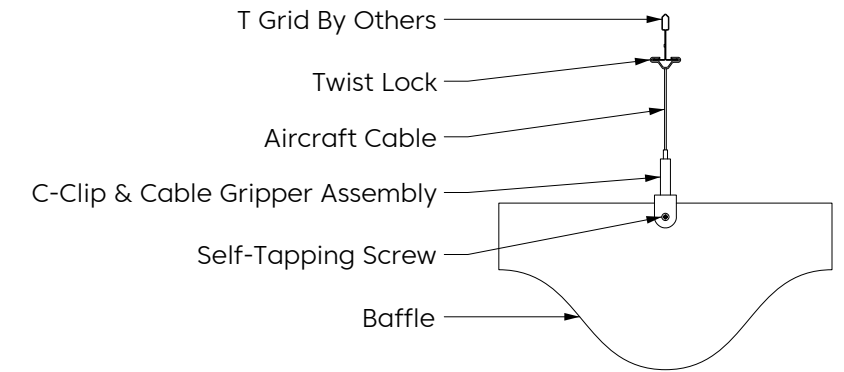
Cable



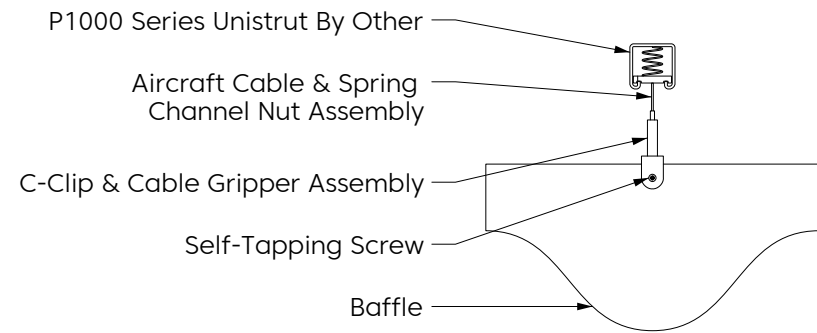
Cable To Deck



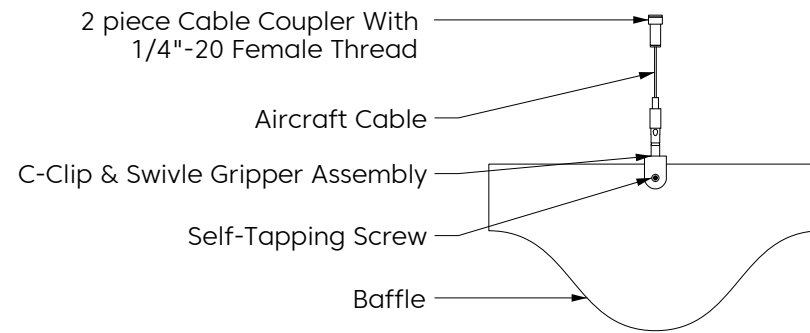
Cable To T Grid



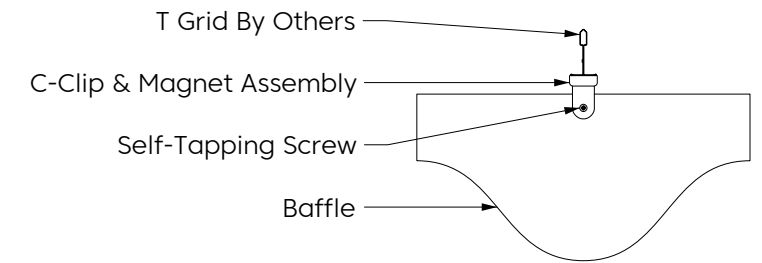
Cable To Unistrut



Swivel Cable To Deck

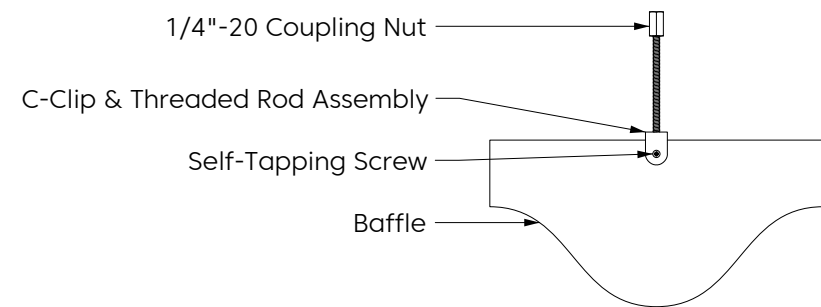


Magnet To T Grid

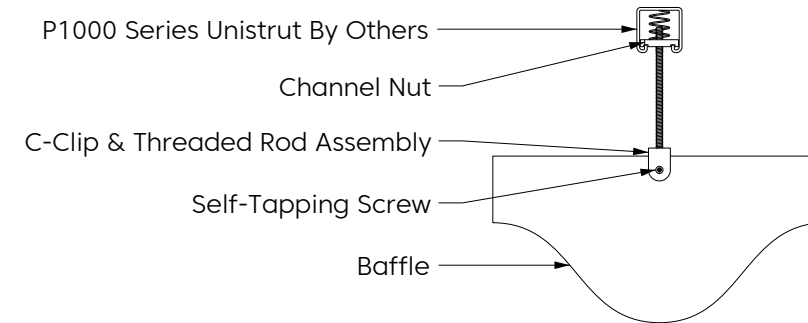


Mounting Methods

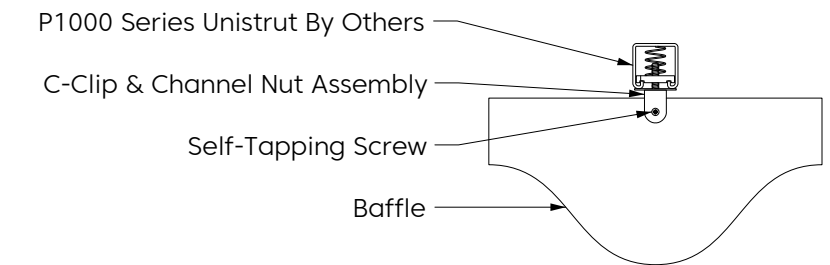
Threaded Rod



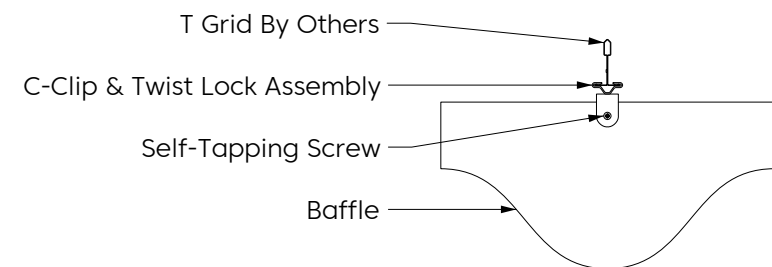
Threaded Rod To Unistrut



Direct To Unistrut



Twist Lock To T Grid



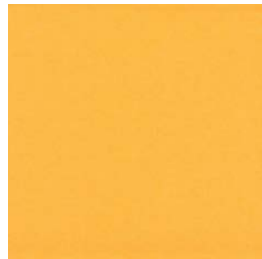
Colorways



Lipstick Red
LI14



Carrot
CA08



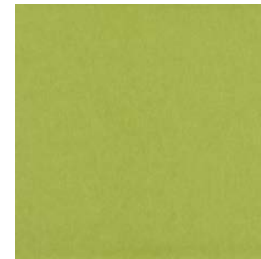
Butter
BU07



Popcorn
PO26



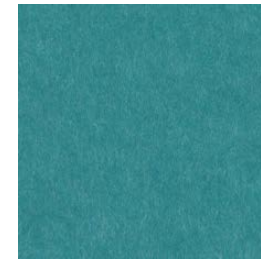
Pistachio
PI25



Wasabi
WA29



Thistle
TH28



Peacock
PE20



Oregano
OR18



Kale
KA12



Denim
DE09



Midnight
MI16



Azur
AZ05



Marine
MA15



Periwinkle
PE23



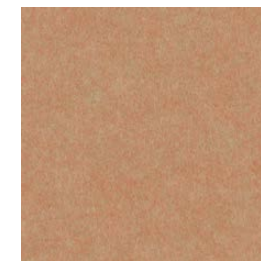
Iris
IR10



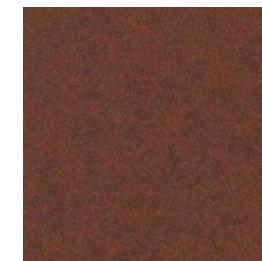
Berry
BE06



Lilac
LI13



Peach
PE19



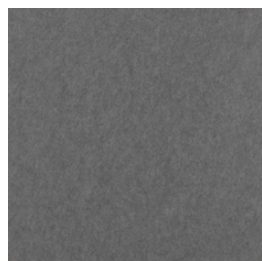
Peppercorn
PE22



Piano Black
PI24



Charcoal
CH01



Slate
SL27



Grey
GR02



Metal
ME03



Platinum
PL04



White
WH12



Pearl
PE21



Ivory
IV11