



Billow

Ceiling Baffles

Premier Collection

Billow brings refreshing softness to today's hard-edged spaces with curved lines, natural texture, and high sound performance. Multiple sizes, colors, and mounting options give you maximum freedom to precisely create the environment you envision and design a signature pattern to float effortlessly above any space.

Specifications

Surface	Ceiling
Material	FilaSorb™ polyester felt
Weight	2400gsm
Standard Sizes	Height: 102mm up to 305mm H (1" increments) Width: 356mm W Depth: 51, 76mm D Length: 1219, 2438mm L



Billow Ceiling Baffles in White

Technical

NRC Rating	1.65*
Fire Test	Test results pending
Water Sorption	ASTM C1104-2019 (A Modified) Water sorbed by weight: 0.20% (based on a 12mm thick panel)
Colorfastness	ISO 105-B02, 6-7

* Test results available upon request.

Details

Lead Time	Refer to Product Lead Time Matrix
Origin	Australia
Warranty	Product: 20 years* Colorfastness: 20 years*

* Conditions apply

Environmental

Recycled Content	Minimum 60%
Energy	Generated using 40% solar energy
Indoor Air Quality	VOC less than/equal to 0.5mg/m3
Recyclable	100%*
Certifications	Environmental Product Declaration Declare Certification - LBC Red List Free (third-party verified) SCS Global Indoor Advantage Gold

* PET is recyclable through participating partners.

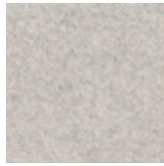


For questions or additional product information,
visit acoufelt.com.au or call 1800 626 462

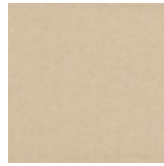
Billow Ceiling Baffles | May 2026



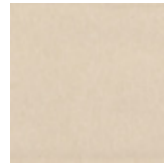
White
WH12



Milkyway
MI74



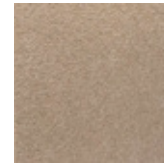
Ivory
IV11



Pearl
PE21



Valentine
VA70



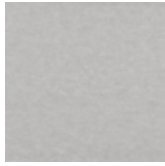
Quartz
QU67



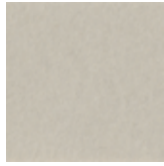
Stonewash
ST72



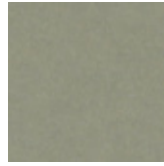
Sea Salt
SE57



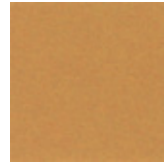
Platinum
PL04



Almond
AL55



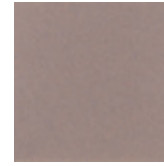
Pistachio
PI25



Turmeric
TU60



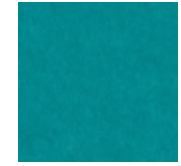
Flamingo
FL61



Amethyst
AM69



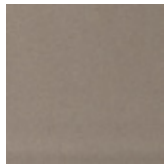
Periwinkle
PE23



Peacock
PE20



Metal
ME03



Mushroom
MU75



Celery
CE65



Wheat
WH68



Peach
PE19



Lilac
LI13



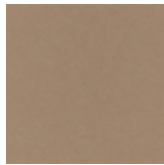
Marine
MA15



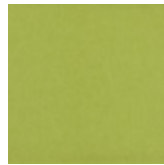
Sencha
SE58



Grey
GR02



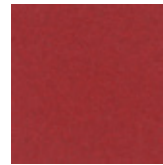
Umber
UM54



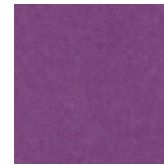
Wasabi
WA29



Popcorn
PO26



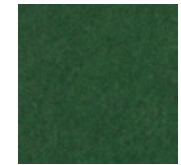
Currant
CU59



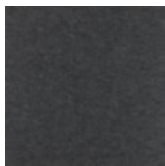
Berry
BE06



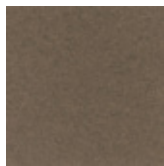
Azure
AZ05



Oregano
OR18



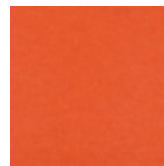
Charcoal
CH01



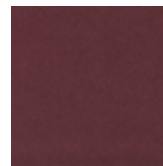
Walnut
WA56



Eucalyptus
EU71



Carrot
CA08



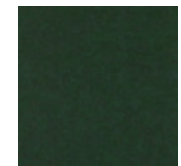
Loganberry
LO77



Granite
GR62



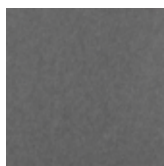
Denim
DE09



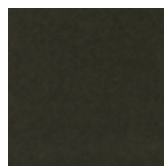
Kale
KA12



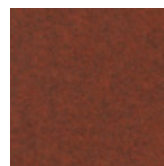
Piano Black
PI24



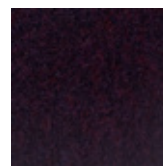
Slate
SL27



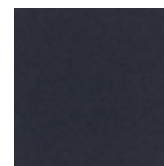
Nori
NO76



Peppercorn
PE22



Shiraz
SH63



Flint
FL64



Midnight
MI16

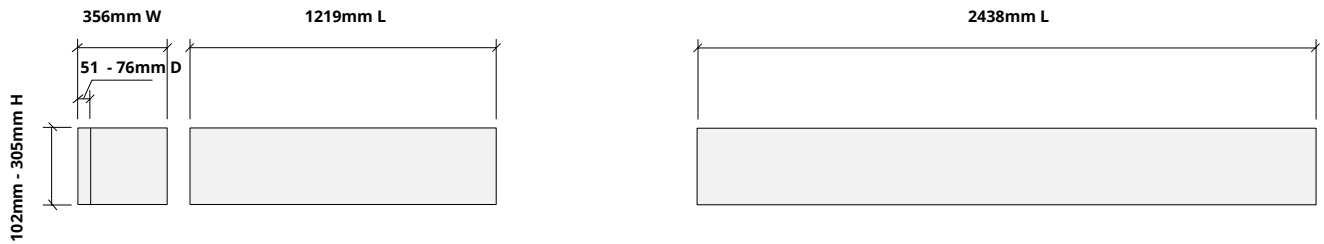


For questions or additional product information,
visit acoufelt.com.au or call 1800 626 462

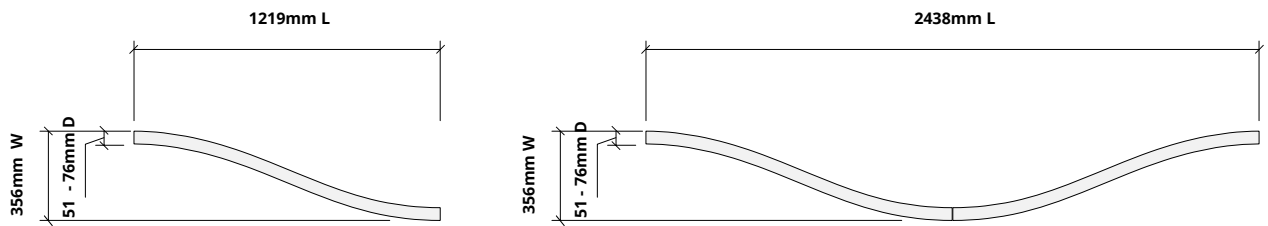
Sizes

Standard Sizes Height: 102mm up to 305mm H (1" increments)
 Width: 356mm W
 Depth: 51, 76mm D
 Length: 1219, 2438mm L

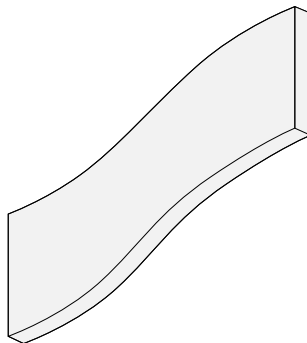
Elevation



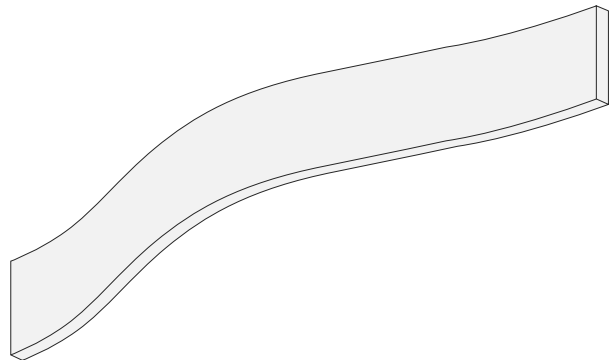
Plan



Perspective

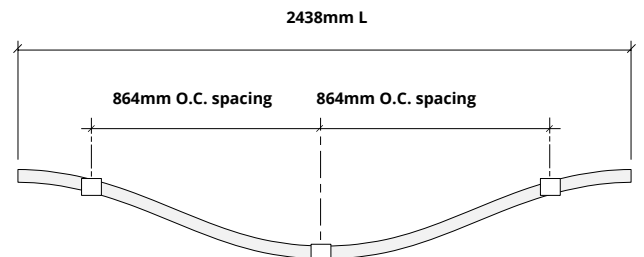
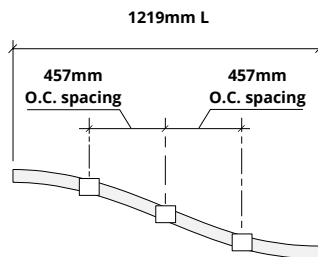
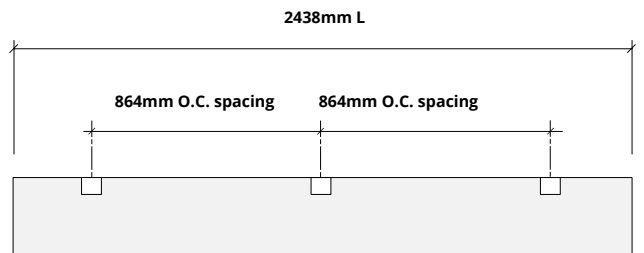
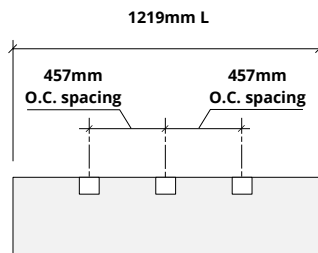


Perspective



Hardware Spacing

1219mm L	457mm on center spacing
2438mm L	864mm on center spacing



**The number of connection locations may vary depending on mounting methods.*

How to Specify

1. Choose Height

2. Choose Length

3. Choose Colorways

Select desired height.



1. Choose Height

2. Choose Length

3. Choose Colorways

Billow baffles come in the standard lengths of: 305, 457, 610, 762, 914, 1067, 1219, 1372, 1524, 1676, 1829, 1981, 2134, 2286, 2438, 2591, 2743, 2794mm L. Custom sizes are available.

1. Choose Height

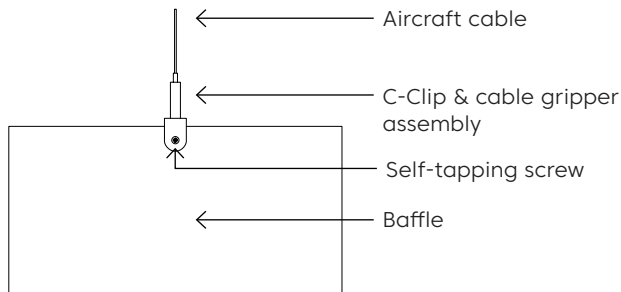
2. Choose Length

3. Choose Colorways

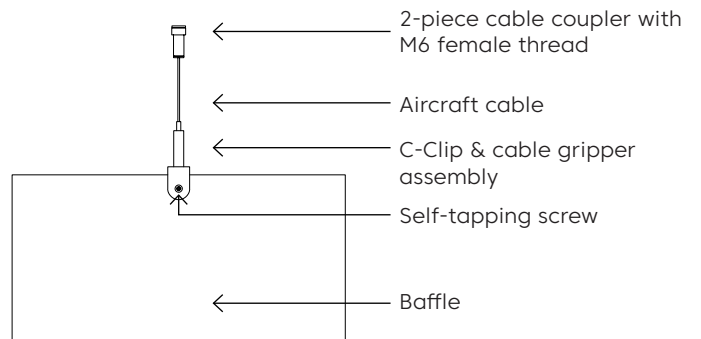
See colorway choices on page 3.

Mounting Methods

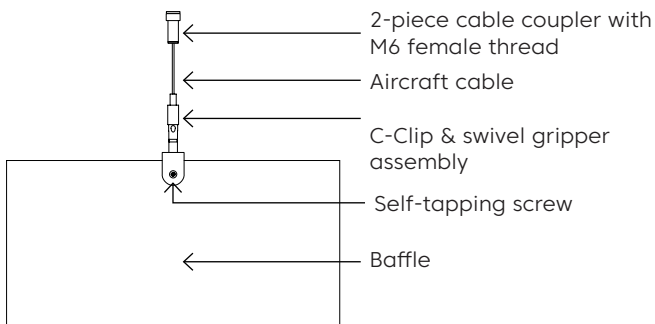
Cable



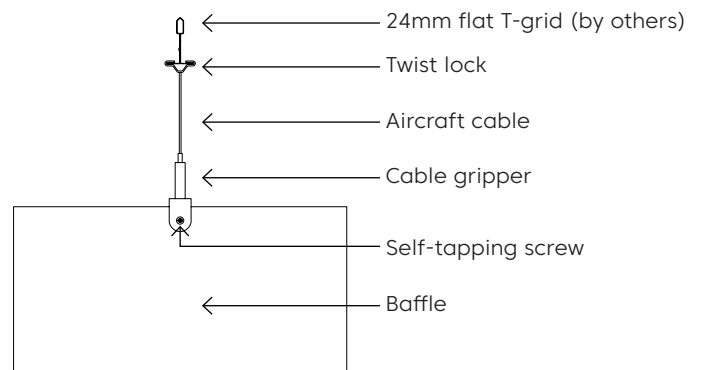
Cable to deck



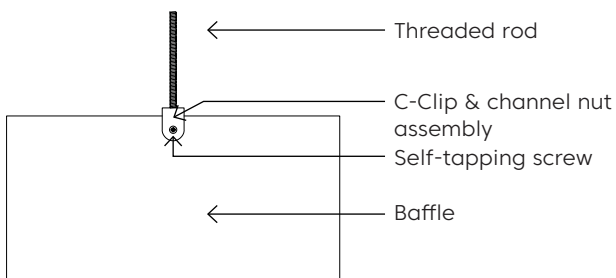
Swivel cable to deck



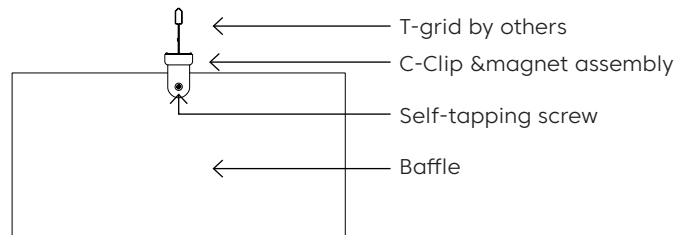
Cable to T-grid



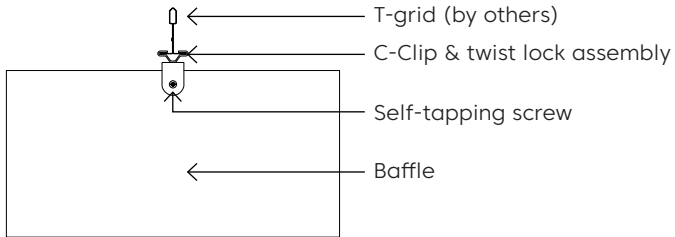
Threaded Rod



Magnet to T-grid

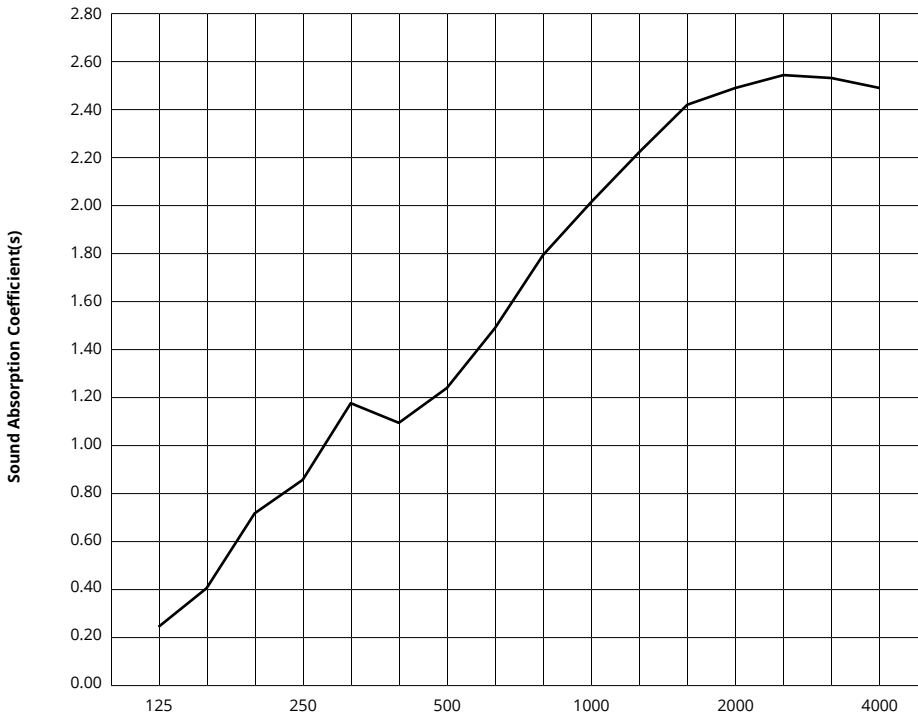


Twist lock to T-grid



Acoustic Performance

Test Method	ASTM E795-16
Install Method	J-600
Rating Method	ASTM C423-17
Mounting Method	Sample tested 5 baffles 2794mmL x 305mm D x 76mm T, hanging 600mm from floor and 152mm from each other
Test Results	NRC 1.65 SAA 1.68




Frequency f (Hz)	125	250	500	1000	2000	4000	NRC
12mm	0.26	0.86	1.25	2.02	2.49	2.49	1.65

What is a Noise Reduction Coefficient (NRC)?

You'll find the NRC rating in the specifications of all of our products. This acronym stands for Noise Reduction Coefficient, and is expressed as a single number, a rating that describes the degree to which acoustic products can absorb sound.

You can use NRC values to understand the overall performance of our acoustic wall and ceiling products. The higher the NRC, the better the product is at soaking up the sound.

Performance Indices: Noise Reduction Coefficient (NRC) results represent the absorption coefficients measured at the one third octave bands at 125, 250, 500, 1000, 2000 and 4000 Hz rounded to the nearest 0.05. Acoustic testing has been performed according to the methods mentioned above. Customization of installation of the product could alter the results. Sound Absorption Average (SAA) indicates the absorption coefficient average for the twelve one-third octave bands ranging between 200 and 2500 Hz.

 For questions or additional product information, visit acoufelt.com.au or call 1800 626 462

Billow Ceiling Baffles | May 2026