



## Blox, Shallow Ceiling Clouds

Premier Collection

Pacify problematic sound by beautifully boxing up the racket. A shallow insert allows more visible color on an almost closed box. Blox ceiling clouds offer a fresh take on noise reduction, inviting you to customize your space with Premier colors from subtle to bold shades, realistic WoodGrain patterns, or a combination inside and out. Get creative by blending cloud sizes and adding lighting to create more visual interest.

## Specifications

<b>Surface</b>	Ceiling
<b>Material</b>	FilaSorb™ polyester felt
<b>Weight</b>	2400gsm
<b>Standard Sizes</b>	Width: 508, 1220mm W Length: 1220mm L Height: 508mm H



Box, Shallow Ceiling Cloud in Multi-colored

## Technical

<b>NRC Rating</b>	Pending product testing
<b>Fire Test</b>	AS ISO 9705:2033 (according to AS 5637.7:2015 requirements) Group 1 0.93
<b>Water Sorption</b>	ASTM C1104-2019 (A Modified) Water sorbed by weight: 0.20% (based on a 12mm thick panel)
<b>Colorfastness</b>	ISO 105-B02, 6-7

## Details

<b>Lead Time</b>	Refer to Product Lead Time Matrix
<b>Origin</b>	Australia
<b>Warranty</b>	Product: 20 years* Colorfastness: 20 years*

\* Conditions apply

## Environmental

<b>Recycled Content</b>	Minimum 60%
<b>Energy</b>	Generated using 40% solar energy
<b>Indoor Air Quality</b>	VOC less than/equal to 0.5mg/m3
<b>Recyclable</b>	100%*
<b>Certifications</b>	Declare Certification - LBC Red List Free (third-party verified) SCS Global Indoor Advantage Gold

\* PET is recyclable through participating partners.



For questions or additional product information,  
visit [acoufelt.com.au](http://acoufelt.com.au) or call 1800 626 462

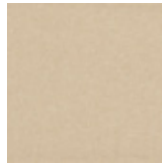
Blox, Shallow Ceiling Clouds | April 2026



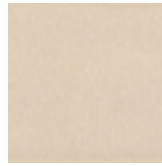
White  
WH12



Milkyway  
MI74



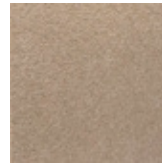
Ivory  
IV11



Pearl  
PE21



Valentine  
VA70



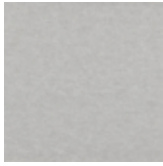
Quartz  
QU67



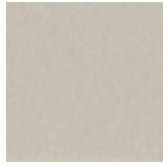
Stonewash  
ST72



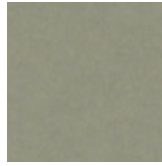
Sea Salt  
SE57



Platinum  
PL04



Almond  
AL55



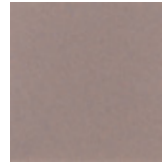
Pistachio  
PI25



Turmeric  
TU60



Flamingo  
FL61



Amethyst  
AM69



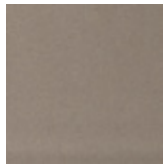
Periwinkle  
PE23



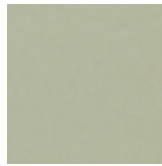
Peacock  
PE20



Metal  
ME03



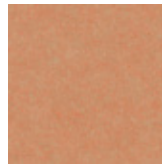
Mushroom  
MU75



Celery  
CE65



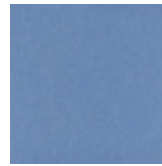
Wheat  
WH68



Peach  
PE19



Lilac  
LI13



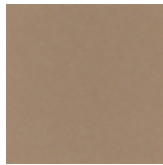
Marine  
MA15



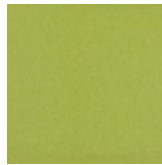
Sencha  
SE58



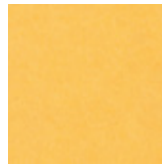
Grey  
GR02



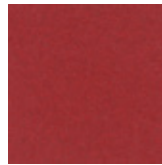
Umber  
UM54



Wasabi  
WA29



Popcorn  
PO26



Currant  
CU59



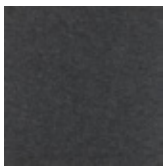
Berry  
BE06



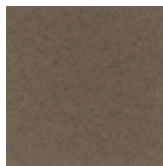
Azure  
AZ05



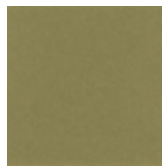
Oregano  
OR18



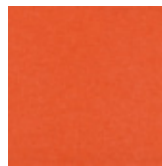
Charcoal  
CH01



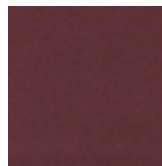
Walnut  
WA56



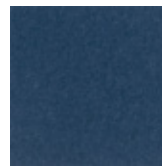
Eucalyptus  
EU71



Carrot  
CA08



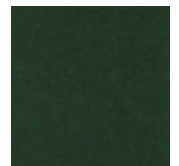
Loganberry  
LO77



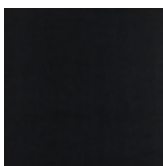
Granite  
GR62



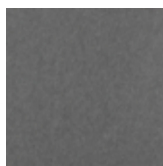
Denim  
DE09



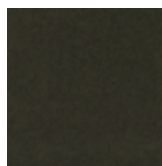
Kale  
KA12



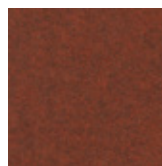
Piano Black  
PI24



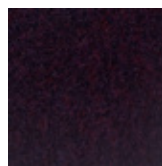
Slate  
SL27



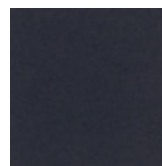
Nori  
NO76



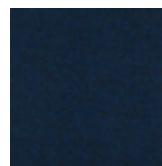
Peppercorn  
PE22



Shiraz  
SH63



Flint  
FL64



Midnight  
MI16



For questions or additional product information,  
visit [acoufelt.com.au](http://acoufelt.com.au) or call 1800 626 462

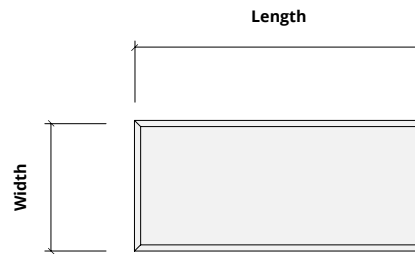
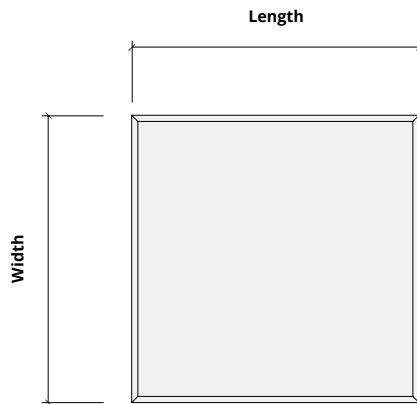
# Sizes

**Standard Width:** 508, 1220mm W

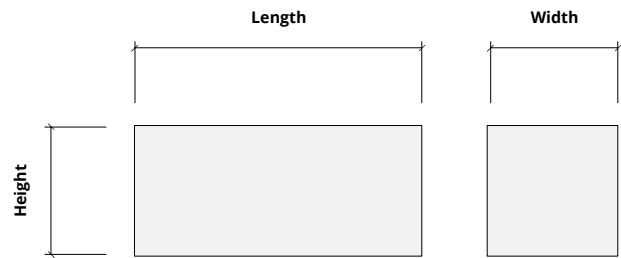
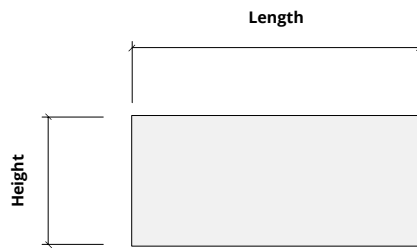
**Standard Height:** 1220mm H

**Standard Length:** 508mm D

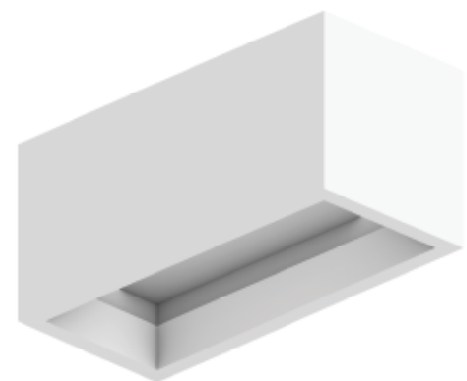
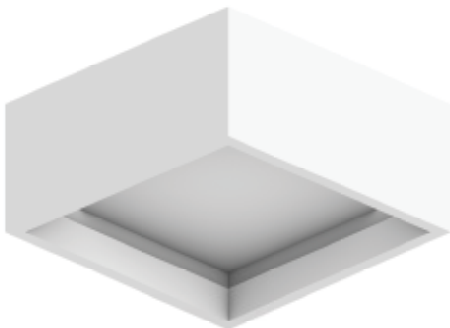
## Plan



## Elevations

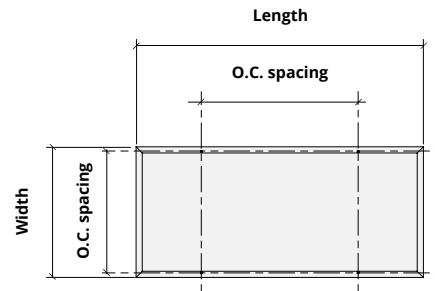
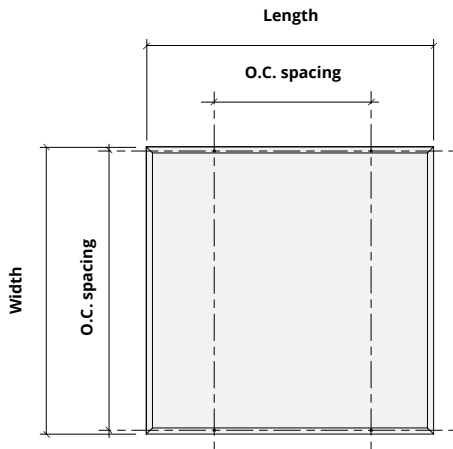


## Perspective



# Hardware Spacing

1220mm W	1066mm on centre spacing
1220mm L	610mm on centre spacing
508mm W	470mm on centre spacing



## How to Specify

1. Choose Sizes

2. Choose Colorways

3. Optional Lighting

Blox sizes and shapes can be mixed to create desired design. See Blox, Angled and Deep specification sheets for additional information.

1. Choose Sizes

2. Choose Colorways

3. Optional Lighting

Select one or multiple colorways to achieve the overall desired design. See colorway choices on page 3.

1. Choose Sizes

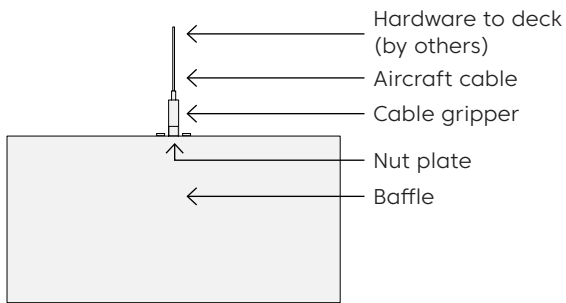
2. Choose Colorways

3. Optional Lighting

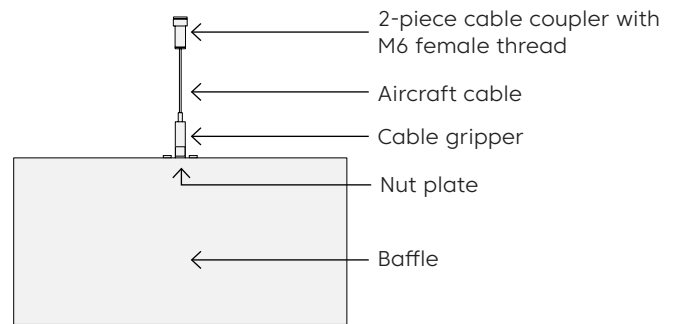
Select lighting if desired. See enclosed lighting information sheets for additional information.

# Mounting Methods

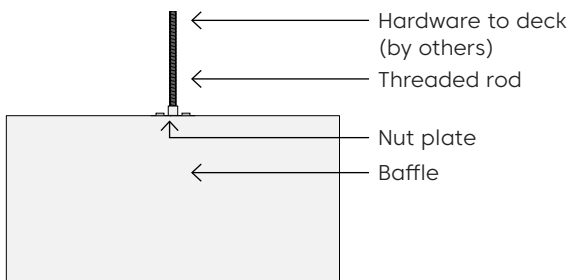
## Cable



## Cable to deck

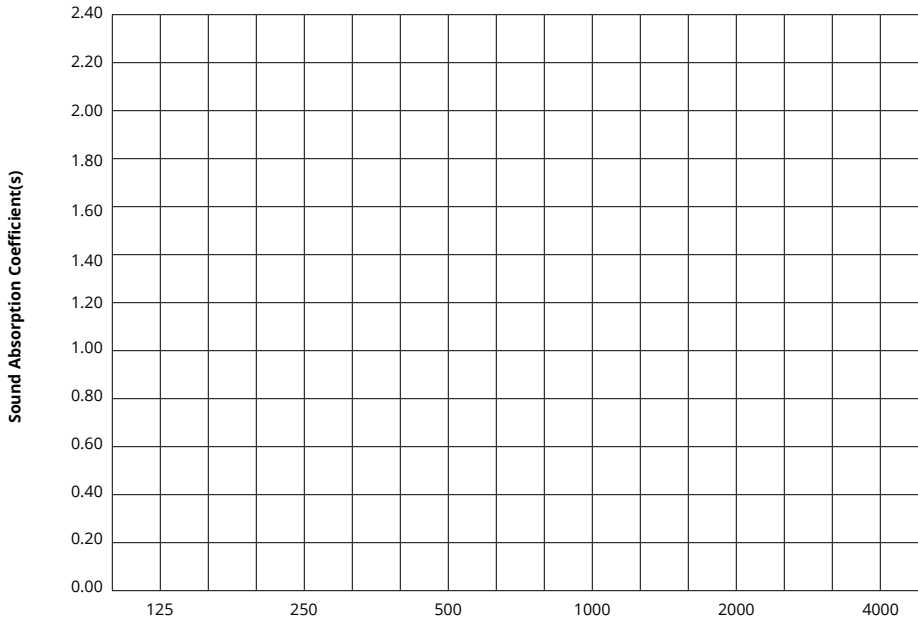


## Threaded rod



# Acoustic Performance

<b>Test Method</b>	ASTM E795-16
<b>Install Method</b>	J-600
<b>Rating Method</b>	ASTM C423-17
<b>Mounting Method</b>	Pending product testing
<b>Test Results</b>	Pending product testing




Frequency f (Hz)	125	250	500	1000	2000	4000	NRC
12mm	Pending product testing						

## What is a Noise Reduction Coefficient (NRC)?

You'll find the NRC rating in the specifications of all of our products. This acronym stands for Noise Reduction Coefficient, and is expressed as a single number, a rating that describes the degree to which acoustic products can absorb sound.

You can use NRC values to understand the overall performance of our acoustic wall and ceiling products. The higher the NRC, the better the product is at soaking up the sound.

*Performance Indices: Noise Reduction Coefficient (NRC) results represent the absorption coefficients measured at the one third octave bands at 125, 250, 500, 1000, 2000 and 4000 Hz rounded to the nearest 0.05. Acoustic testing has been performed according to the methods mentioned above. Customization of installation of the product could alter the results. Sound Absorption Average (SAA) indicates the absorption coefficient average for the twelve one-third octave bands ranging between 200 and 2500 Hz.*

 For questions or additional product information, visit [acoufelt.com.au](https://www.acoufelt.com.au) or call **1800 626 462**

**Blox, Shallow Ceiling Clouds** | April 2026