

acouflor
making quiet

Borough QuietBack™ Carpet Tiles

Specifications

Application	Floor
Backing	Felt polyester
Pile content	Solution dyed nylon
Style	Multi-level textured loop pile
Recycled content	Backing made from >90% recycled PET
Dimensions	250 x 1000mm
Thickness	8mm +/- 10%
Tiles per box	20
Classification	Commercial Extra Heavy Duty*

*conditions apply

Guarantees

Wear warranty	20 years*
Castor chair proof	20 years*
Anti-static	Lifetime*
Colorfastness warranty	20 years*

*conditions apply

Shipping



QuickShip

QuickShip products can be despatched within **24 hours**.

Technical Data

Fire test method	AS/ISO 9239.1-2003
Critical heat flux	Mean result 4.9kW/m²
Smoke deviation rate	Mean result 187%.min
Dimensional stability	-0.05%
Electrostatic propensity	<0.3000 kv
Thermal resistance	0.2m²K/W
Total VOC test method	SCS-EC10.3-2014 v4.0 meeting standard CDPH/EHLB Standard Method v.1.2-2017
Total VOC result	≤ 0.5mg/m³ or less
Colorfastness test method	ISO 105-B02
Rating	6-7
Mildew and Odour	HN 0028-2004 Determination of Mildew Growth and Odour on Trim Material. Rating = satisfactory
Antimicrobial effectiveness	AATTCC Method 174:2016 Part II Rating = <100

Sustainability



Backing made from 90% min. recycled PET



Red List Free Declare Label

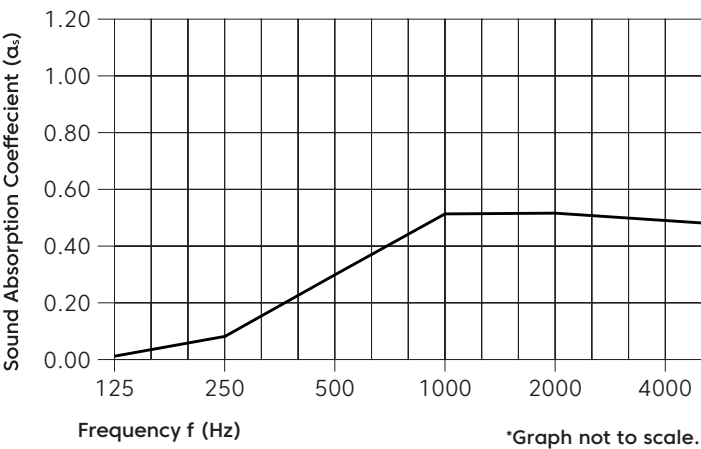


Environmental Product Declaration in accordance with ISO 14025 and EN 15804. ACCS, Environmental Certification Scheme Level 4 Compliant



Acoustic Performance

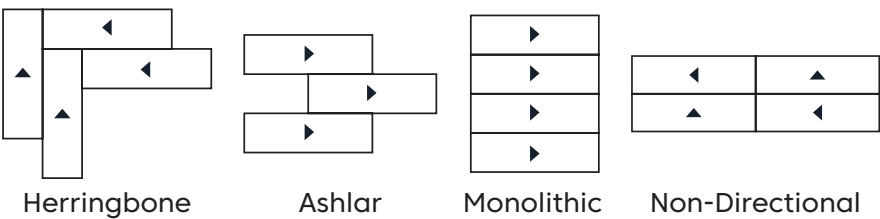
Test method	ASTM C423-09a: Standard Test Method for Sound Absorption and Sound Absorption Coefficients by the Reverberation Room Method
Rating method	AS ISO 11654 -2002: Acoustics - Rating of sound absorption - Material and systems
Test results	NRC 0.35 SAA 0.35



Frequency (Hz)	125	250	500	1000	2000	4000	NRC
α _s	0.01	0.07	0.31	0.51	0.51	0.50	0.35

Performance Indices: **Noise Reduction Coefficient (NRC)** results represent the absorption coefficients measured at the one third octaves bands at 125, 250, 500, 1000, 2000 and 4000 Hz rounded to the nearest 0.05. Acoustic testing has been performed according to the methods mentioned above. Customisation of installation of the product could alter the results. **Sound Absorption Average (SAA)** indicates the absorption coefficient average for the twelve one-third octave bands ranging between 200 and 2500 Hz

Configurations



Colorways



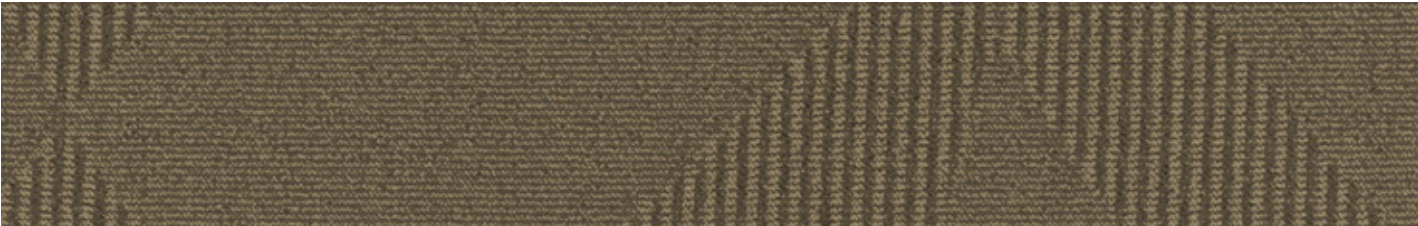
Emilia
BO10



Maison
BO08



Margaux
BO07



Gabriela
BO11



Casino
BO06

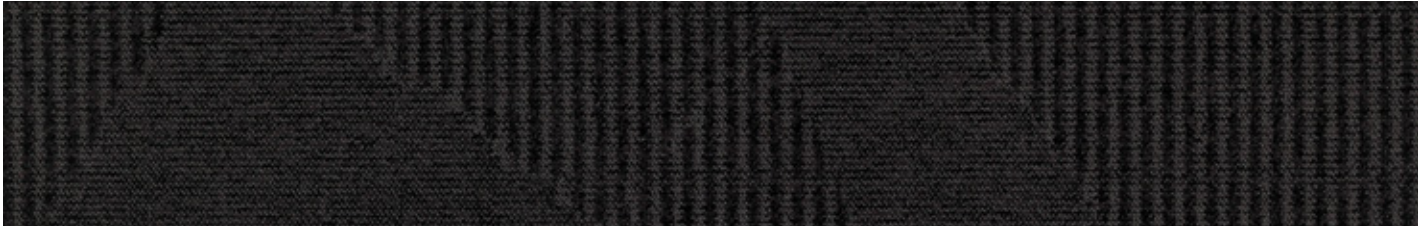


Windsor
BO09

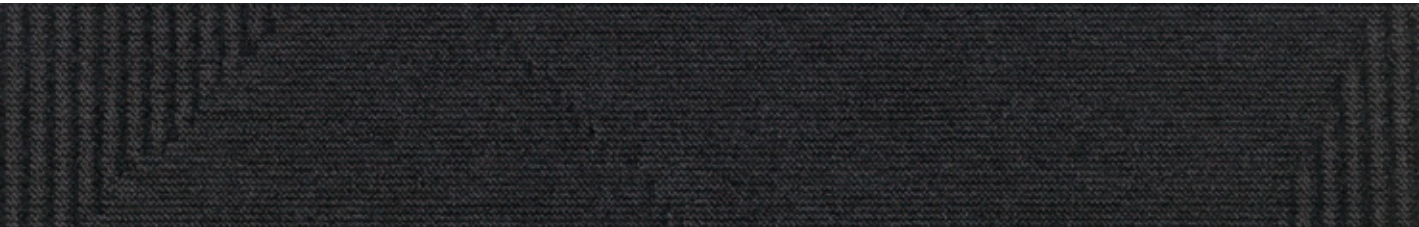
Colorways



Garnier
BO05



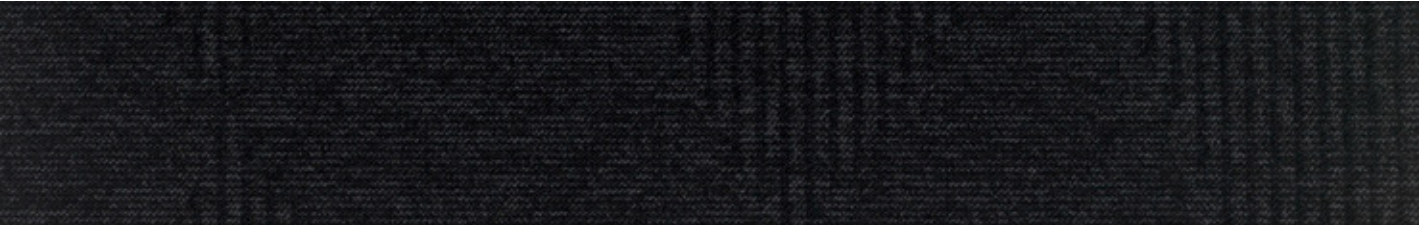
Madeleine
BO01



Grevin
BO02



Cadet
BO04



Moreau
BO03