



# Borough

QuietBack™ Carpet Tiles

acoufelt  
making quiet

## Product Detail

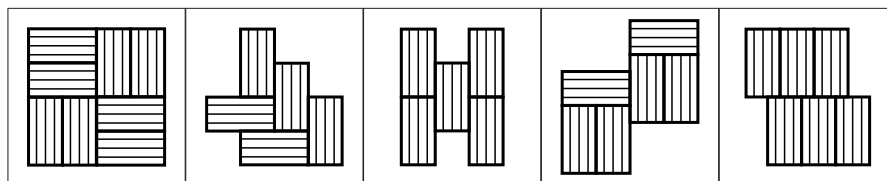
<b>Application</b>	Floor
<b>Composition</b>	QuietBack™
<b>Material</b>	100% solution dyed nylon
<b>Style</b>	Multi-level textured loop pile
<b>Recycled content</b>	Backing made from >80% recycled PET
<b>Tile dimensions</b>	250 x 1000mm
<b>Thickness</b>	8mm +/- 10%
<b>Tiles per box</b>	20

## Guarantees

<b>Wear warranty</b>	20 years*
<b>Castor chair proof</b>	20 years*
<b>Anti-static</b>	Lifetime*
<b>Colorfast</b>	20 years*
<b>Classification</b>	Commercial Extra Heavy Duty

\*conditions apply

## Installation Method








Quarter Turn   Herringbone   Vertical   Plank Half-Lap   Horizontal Brick

## Technical Data

<b>Dimensional stability</b>	ISO 17984, -0.05%
<b>Electrostatic propensity</b>	AATCC 134, < 0.70 kW
<b>Color fastness</b>	ISO 105-B02, 6-7
<b>Thermal resistance</b>	0.2m <sup>2</sup> K/W
<b>Fire test method</b>	AS/ISO 9239.1-2003
<b>Critical heat flux</b>	Mean result 4.9kW/m <sup>2</sup>
<b>Smoke deviation rate</b>	Mean result 187%.min
<b>Fire test method</b>	ASTM E648
<b>Classification</b>	Class 1
<b>Critical heat flux</b>	Average, 0.54kWm <sup>2</sup>
<b>Smoke density test method</b>	ASTM E662 (Flaming)
<b>Smoke density test rate</b>	450 or less
<b>Fire test method</b>	EN ISO 9239
<b>Critical heat flux</b>	Cfl
<b>Smoke deviation rate</b>	s1
<b>Antimicrobial effectiveness</b>	AATTCC Method 174:2016 Part II, <100

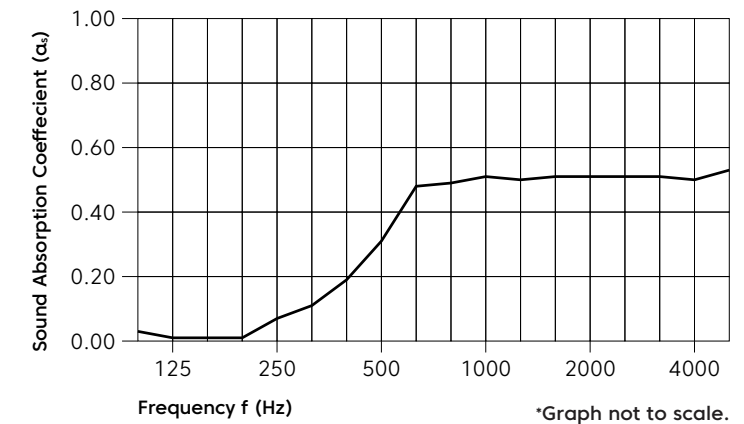
## Sustainability

-  Backing made from 80% min. recycled content
-  Red List Free Declare Label (3<sup>rd</sup> Party Verified)
-  Generated using 40% solar energy
-  Phenol & formaldehyde free
-  Total VOC's less than 0.5 mg/m<sup>3</sup> (3<sup>rd</sup> Party Verified)



## Acoustic Performance

<b>Test method</b>	ASTM C423
<b>Results</b>	NRC 0.35



Frequency (Hz)	125	250	500	1000	2000	4000	NRC
α <sub>s</sub>	0.01	0.07	0.31	0.51	0.51	0.50	0.35

# Colorways

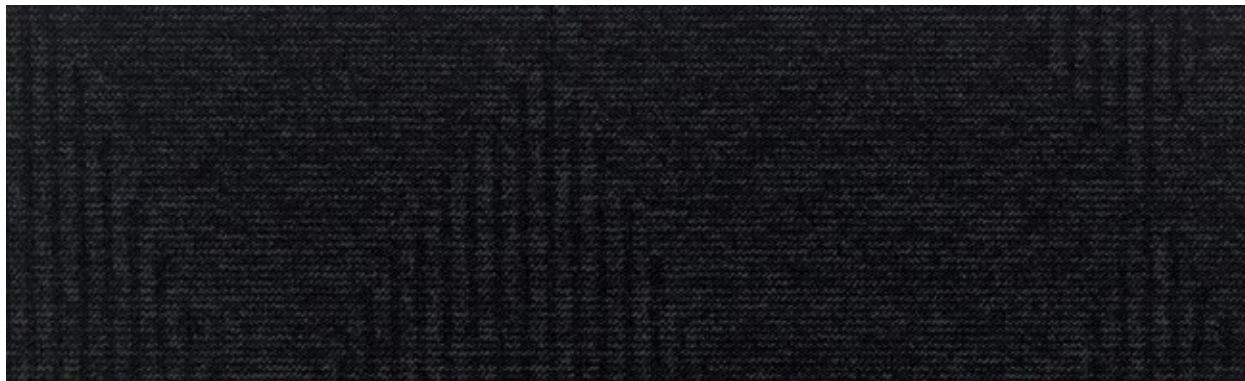
Light Reflectance Values (LRV), are a measure of the percentage of visible and usable light that is reflected from a surface when illuminated by a light source.



Madeleine  
LRV - 7.49%



Grevin  
LRV - 5.85%



Moreau  
LRV - 2.48%



Cadet  
LRV - 2.91%



Garnier  
LRV - 4.94%



Casino  
LRV - 10.07%