

Canopy

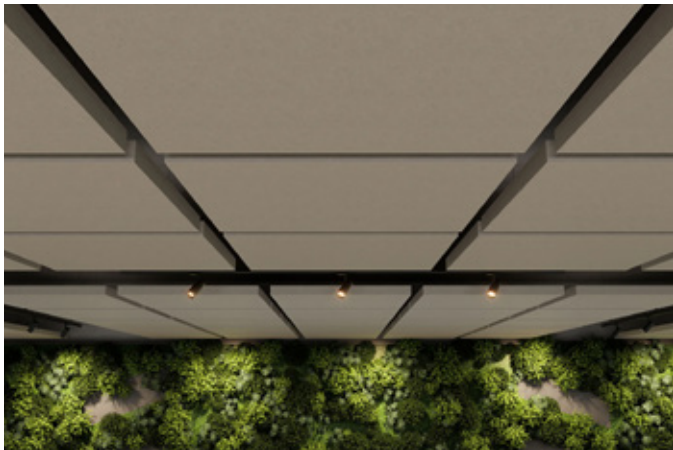
Ceiling Clouds

Premier Collection

Canopy is a minimalistic ceiling cloud that transforms spaces with high ceilings into more intimate environments. Each rectangular cloud has a 2-inch perimeter raised edge that distinguishes it from flat, one-dimensional clouds. The raised edge adds volume to the design, creating a more visually appealing and acoustically valuable solution.

Specifications

Surface	Ceiling
Material	FilaSorb™ polyester felt
Weight	2400gsm
Standard Sizes	508mm W x 1118mm L x 51mm H 508mm W x 2438mm L x 51mm H 1118mm W x 1118mm L x 51mm H 1118mm W x 2438mm L x 51mm H



Canopy Ceiling Cloud in Almond

Technical

NRC Rating	0.85, 200mm air gap* 0.80, 400mm air gap*
Fire Test	Test Results Pending
Water Sorption	ASTM C1104-2019 (A Modified) Water sorbed by weight: 0.20% (based on a 12mm thick panel)
Colorfastness	ISO 105-B02, 6-7

* Test results available upon request.

Details

Lead Time	Refer to Product Lead Time Matrix
Origin	Australia
Warranty	Product: 20 years* Colorfastness: 20 years*

* Conditions apply

Environmental

Recycled Content	Minimum 60%
Energy	Generated using 40% solar energy
Indoor Air Quality	VOC less than/equal to 0.5mg/m3
Recyclable	100%*
Certifications	Declare Certification - LBC Red List Free (third-party verified) SCS Global Indoor Advantage Gold

* PET is recyclable through participating partners.

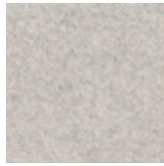


For questions or additional product information,
visit acoufelt.com.au or call 1800 626 462

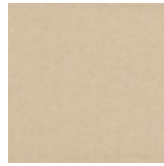
Canopy Ceiling Clouds | April 2026



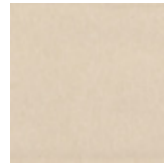
White
WH12



Milkyway
MI74



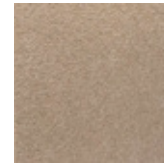
Ivory
IV11



Pearl
PE21



Valentine
VA70



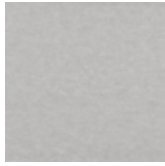
Quartz
QU67



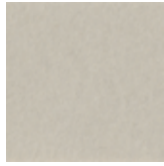
Stonewash
ST72



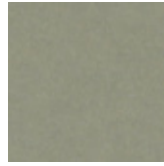
Sea Salt
SE57



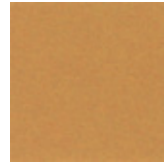
Platinum
PL04



Almond
AL55



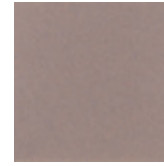
Pistachio
PI25



Turmeric
TU60



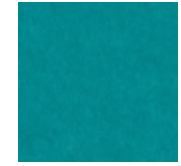
Flamingo
FL61



Amethyst
AM69



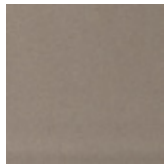
Periwinkle
PE23



Peacock
PE20



Metal
ME03



Mushroom
MU75



Celery
CE65



Wheat
WH68



Peach
PE19



Lilac
LI13



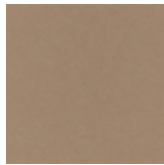
Marine
MA15



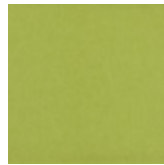
Sencha
SE58



Grey
GR02



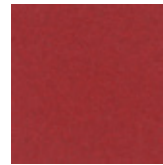
Umber
UM54



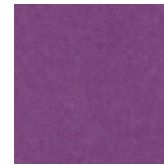
Wasabi
WA29



Popcorn
PO26



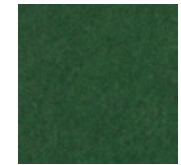
Currant
CU59



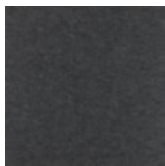
Berry
BE06



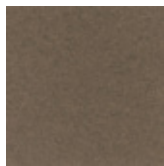
Azure
AZ05



Oregano
OR18



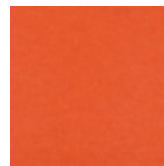
Charcoal
CH01



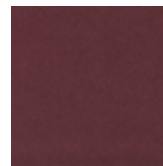
Walnut
WA56



Eucalyptus
EU71



Carrot
CA08



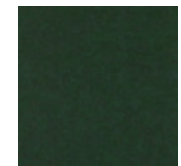
Loganberry
LO77



Granite
GR62



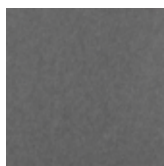
Denim
DE09



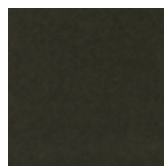
Kale
KA12



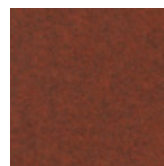
Piano Black
PI24



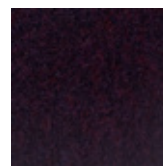
Slate
SL27



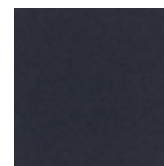
Nori
NO76



Peppercorn
PE22



Shiraz
SH63



Flint
FL64



Midnight
MI16

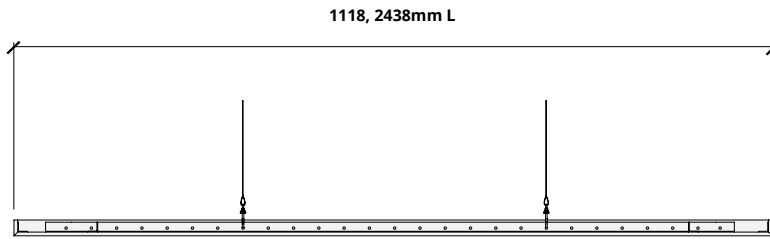


For questions or additional product information,
visit acoufelt.com.au or call 1800 626 462

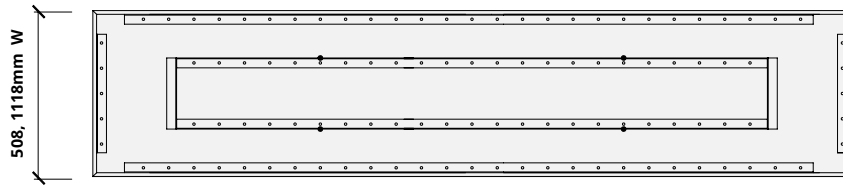
Sizes

- Standard Sizes**
- 508mm W x 1118mm L x 51mm H
 - 508mm W x 2438mm L x 51mm H
 - 1118mm W x 1118mm L x 51mm H
 - 1118mm W x 2438mm L x 51mm H

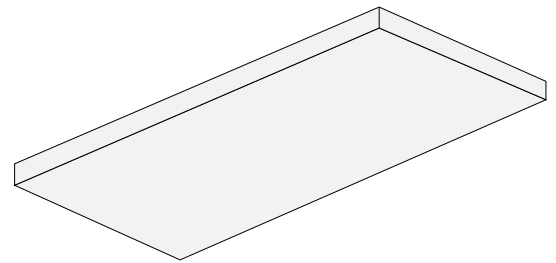
Elevation



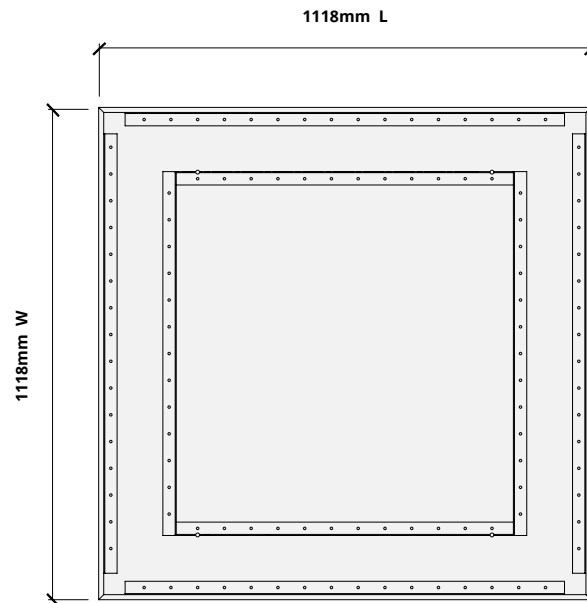
Plan



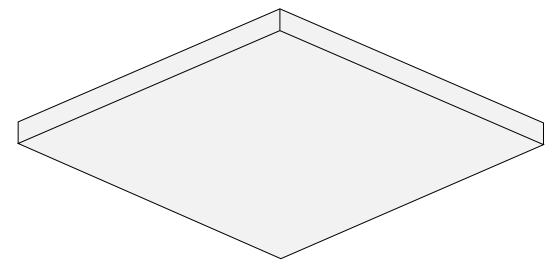
Perspective



Plan

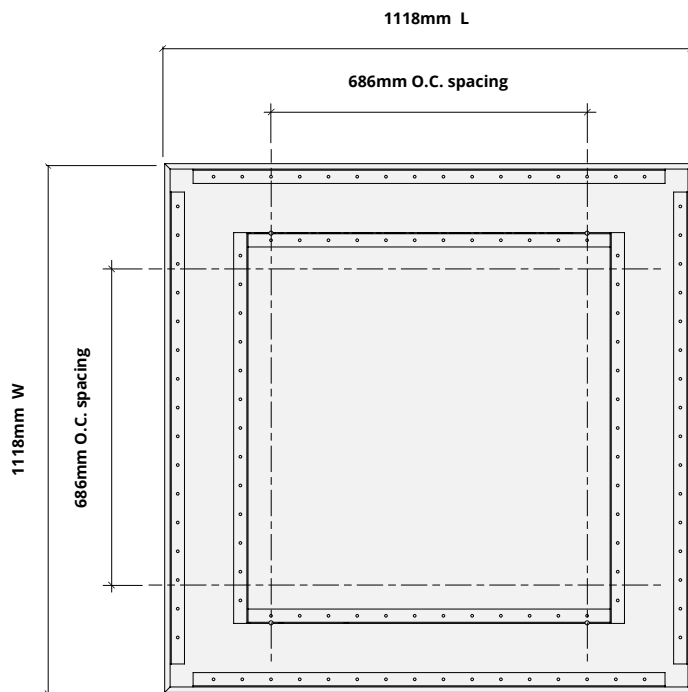
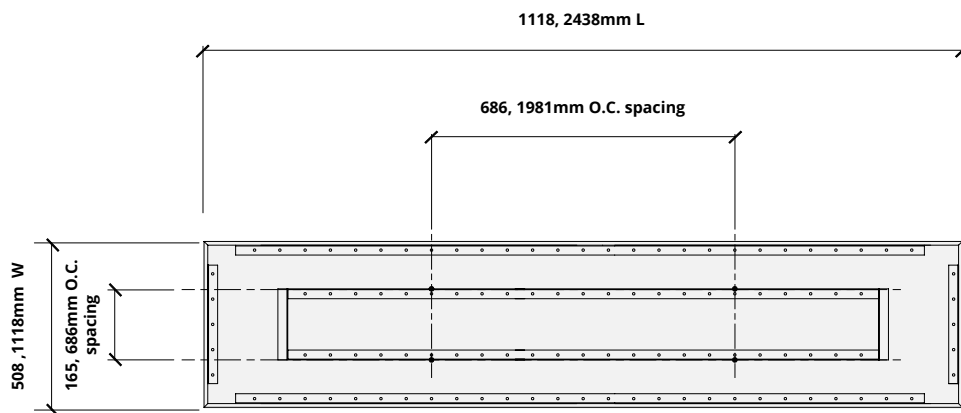


Perspective



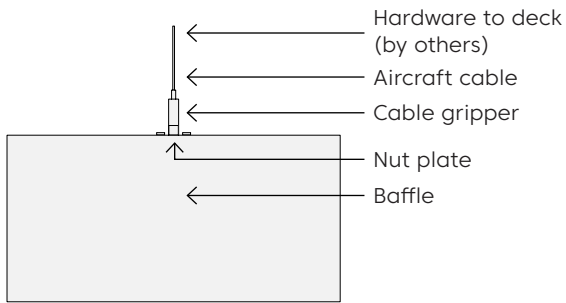
Hardware Spacing

508mm W	165mm on center spacing
1118mm W	686mm on center spacing
1118mm L	686mm on center spacing
2438mm L	1981mm on center spacing

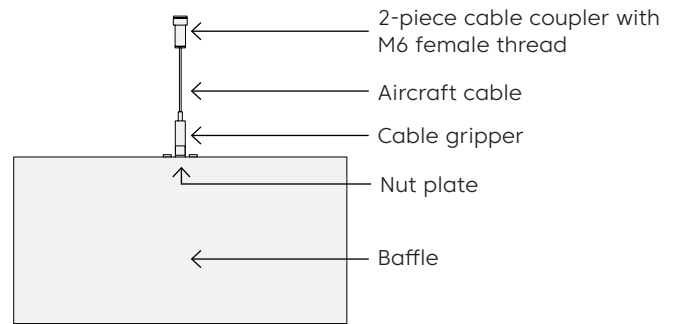


Mounting Methods

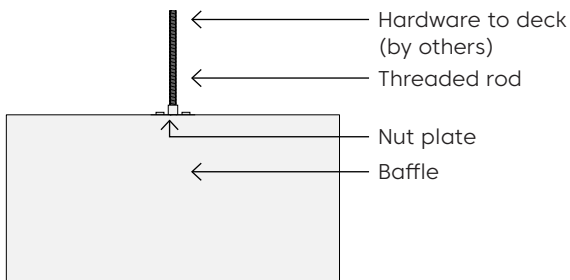
Cable



Cable to deck

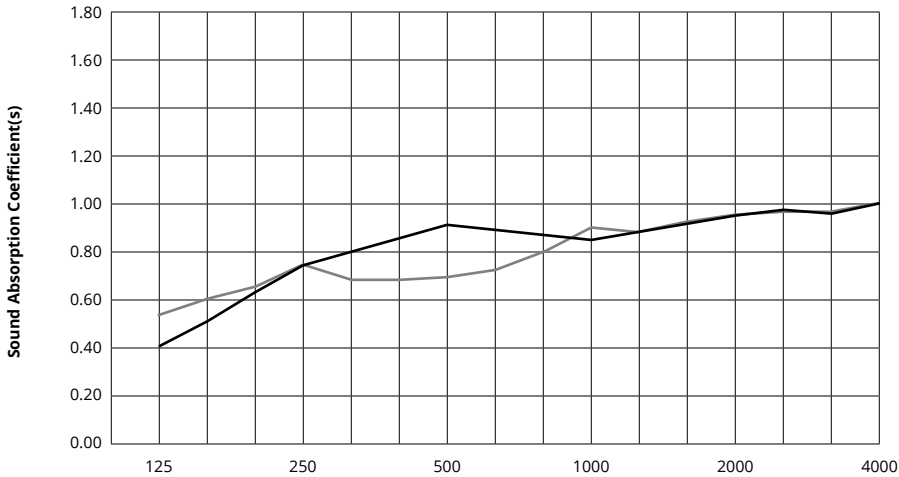


Threaded rod



Acoustic Performance

Test Method	ISO 11654-2002
Install Method	E200, E400
Rating Method	ASTM C423-09a
Test Results	NRC 0.85, 200mm air gap SAA 0.86, 200mm air gap NRC 0.80, 400mm air gap SAA 0.83, 400mm air gap




	Frequency f (Hz)	125	250	500	1000	2000	4000	NRC
	12mm, 200mm air gap	0.40	0.75	0.90	0.85	0.95	1.00	0.85
	12mm, 400mm air gap	0.55	0.75	0.70	0.90	0.95	1.00	0.80

What is a Noise Reduction Coefficient (NRC)?

You'll find the NRC rating in the specifications of all of our products. This acronym stands for Noise Reduction Coefficient, and is expressed as a single number, a rating that describes the degree to which acoustic products can absorb sound.

You can use NRC values to understand the overall performance of our acoustic wall and ceiling products. The higher the NRC, the better the product is at soaking up the sound.

Performance Indices: Noise Reduction Coefficient (NRC) results represent the absorption coefficients measured at the one third octave bands at 125, 250, 500, 1000, 2000 and 4000 Hz rounded to the nearest 0.05. Acoustic testing has been performed according to the methods mentioned above. Customization of installation of the product could alter the results. Sound Absorption Average (SAA) indicates the absorption coefficient average for the twelve one-third octave bands ranging between 200 and 2500 Hz.

 For questions or additional product information, visit acoufelt.com.au or call **1800 626 462**

Canopy Ceiling Clouds | April 2026