

## Curve Ceiling Baffles

Premier Collection

Curve Ceiling Baffles offer a whimsical yet unfailing solution to soundscaping any space, large or small. Easy to install, they also add interest to a bare ceiling, helping to improve echo and reverberation within the room.

## Specifications

<b>Surface</b>	Ceiling
<b>Material</b>	FilaSorb™ polyester felt
<b>Weight</b>	2400gsm 4800gsm
<b>Standard Sizes</b>	Height ranges from end-to-end (2:1) Height A: 102 up to 610 mm (51 mm increments) Height B: 51 up to 305 mm (25 mm increments) Lengths: Range from 305 mm up to 2794 mm <i>See page 4 for more details. Custom sizes available</i>



Curve Ceiling Baffles in Pistachio

## Technical

<b>NRC Rating</b>	<b>12mm*</b> 1.30 <b>24mm*</b> 1.15
<b>Fire Tests</b>	AS ISO 9705:2033 (according to AS 5637.7:2015 requirements) Group 1 0.93
<b>Water Sorption</b>	ASTM C1104-2019 (A Modified) Water sorbed by weight: 0.20% (based on a 12mm thick panel)
<b>Colorfastness</b>	ISO 105-B02, 6-7

\* Test results available upon request.

## Details

<b>Lead Time</b>	Refer to Product Lead Time Matrix
<b>Origin</b>	Australia
<b>Warranty</b>	Product: 20 years* Colorfastness: 20 years*

\* Conditions apply

## Environmental

<b>Recycled Content</b>	Minimum 60%
<b>Energy</b>	Generated using 40% solar energy
<b>Indoor Air Quality</b>	VOC less than/equal to 0.5mg/m3
<b>Recyclable</b>	100%*
<b>Certifications</b>	Environmental Product Declaration Declare Certification - LBC Red List Free (third-party verified) SCS Global Indoor Advantage Gold

\* PET is recyclable through participating partners.

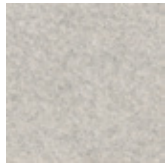


For questions or additional product information,  
visit [acoufelt.com.au](http://acoufelt.com.au) or call 1800 626 462

Curve Ceiling Baffles | May 2026



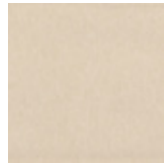
White  
WH12



Milkyway  
MI74



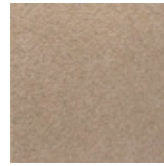
Ivory  
IV11



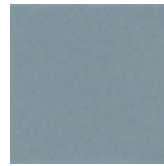
Pearl  
PE21



Valentine  
VA70



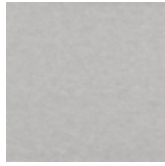
Quartz  
QU67



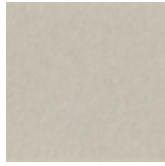
Stonewash  
ST72



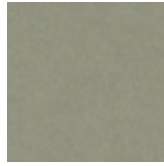
Sea Salt  
SE57



Platinum  
PL04



Almond  
AL55



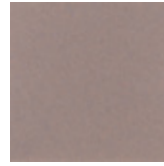
Pistachio  
PI25



Turmeric  
TU60



Flamingo  
FL61



Amethyst  
AM69



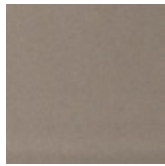
Periwinkle  
PE23



Peacock  
PE20



Metal  
ME03



Mushroom  
MU75



Celery  
CE65



Wheat  
WH68



Peach  
PE19



Lilac  
LI13



Marine  
MA15



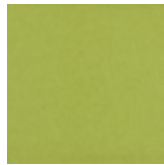
Sencha  
SE58



Grey  
GR02



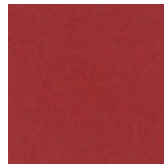
Umber  
UM54



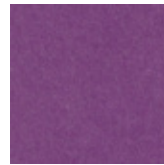
Wasabi  
WA29



Popcorn  
PO26



Currant  
CU59



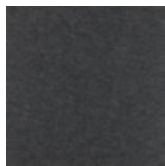
Berry  
BE06



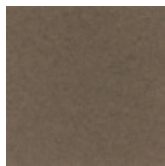
Azure  
AZ05



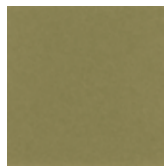
Oregano  
OR18



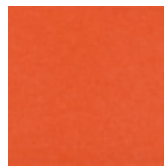
Charcoal  
CH01



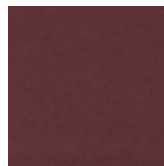
Walnut  
WA56



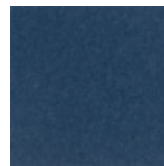
Eucalyptus  
EU71



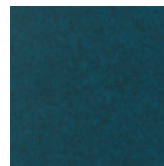
Carrot  
CA08



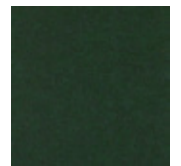
Loganberry  
LO77



Granite  
GR62



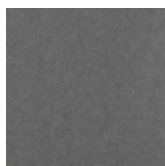
Denim  
DE09



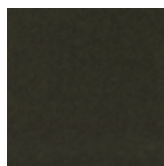
Kale  
KA12



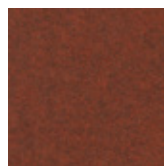
Piano Black  
PI24



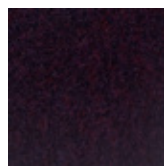
Slate  
SL27



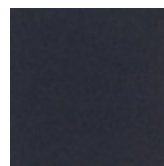
Nori  
NO76



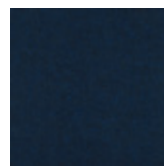
Peppercorn  
PE22



Shiraz  
SH63



Flint  
FL64



Midnight  
MI16



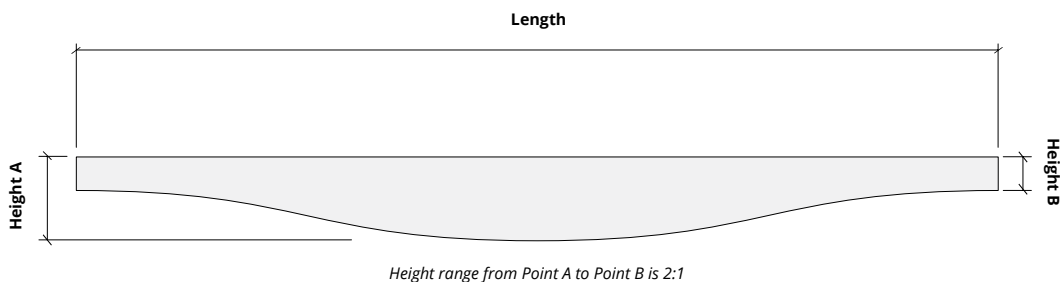
For questions or additional product information,  
visit [acoufelt.com.au](http://acoufelt.com.au) or call 1800 626 462

# Sizes

**Standard Heights** *Height ranges from end-to-end (2:1)*  
 Height A: 102 up to 610 mm (51 mm increments)  
 Height B: 51 up to 305 mm (25 mm increments)  
*Custom sizes available*

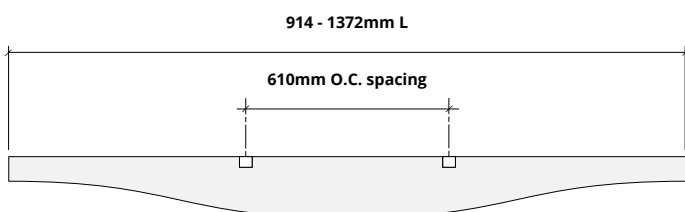
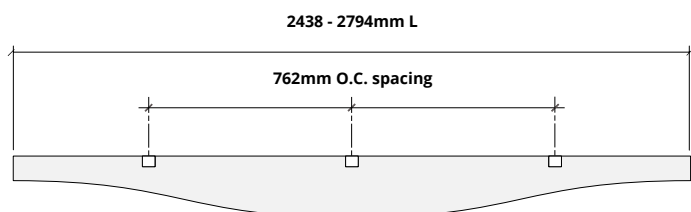
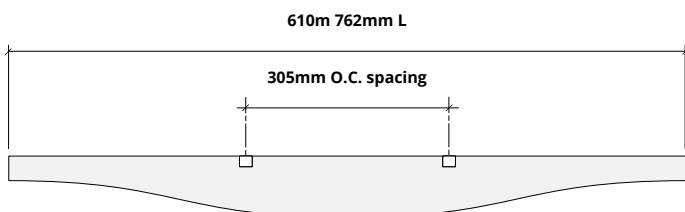
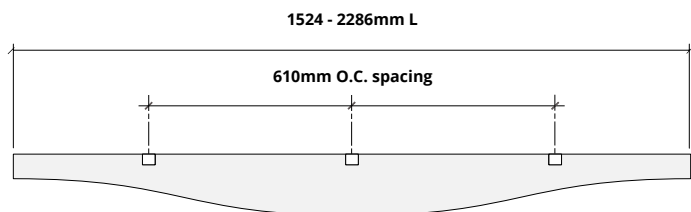
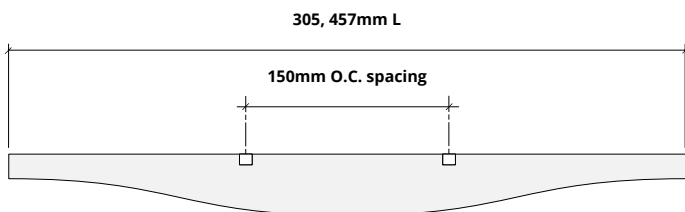
**Standard Lengths** 305, 457, 610, 762, 914, 1067, 1219, 1372, 1524  
 1676, 1829, 1981, 2134, 2286, 2438, 2591,  
 2743 2794mm L  
*Custom sizes available*

Height A	Height B
102mm	51mm
152mm	76mm
203mm	102mm
254mm	127mm
305mm	152mm
356mm	178mm
406mm	203mm
457mm	229mm
508mm	254mm
559mm	279mm
610mm	305mm



# Hardware Spacing

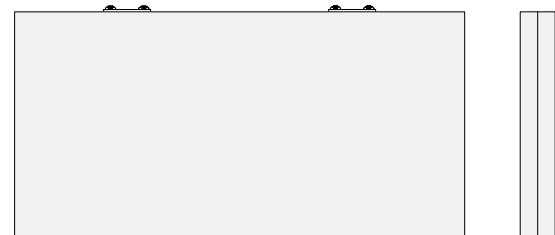
<b>305, 457mm L</b>	150mm on center spacing
<b>610, 762mm L</b>	305mm on center spacing
<b>914 - 1372mm L</b>	610mm on center spacing
<b>1524 - 2286mm L</b>	610mm on center spacing
<b>2438 - 2794mm L</b>	762mm on center spacing



## 12mm Baffle with Stiffener and Nut Plate



## 24mm Baffle with Nut Plate



For questions or additional product information, visit [acoufelt.com.au](http://acoufelt.com.au) or call 1800 626 462

# How to Specify

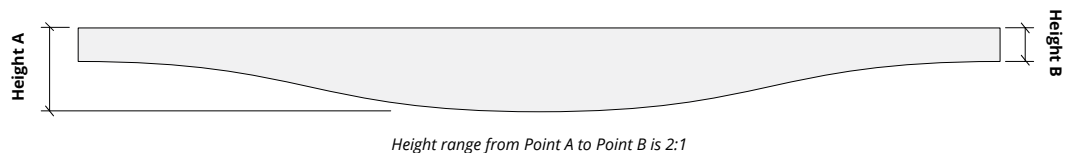
**1. Choose Height**

2. Choose Length

3. Choose Colorways

Select Height A based on desired design. See chart below for corresponding Height B.

Height A	Height B
102mm	51mm
152mm	76mm
203mm	102mm
254mm	127mm
305mm	152mm
356mm	178mm
406mm	203mm
457mm	229mm
508mm	254mm
559mm	279mm
610mm	305mm



**1. Choose Height**

**2. Choose Length**

3. Choose Colorways

Arc baffles come in the standard lengths of: 305, 457, 610, 762, 914, 1067, 1219, 17, 1524, 1676, 1829, 1981, 2114, 2286, 2438, 2591, 2743, 2794mm L. Custom sizes are available.

**1. Choose Height**

**2. Choose Length**

**3. Choose Colorways**

See colorway choices on page 3.

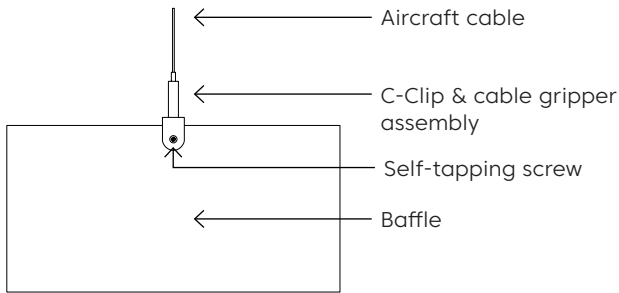


For questions or additional product information, visit [acoufelt.com.au](http://acoufelt.com.au) or call 1800 626 462

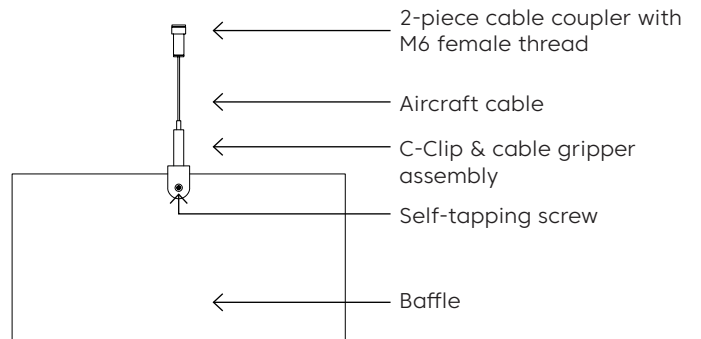
Curve Ceiling Baffles | May 2026

# Mounting Methods

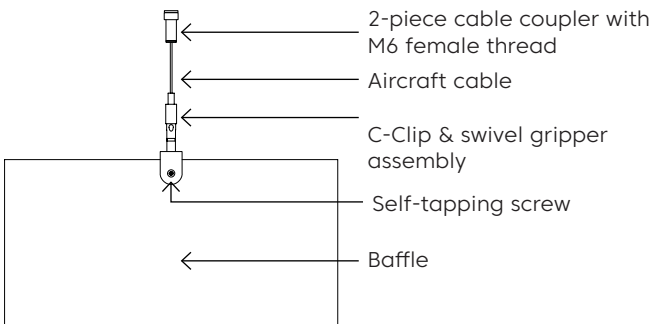
## Cable



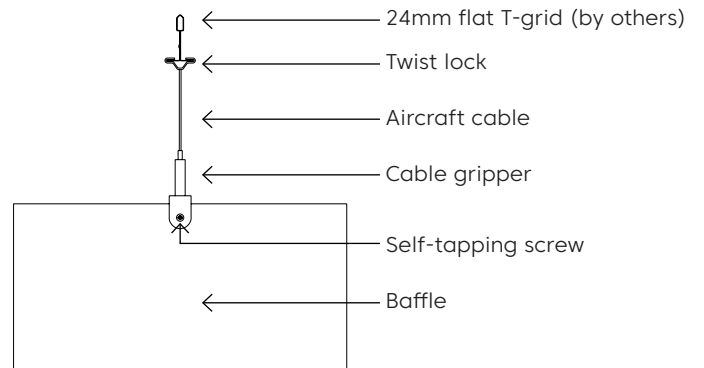
## Cable to deck



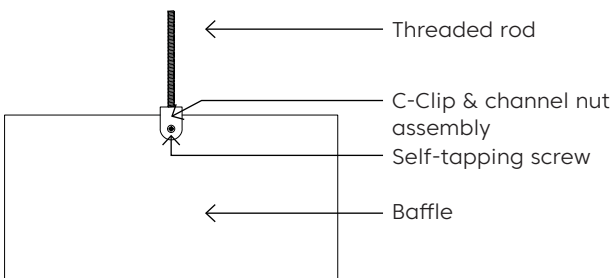
## Swivel cable to deck



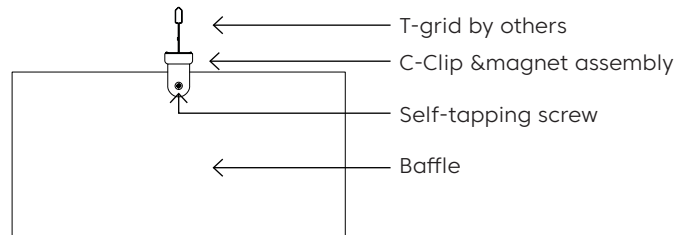
## Cable to T-grid



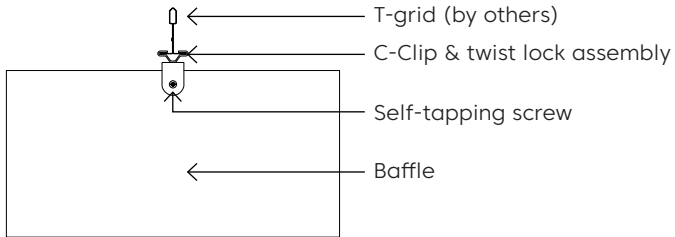
## Threaded Rod



## Magnet to T-grid

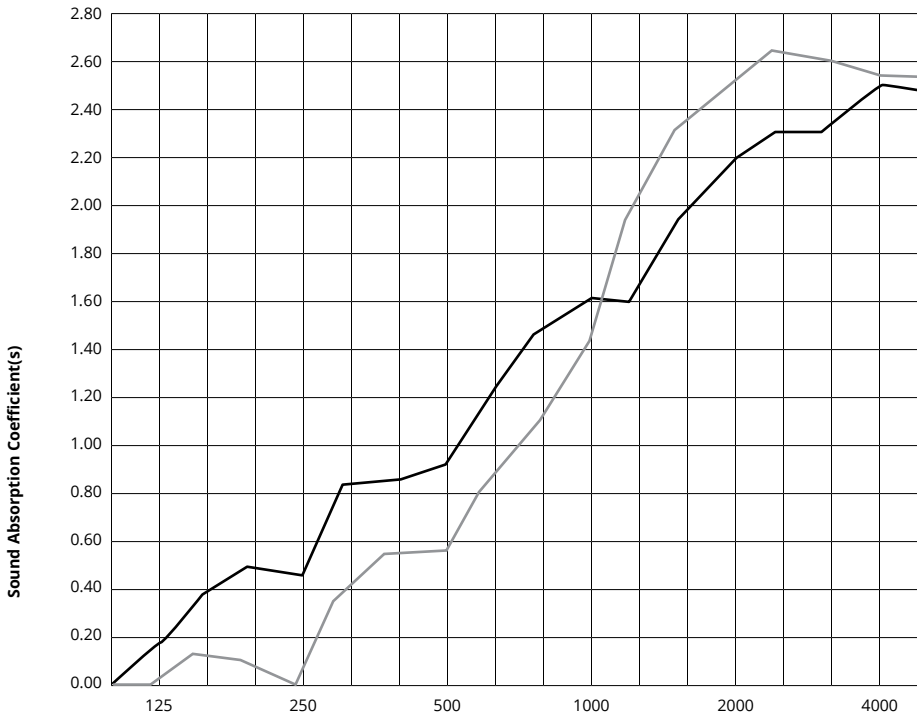


## Twist lock to T-grid



# Acoustic Performance

<b>Test Method</b>	ASTM E795-16	
<b>Install Method</b>	J-600	
<b>Rating Method</b>	ASTM C423-17	
<b>Mounting Method</b>	Sample tested 6 baffles 2794mm L x 305mm D, 12mm and 24mm thickness, sample hanging 600mm from floor and 152mm O.C. from each other	
<b>Test Results</b>	<b>12mm</b>	<b>24mm</b>
	NRC 1.30	NRC 1.15
	SAA 1.32	SAA 1.19




	Frequency f (Hz)	125	250	500	1000	2000	4000	NRC
	<b>12mm</b>	0.17	0.44	.93	1.62	2.20	2.51	<b>1.30</b>
	<b>24mm</b>	0.01	0.00	0.56	1.45	2.52	2.55	<b>1.15</b>

## What is a Noise Reduction Coefficient (NRC)?

You'll find the NRC rating in the specifications of all of our products. This acronym stands for Noise Reduction Coefficient, and is expressed as a single number, a rating that describes the degree to which acoustic products can absorb sound.

You can use NRC values to understand the overall performance of our acoustic wall and ceiling products. The higher the NRC, the better the product is at soaking up the sound.

*Performance Indices: Noise Reduction Coefficient (NRC) results represent the absorption coefficients measured at the one third octave bands at 125, 250, 500, 1000, 2000 and 4000 Hz rounded to the nearest 0.05. Acoustic testing has been performed according to the methods mentioned above. Customization of installation of the product could alter the results. Sound Absorption Average (SAA) indicates the absorption coefficient average for the twelve one-third octave bands ranging between 200 and 2500 Hz.*

 For questions or additional product information, visit [acoufelt.com.au](http://acoufelt.com.au) or call **1800 626 462**

Curve Ceiling Baffles | May 2026