



acouflor  
making quiet

# Elemental QuietBack™ Carpet Tiles

# Specifications

<b>Application</b>	Floor
<b>Backing</b>	Felt polyester
<b>Pile content</b>	Solution dyed nylon
<b>Style</b>	Multi-level textured loop pile
<b>Recycled content</b>	Backing made from >85% recycled PET
<b>Dimensions</b>	500 x 500mm
<b>Thickness</b>	8mm +/- 10%
<b>Tiles per box</b>	20
<b>Classification</b>	Commercial Extra Heavy Duty*

\*conditions apply

# Guarantees

<b>Wear warranty</b>	20 years*
<b>Castor chair proof</b>	20 years*
<b>Anti-static</b>	Lifetime*
<b>Colorfastness warranty</b>	20 years*

\*conditions apply

# Shipping



**QuickShip**

QuickShip products can be despatched within **24 hours**.

# Technical Data

<b>Fire test method</b>	AS/ISO 9239.1-2003
<b>Critical heat flux</b>	Mean result 4.9kW/m <sup>2</sup>
<b>Smoke deviation rate</b>	Mean result 187%.min
<b>Dimensional stability</b>	-0.05%
<b>Electrostatic propensity</b>	<0.3000 kv
<b>Thermal resistance</b>	0.2m <sup>2</sup> K/W
<b>Total VOC test method</b>	SCS-EC10.3-2014 v4.0 meeting standard CDPH/EHLB Standard Method v.1.2-2017
<b>Total VOC result</b>	≤ 0.5mg/m <sup>3</sup> or less
<b>Colorfastness test method</b>	ISO 105-B02
<b>Rating</b>	6-7
<b>Mildew and Odour</b>	HN 0028-2004 Determination of Mildew Growth and Odour on Trim Material. <b>Rating</b> = satisfactory
<b>Antimicrobial effectiveness</b>	AATCC Method 174:2016 Part II <b>Rating</b> = <100

# Sustainability

Backing made from 85% min. recycled PET Red List Free Declare Label

Environmental Product Declaration in accordance with ISO 14025 and EN 15804. ACCS, Environmental Certification Scheme Level 4 Compliant

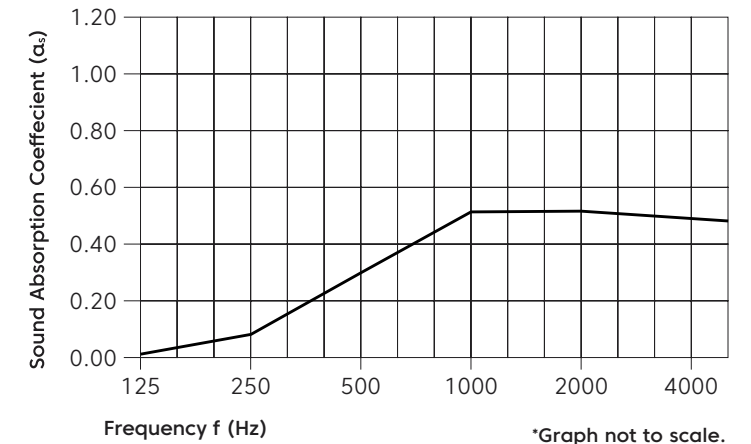


# Acoustic Performance

**Test method** ASTM C423-09a: Standard Test Method for Sound Absorption and Sound Absorption Coefficients by the Reverberation Room Method

**Rating method** AS ISO 11654 -2002: Acoustics - Rating of sound absorption - Material and systems

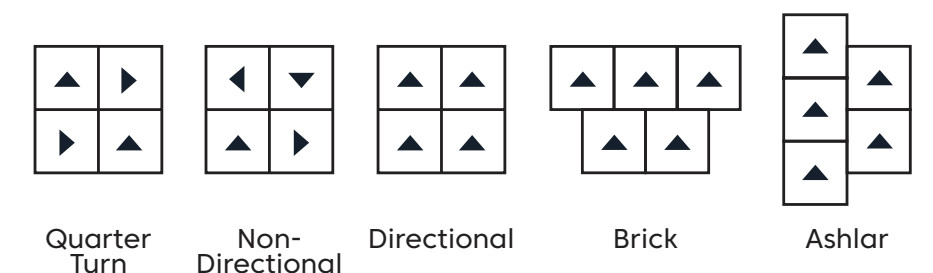
**Test results** NRC 0.35 | SAA 0.35



Frequency (Hz)	125	250	500	1000	2000	4000	NRC
αs	0.01	0.07	0.31	0.51	0.51	0.50	0.35

Performance Indices: **Noise Reduction Coefficient (NRC)** results represent the absorption coefficients measured at the one third octaves bands at 125, 250, 500, 1000, 2000 and 4000 Hz rounded to the nearest 0.05. Acoustic testing has been performed according to the methods mentioned above. Customisation of installation of the product could alter the results. **Sound Absorption Average (SAA)** indicates the absorption coefficient average for the twelve one-third octave bands ranging between 200 and 2500 Hz

# Configurations



# Colorways

---



Atlantic  
EL01



Plum  
EL07



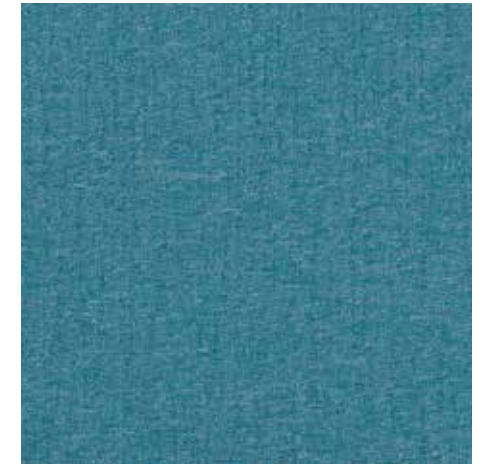
Rhubarb  
EL09



Ochre  
EL05



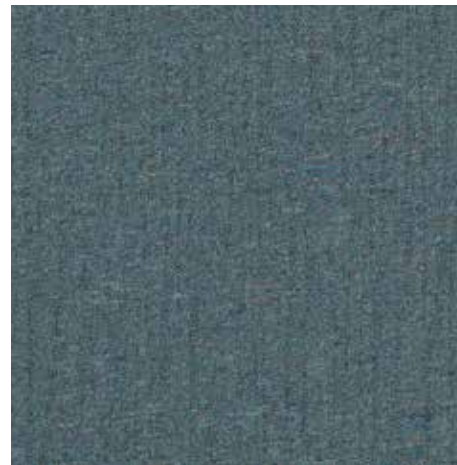
Salmon  
EL10



Sky  
EL11



Prussian Blue  
EL08



Steel  
EL12



Gravel  
EL03



Opal  
EL06



Avocado  
EL02



Jute  
EL04