



# Elemental

QuietBack™ Carpet Tiles

acoufelt  
making quiet

# Product Detail

<b>Product</b>	Elemental Carpet Tile
<b>Application</b>	Floor
<b>Composition</b>	QuietBack™
<b>Material</b>	100% solution dyed nylon
<b>Style</b>	Multi-level textured loop pile
<b>Content</b>	Backing made from >80% recycled PET
<b>Tile Dimensions</b>	500 x 500mm
<b>Thickness</b>	8mm
<b>Tiles per box</b>	20

# Guarantees

<b>Wear Warranty</b>	20 years*
<b>Castor Chair Proof</b>	20 years*
<b>Anti-Static</b>	Lifetime*
<b>Colorfast</b>	20 years*
<b>Classification</b>	Commercial Extra Heavy Duty

\*conditions apply



**QuickShip available**



# Technical Data

<b>Dimensional Stability</b>	ISO 17984, -0.05%
<b>Electrostatic Propensity</b>	AATCC 134 ≤ 1000V
<b>Light Fastness</b>	ISO 105-B02, 6-7
<b>Thermal Resistance</b>	0.2m <sup>2</sup> K/W
<b>Fire Test Method</b>	AS/ISO 9239.1-2003
<b>Critical Heat Flux</b>	Mean result 4.9kW/m <sup>2</sup>
<b>Smoke Deviation Rate</b>	Mean result 187%.min
<b>Fire Test Method</b>	ASTM E648 Class 1
<b>Critical Heat Flux</b>	Average, 0.54kWm <sup>2</sup>
<b>Smoke Density Test Method</b>	ASTM E662 (Flaming)
<b>Smoke Density Test Method</b>	450 or less
<b>Fire Test Method</b>	EN 13501-1:2019
<b>Critical Heat Flux</b>	Cfl
<b>Smoke Deviation Rate</b>	s1
<b>Antimicrobial Effectiveness</b>	AATTCC Method 174:2016 Part II

# Sustainability

- Every square meter of QuietBack™ carpet tiles diverts on average approximately 34 x 600ml PET drinking bottles from landfill
- LBC Red list free
- Phenol & formaldehyde free
- Total VOC's 0.5 mg/m
- Recognised under LEED



Backing made from 80% min. recycled content



Declare Living Building Challenge compliant



Generated using 40% solar energy



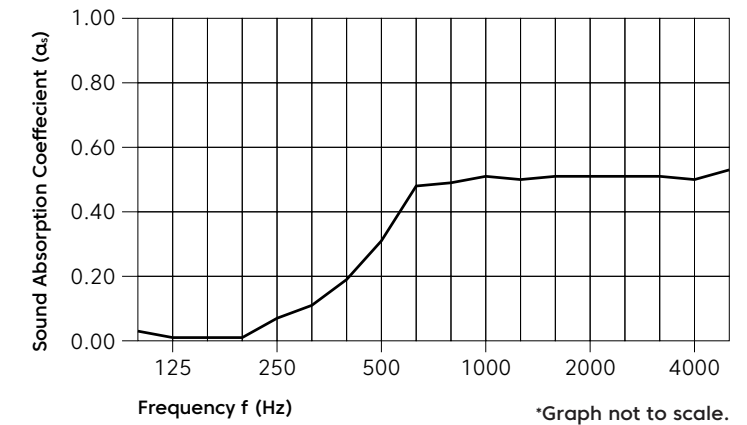
Recyclable at end-of-life



**Declare.**

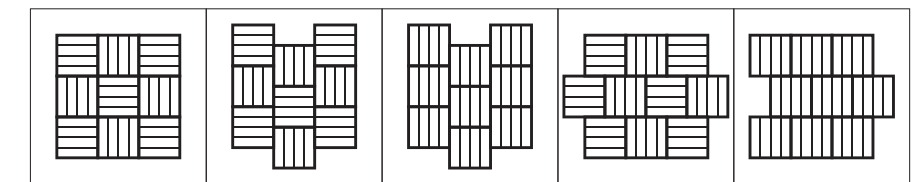
# Acoustic Performance

**Sound Absorption** ASTM C423, NRC 0.35



Frequency (Hz)	125	250	500	1000	2000	4000	NRC
α <sub>s</sub>	0.01	0.07	0.31	0.51	0.51	0.50	<b>0.35</b>

# Installation Method



Quarter Turn

Vertical Stair Step

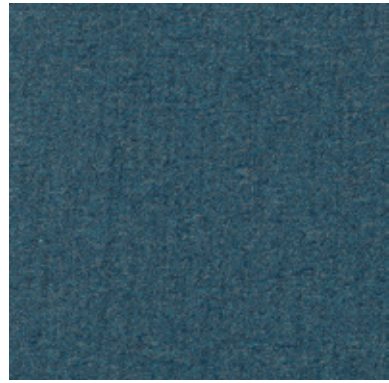
Vertical

Horizontal Stair Step

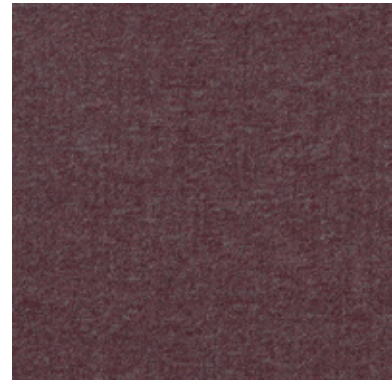
Horizontal Brick

# Colorways

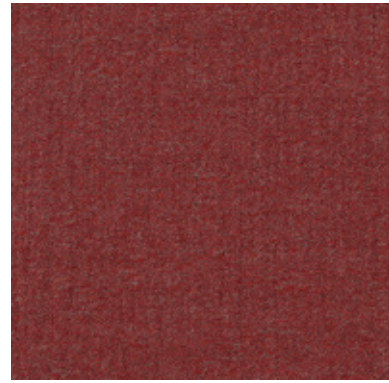
---



Atlantic



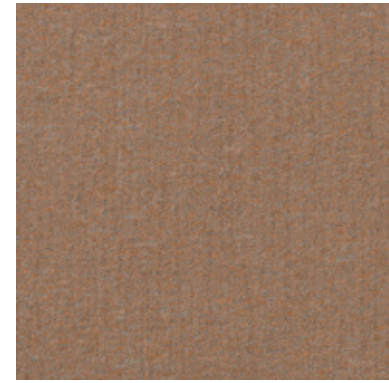
Plum



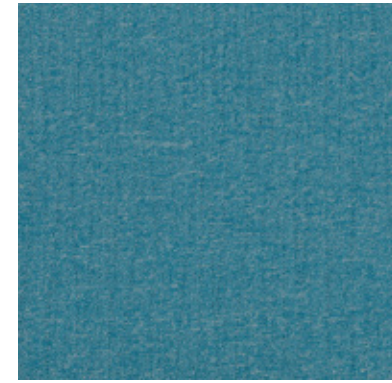
Rhubarb



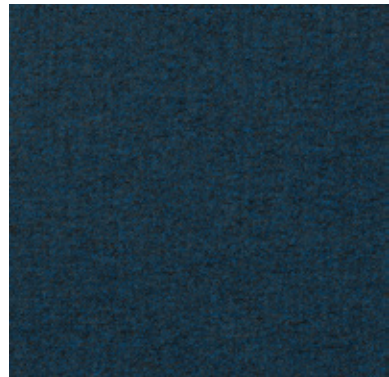
Ochre



Salmon



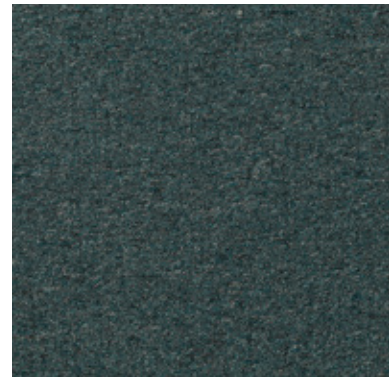
Sky



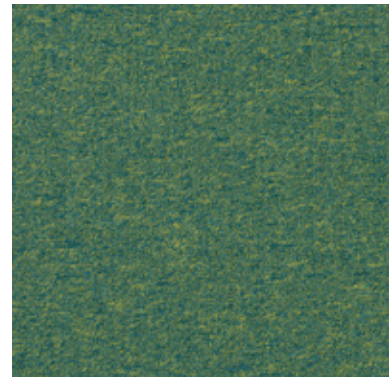
Prussian Blue



Steel



Gravel



Opal



Avocado



Jute