



Filter

Wall Panel

Premier Collection

Indulge in a sensory detox. By scrubbing unwanted sound from your environment, Filter imparts a welcome sense of stillness complemented by a whisper of visual interest. Choose from a range of sizes and solid colors to create a continuous sweep across seams and around curves—Filter attaches easily to any surface.

Specifications

Surface	Wall
Material	FilaSorb™ polyester felt
Weight	2400gsm
Standard Sizes	Width: 600mm Depth: 75mm Length: 1200 & 2800mm <i>Custom sizes available</i>



Filter Wall Panels in Slate

Technical

NRC Rating	0.45*
Fire Test	AS ISO 9705:2033 According to AS 5637.7:2015 Requirements) Group 1 0.93
Water Sorption	ASTM C1104-2019 (A Modified) Water sorbed by weight: 0.20% (based on a 12mm thick panel)
Colorfastness	ISO 105-B02, 6-7

* Test results available upon request.

Details

Lead Time	Refer to Product Lead Time Matrix
Origin	Australia
Warranty	Product: 20 years* Colorfastness: 20 years*

* Conditions apply

Environmental

Recycled Content	Minimum 60%
Energy	Generated using 40% solar energy
Indoor Air Quality	VOC less than/equal to 0.5mg/m3
Recyclable	100%*
Certifications	Declare Certification - LBC Red List Free (third-party verified) SCS Global Indoor Advantage Gold

* PET is recyclable through participating partners.

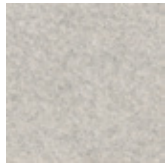


For questions or additional product information, visit [acoufelt.com.au](https://www.acoufelt.com.au) or call 1800 626 462.

Filter Wall Panels | March 2026



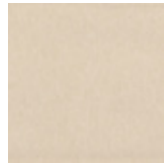
White
WH12



Milkyway
MI74



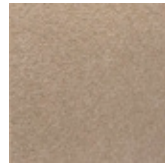
Ivory
IV11



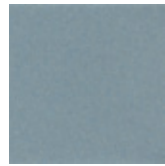
Pearl
PE21



Valentine
VA70



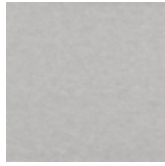
Quartz
QU67



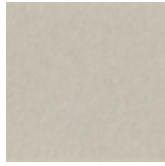
Stonewash
ST72



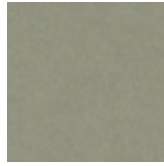
Sea Salt
SE57



Platinum
PL04



Almond
AL55



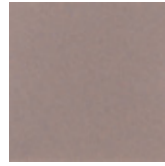
Pistachio
PI25



Turmeric
TU60



Flamingo
FL61



Amethyst
AM69



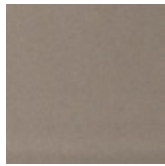
Periwinkle
PE23



Peacock
PE20



Metal
ME03



Mushroom
MU75



Celery
CE65



Wheat
WH68



Peach
PE19



Lilac
LI13



Marine
MA15



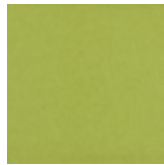
Sencha
SE58



Grey
GR02



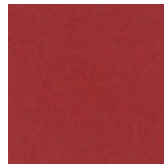
Umber
UM54



Wasabi
WA29



Popcorn
PO26



Currant
CU59



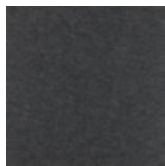
Berry
BE06



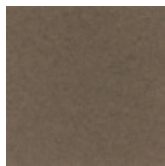
Azure
AZ05



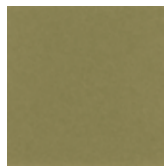
Oregano
OR18



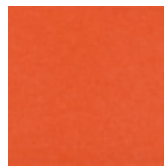
Charcoal
CH01



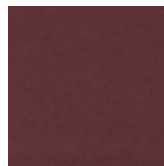
Walnut
WA56



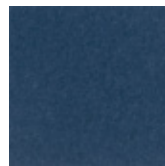
Eucalyptus
EU71



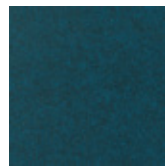
Carrot
CA08



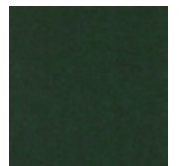
Loganberry
LO77



Granite
GR62



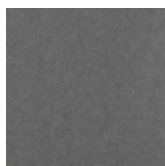
Denim
DE09



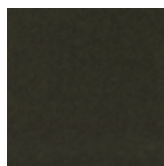
Kale
KA12



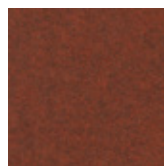
Piano Black
PI24



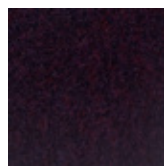
Slate
SL27



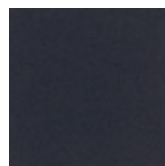
Nori
NO76



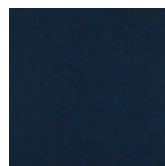
Peppercorn
PE22



Shiraz
SH63



Flint
FL64



Midnight
MI16

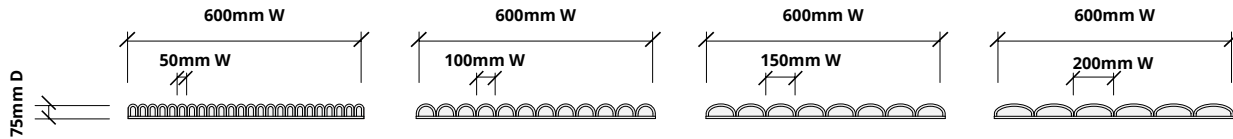


For questions or additional product information,
visit acoufelt.com.au or call 1800 626 462.

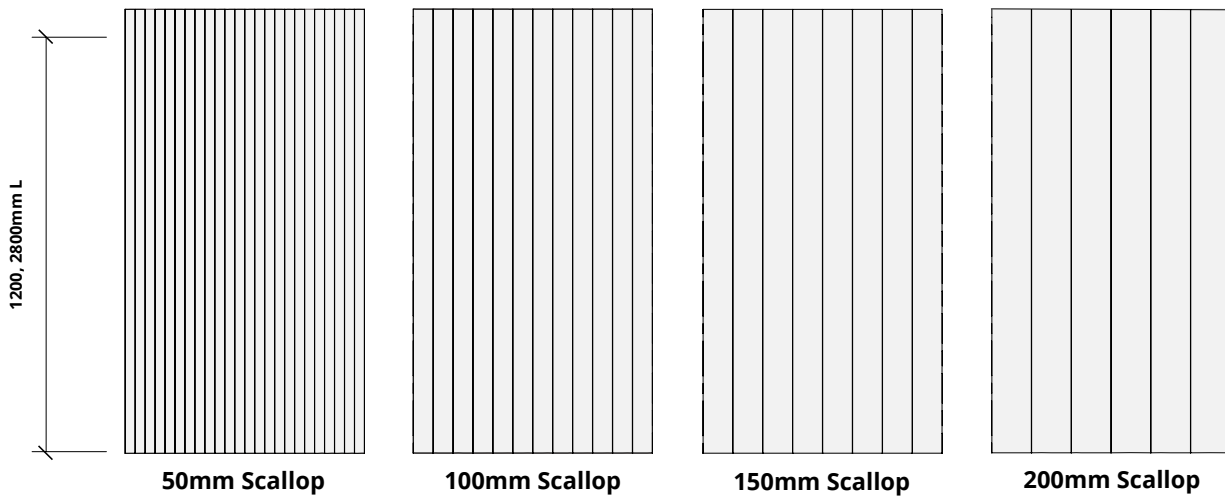
Sizes

Width	Panel width: 600mm Scallop widths: 50, 100, 150 & 200mm
Depth	75mm
Length	1200 & 2800mm <i>Custom sizes available</i>

Plan



Elevation



Side Elevation

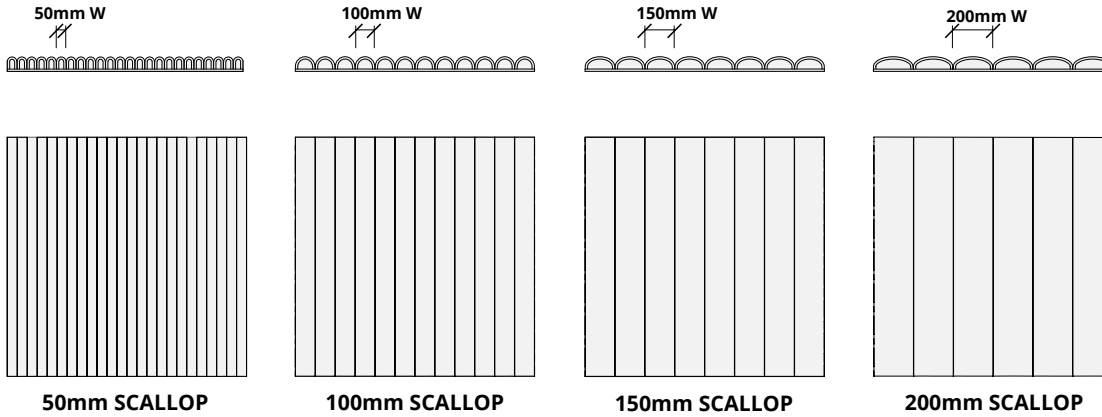


How to Specify

1. Choose Scallop Width

2. Choose Colorways

Select desired scallop width. Panels can be mixed for desired effect.



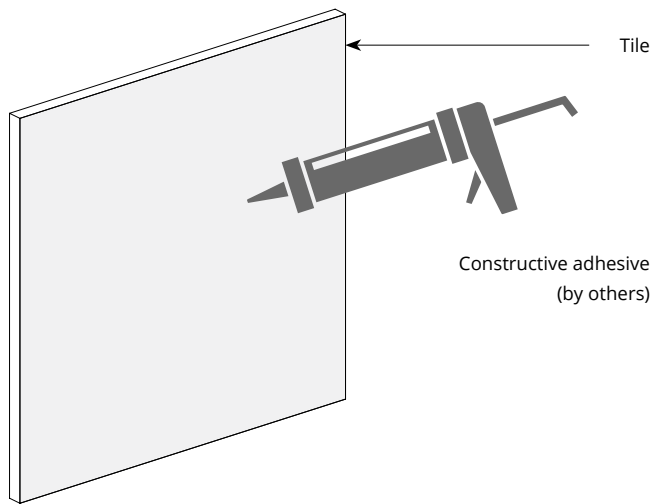
1. Choose Scallop Width

2. Choose Colorways

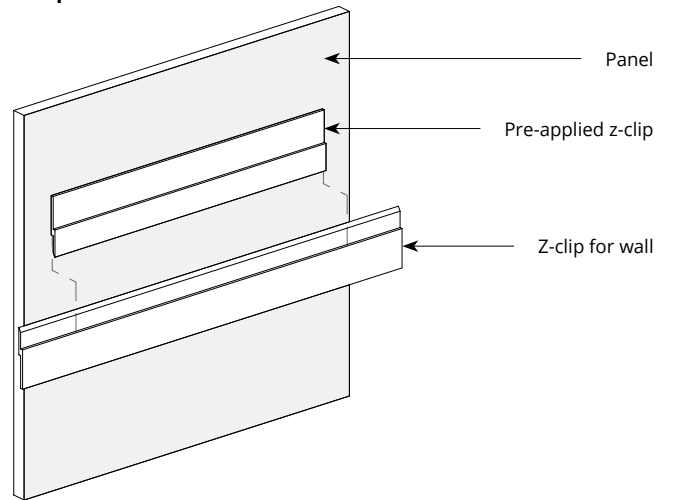
See colorways on page 3.

Mounting Methods

Construction adhesive

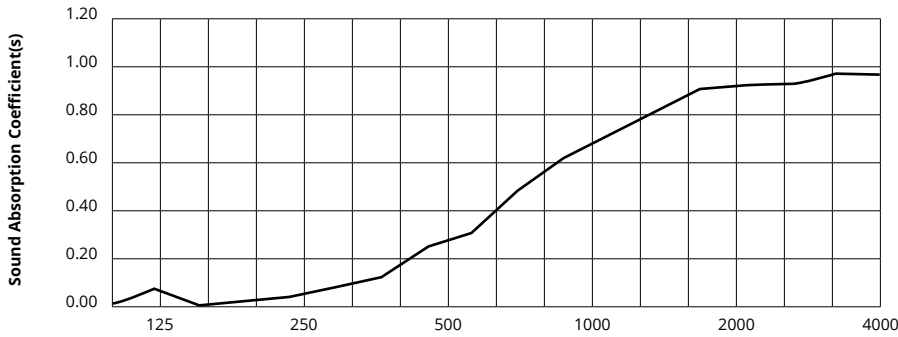


Z-clip wall mount



Acoustic Performance

Test Method	ASTM C423-09a
Install Method	A
Rating Method	AS ISO 11654-2002
Test Results	NRC 0.45, no air gap SAA 0.43, no air gap




Frequency f (Hz)	125	250	500	1000	2000	4000	NRC
12mm	0.06	0.02	0.23	0.61	0.89	0.95	0.45

What is a Noise Reduction Coefficient (NRC)?

You'll find the NRC rating in the specifications of all of our products. This acronym stands for Noise Reduction Coefficient, and is expressed as a single number, a rating that describes the degree to which acoustic products can absorb sound.

You can use NRC values to understand the overall performance of our acoustic wall and ceiling products. The higher the NRC, the better the product is at soaking up the sound.

Performance Indices: Noise Reduction Coefficient (NRC) results represent the absorption coefficients measured at the one third octave bands at 125, 250, 500, 1000, 2000 and 4000 Hz rounded to the nearest 0.05. Acoustic testing has been performed according to the methods mentioned above. Customization of installation of the product could alter the results. Sound Absorption Average (SAA) indicates the absorption coefficient average for the twelve one-third octave bands ranging between 200 and 2500 Hz.

 For questions or additional product information, visit [acoufelt.com.au](https://www.acoufelt.com.au) or call **1800 626 462**.

Filter Wall Panels | March 2026