

A photograph showing a close-up of a light-colored, modern sofa with a tufted backrest and armrest, positioned on a grey, textured carpet tile. The carpet tile has a fine, pebbled texture. The sofa is on the left side of the frame, and the carpet tile covers the majority of the floor area. The image is presented with rounded corners.

acouflor
making quiet

SoftStep™ Inglenook Carpet Tiles

Specifications

Application	Floor
Backing	Felt polyester + fibreglass
Pile content	Solution dyed nylon
Style	Multi-level textured loop pile
Recycled content	Backing made from >90% recycled PET
Dimensions	500 x 1000mm
Thickness	11mm +/- 10%
Backing Thickness	3.2mm
Tiles per box	11 tiles (5.5m ²)
Classification	ACCS Extra Heavy Duty & Residential and Extra Heavy Duty Commercial

Guarantees

Wear warranty	15 years*
Castor chair proof	10 years*
Anti-static	Lifetime*
Colourfastness warranty	20 years*
Impervious	15 years

*conditions apply

Shipping



QuickShip

QuickShip products can be despatched within **24 hours**.

Technical Data

Fire test method*	AS/ISO 9239.1-2003
Critical heat flux	Mean result 3.8kW/m ²
Smoke deviation rate	Mean result 205%.min
Dimensional stability	-0.05%
Electrostatic propensity	<0.3000 kv
Thermal resistance	0.68m ² K/W
Total VOC test method	ISO10580
Total VOC result	<500µg/m2.h (24 hour)
Colourfastness test method	ISO 105-B02
Rating	6-7
Mildew and Odour	HN 0028-2004 Determination of Mildew Growth and Odour on Trim Material. Rating = satisfactory

*note that the fire test report is based on 9.5mm tile

Sustainability

 Backing made from 90% min. recycled PET

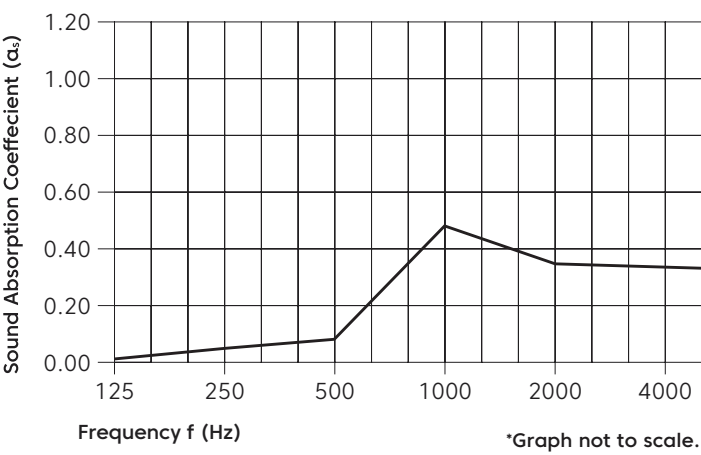
 Red List Free Declare Label





Acoustic Performance

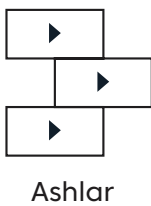
Test method	ASTM C423-2022: Standard Test Method for Sound Absorption and Sound Absorption Coefficients by the Reverberation Room Method
Rating method	AS ISO 11654 -2002: Acoustics - Rating of sound absorption - Material and sytems
Test results	NRC 0.25 SAA 0.23



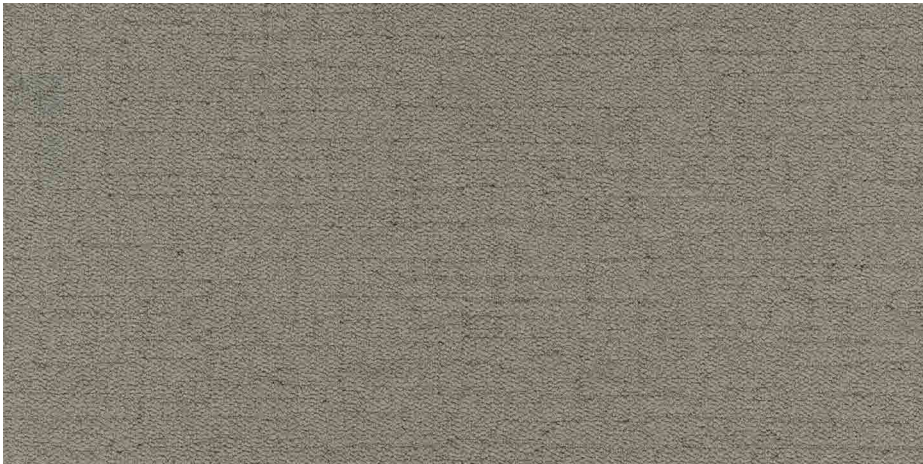
Frequency (Hz)	125	250	500	1000	2000	4000	NRC
αs	0.01	0.05	0.09	0.48	0.37	0.35	0.25

Performance Indices: **Noise Reduction Coefficient (NRC)** results represent the absorption coefficients measured at the one third octaves bands at 125, 250, 500, 1000, 2000 and 4000 Hz rounded to the nearest 0.05. Acoustic testing has been performed according to the methods mentioned above. Customisation of installation of the product could alter the results. **Sound Absorption Average (SAA)** indicates the absorption coefficient average for the twelve one-third octave bands ranging between 200 and 2500 Hz

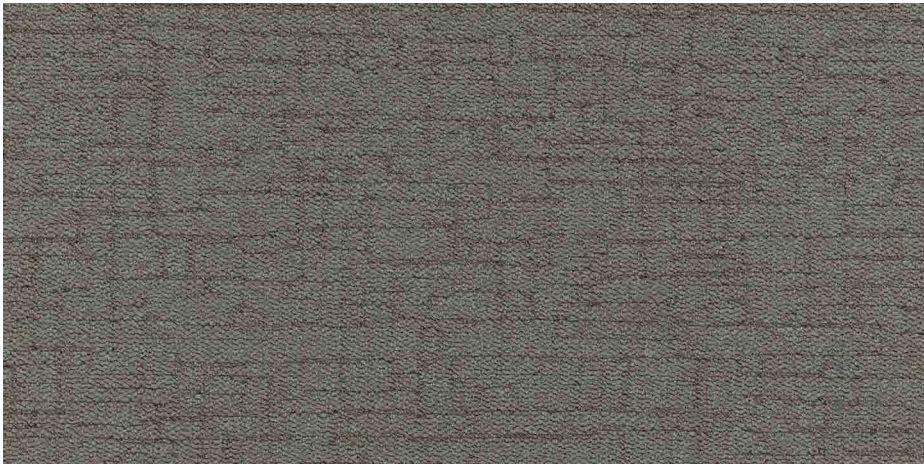
Configurations



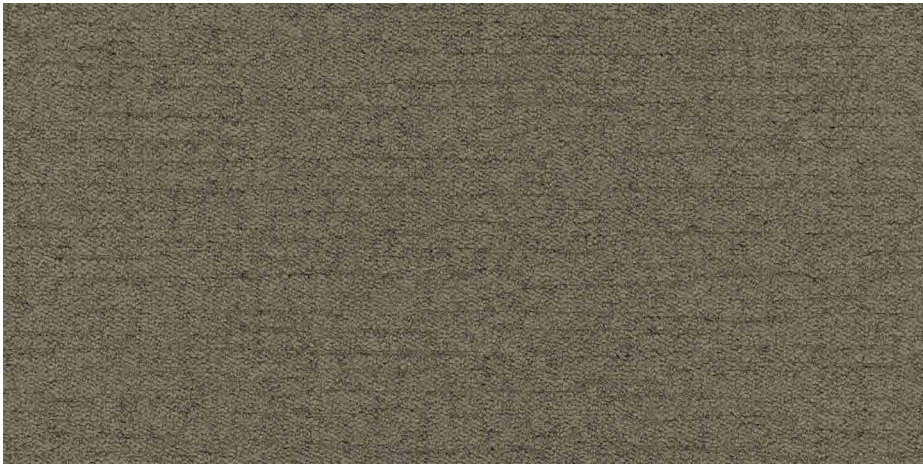
Colourways



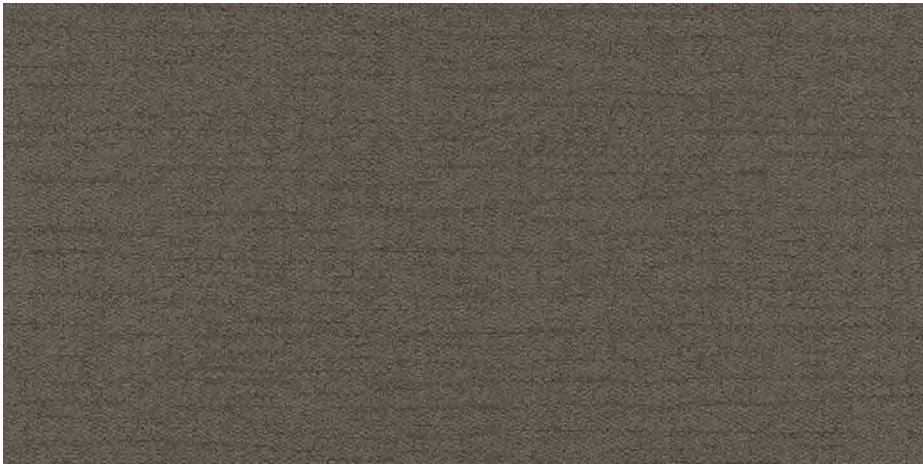
Hearth - IN01



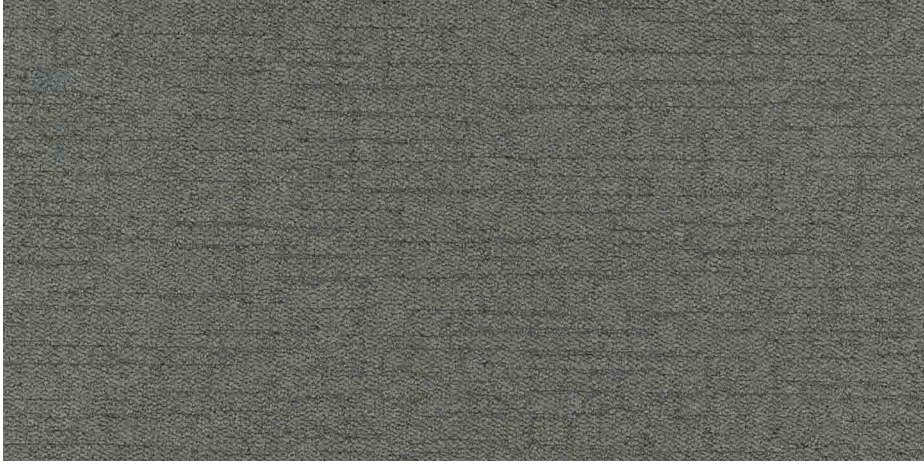
Smoke - IN02



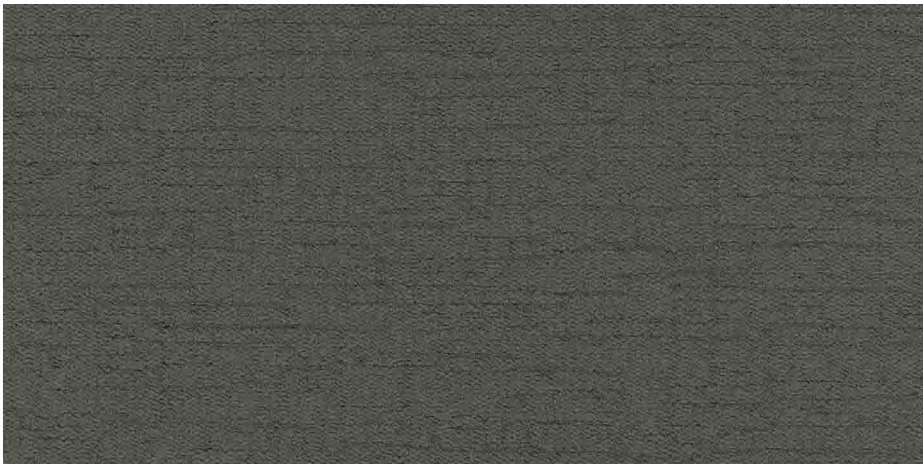
Spark - IN03



Glow - IN04



Kettle - IN05



Smoulder - IN06



Crackle - IN07



Cinder - IN08