



MultiStorey

QuietBack™ Carpet Tiles

acoufelt
making quiet

Product Detail

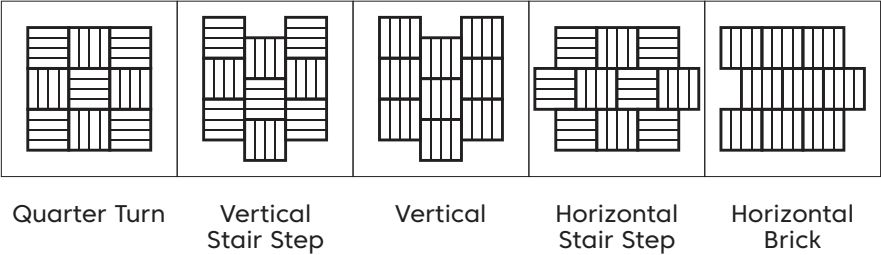
Application	Floor
Composition	QuietBack™
Material	100% solution dyed nylon
Style	Multi-level textured loop pile
Recycled content	Backing made from >80% recycled PET
Tile dimensions	500 x 500mm
Thickness	10mm +/- 10%
Tiles per box	20

Guarantees

Wear warranty	20 years*
Castor chair proof	20 years*
Anti-static	Lifetime*
Colorfast	20 years*
Classification	Commercial Extra Heavy Duty

*conditions apply

Installation Method



Technical Data

Dimensional stability	ISO 17984, -0.05%
Electrostatic propensity	AATCC 134, < 0.70 kW
Color fastness	ISO 105-B02, 6-7
Thermal resistance	0.2m² K/W
Fire test method	AS/ISO 9239.1-2003
Critical heat flux	Mean result 7.4kW/m²
Smoke deviation rate	Mean result 175%.min
Fire test method	ASTM E648
Classification	Class 1
Critical heat flux	Average, 0.54kWm²
Smoke density test method	ASTM E662 (Flaming)
Smoke density test rate	450 or less
Fire test method	EN ISO 9239
Critical heat flux	Cfl
Smoke deviation rate	s1
Antimicrobial effectiveness	AATTCC Method 174:2016 Part II, <100

Sustainability

Backing made from 80% min. recycled content

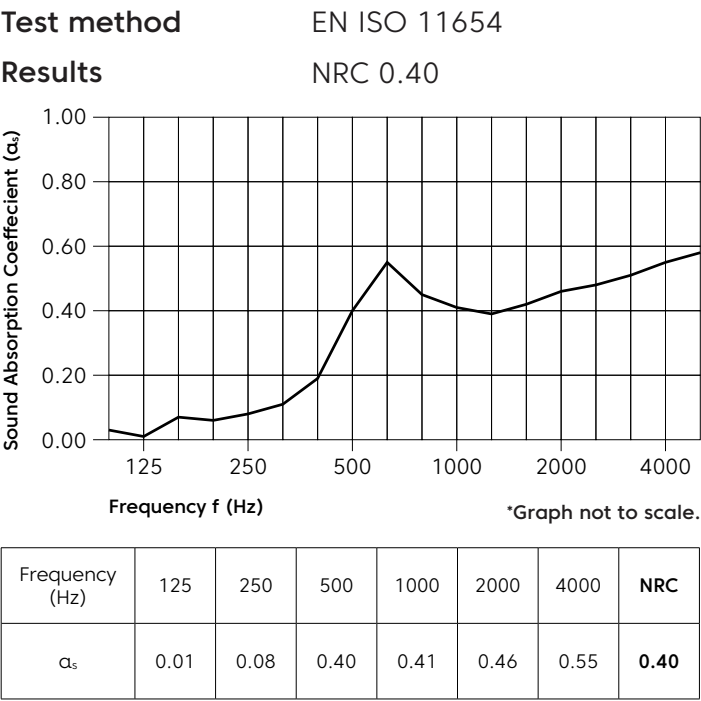
Generated using 40% solar energy

Total VOC's less than 0.5 mg/m³ (3rd Party Verified)

Red List Free Declare Label (3rd Party Verified)

Phenol & formaldehyde free

Acoustic Performance



QuickShip

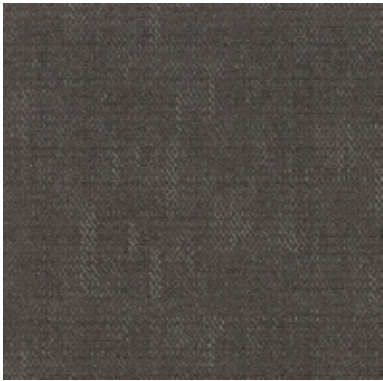
QuickShip Rapid



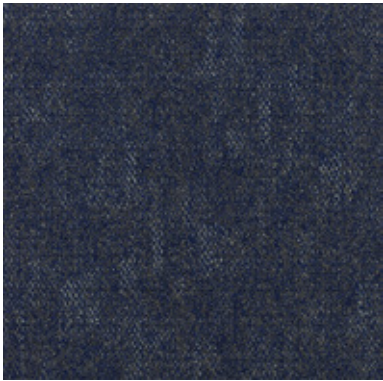
QuickShip Rapid products can be despatched within 1-2 days.

Colorways

Light Reflectance Values (LRV), are **a measure of the percentage of visible and usable light that is reflected from a surface** when illuminated by a light source.



Lift
LRV – 6.50%



Sketch
LRV – 4.42%



Level One
LRV – 3.83%



View
LRV – 11.21%



Structure
LRV – 3.38%



Shadow
LRV – 3.85%