

Pleat Wall Panels

Premier Collection

Pleat wall panels offer a seamless blend of color and acoustic performance with their vertical pleat design, adding subtle texture and elegance to any space. Available in various widths, you can create a distinct pattern—opting for uniform panels for a timeless look or alternate widths for added visual interest. These panels not only absorb unwanted sound but also mask wall seams and imperfections, effortlessly attaching over existing finishes to deliver a polished, architectural backdrop.

Specifications

Surface	Wall
Material	FilaSorb™ polyester felt
Weight	12mm, 2400gsm
Standard Sizes	Width: 1200mm W Height: 2800mm H Pleat width: 300, 600mm W Pleat depth: 75mm D



Pleat Wall Panel in Stonewash

Technical

NRC Rating	0.45* Pending product testing
Fire Test	Test Result Pending
Water Sorption	ASTM C1104-2019 (A Modified) Water sorbed by weight: 0.20% (based on a 12mm thick panel)
Colorfastness	ISO 105-B02, 6-7

* Test results available upon request.

Details

Lead Time	Refer to Product Lead Time Matrix
Origin	Australia
Warranty	Product: 20 years* Colorfastness: 20 years*

* Conditions apply

Environmental

Recycled Content	Minimum 60%
Energy	Generated using 40% solar energy
Indoor Air Quality	VOC less than/equal to 0.5mg/m3
Recyclable	100%*
Certifications	Declare Certification - LBC Red List Free (third-party verified) SCS Global Indoor Advantage Gold

* PET is recyclable through participating partners.



For questions or additional product information, visit [acoufelt.com.au](https://www.acoufelt.com.au) or call 1800 626 462

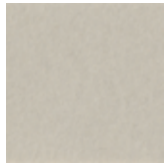
Pleat Wall Panels | April 2026

Colorways

PREMIER



White
WH12



Almond
AL55



Celery
CE65



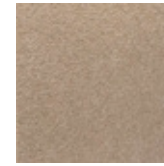
Sencha
SE58



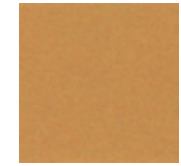
Metal
ME03



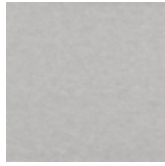
Flamingo
FL61



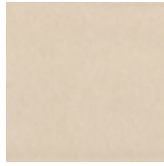
Quartz
QU67



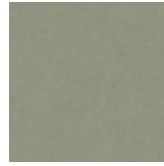
Turmeric
TU60



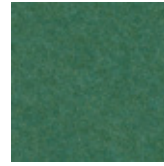
Platinum
PL04



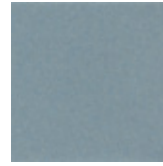
Pearl
PE21



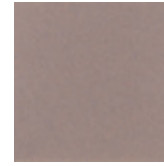
Pistachio
PI25



Thistle
TH28



Stonewash
ST72



Amethyst
AM69



Valentine
VA70



Wheat
WH68



Grey
GR02



Ivory
IV11



Eucalyptus
EU71



Peacock
PE20



Periwinkle
PE23



Lilac
LI13



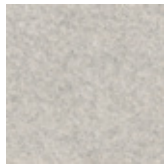
Peach
PE19



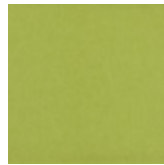
Popcorn
PO26



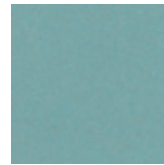
Slate
SL27



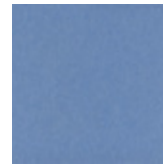
Milkyway
MI74



Wasabi
WA29



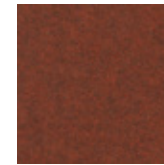
Sea Salt
SE57



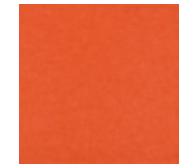
Marine
MA15



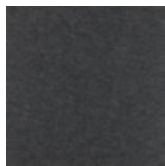
Berry
BE06



Peppercorn
PE22



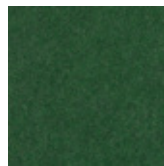
Carrot
CA08



Charcoal
CH01



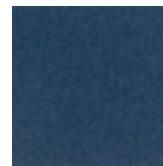
Umber
UM54



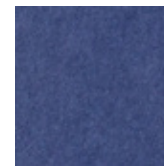
Oregano
OR18



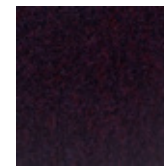
Azure
AZ05



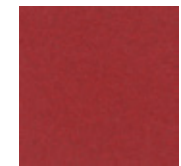
Granite
GR62



Iris
IR10



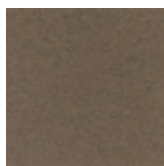
Shiraz
SH63



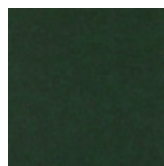
Currant
CU59



Piano Black
PI24



Walnut
WA56



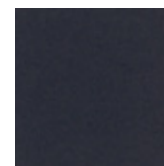
Kale
KA12



Denim
DE09



Midnight
MI16



Flint
FL64



For questions or additional product information,
visit acoufelt.com.au or call 1800 626 462

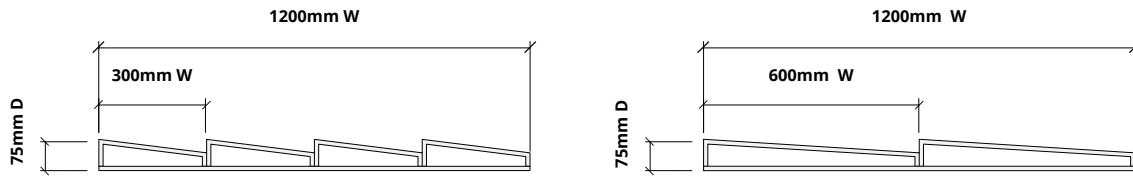
Pleat Wall Panels | April 2026

Sizes

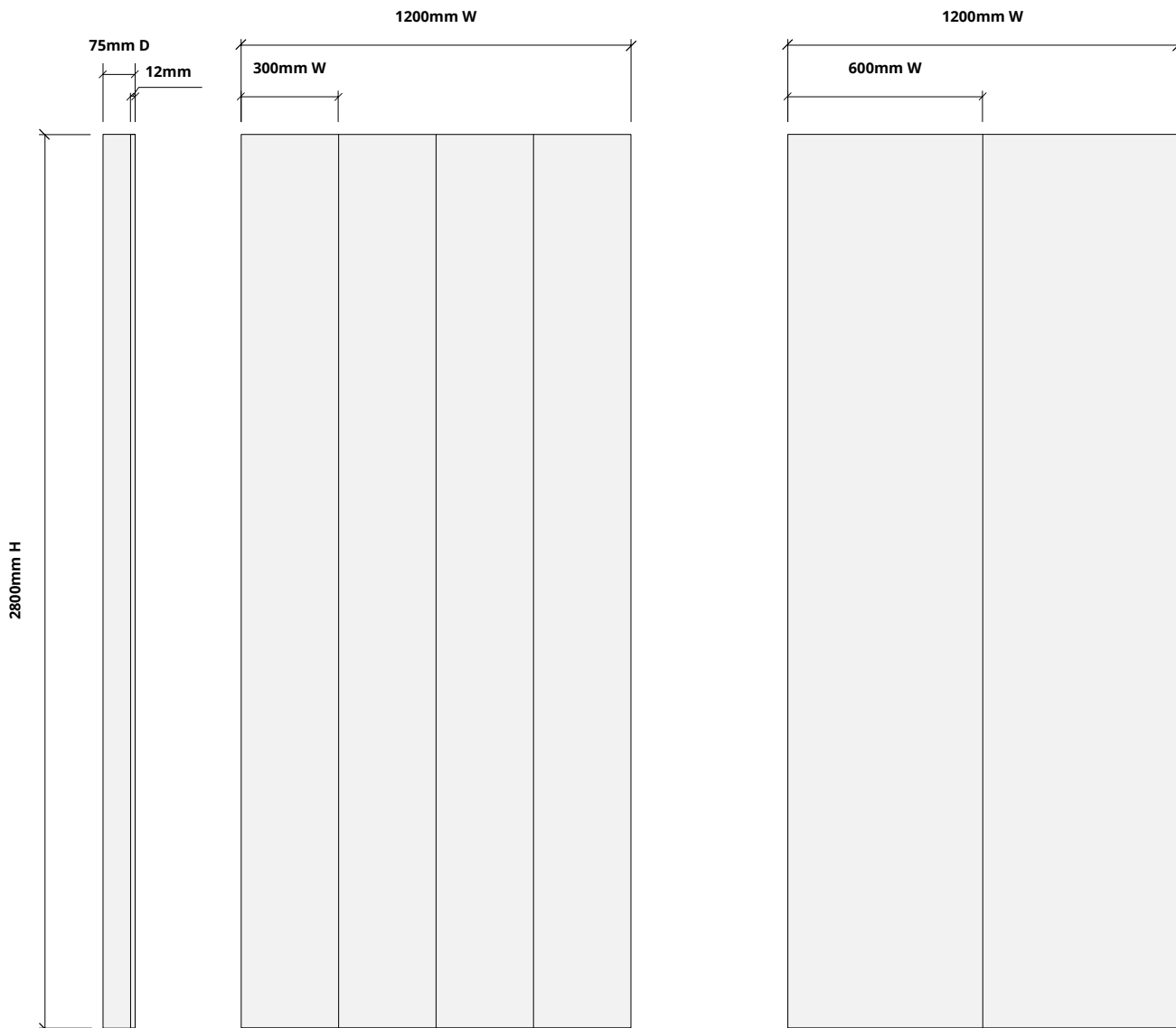
Standard Sizes

Width: 1200mm W
Height: 2800mm H
Pleat width: 300, 600mm W
Pleat depth: 75mm D

Plan



Elevations

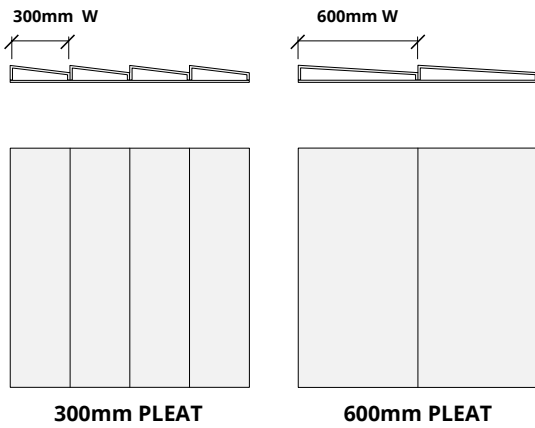


How to Specify

1. Choose Scallop Width

2. Choose Colorways

Select desired pleat width. Panels can be mixed for desired effect.



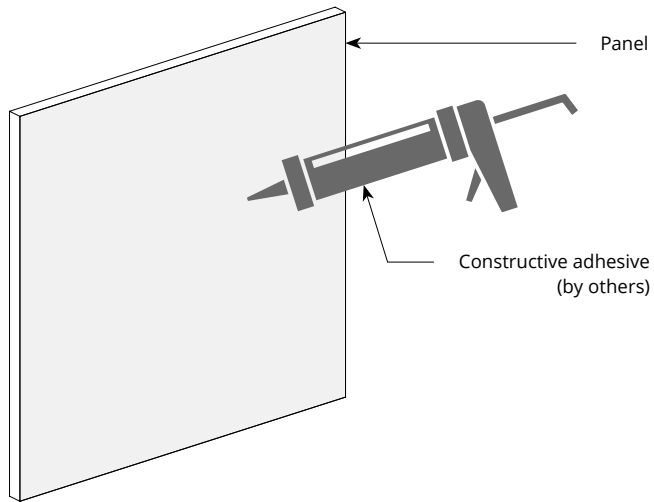
1. Choose Scallop Width

2. Choose Colorways

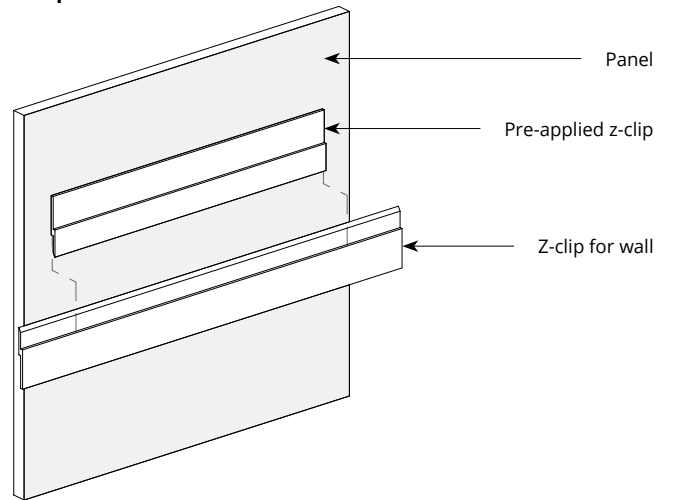
See colorways on page 3.

Mounting Methods

Construction adhesive



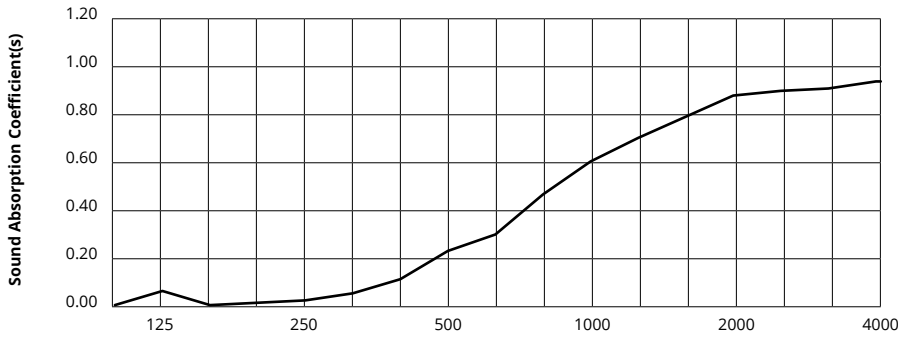
Z-clip wall mount



** For wall mount applications only.*

Acoustic Performance

Test Method	ASTM C423-09a
Install Method	A
Rating Method	ISO 11654-2002
Test Results	NRC 0.45 Pending product testing




Frequency f (Hz)	125	250	500	1000	2000	4000	NRC
12mm	0.06	0.02	0.23	0.61	0.89	0.95	0.45

What is a Noise Reduction Coefficient (NRC)?

You'll find the NRC rating in the specifications of all of our products. This acronym stands for Noise Reduction Coefficient, and is expressed as a single number, a rating that describes the degree to which acoustic products can absorb sound.

You can use NRC values to understand the overall performance of our acoustic wall and ceiling products. The higher the NRC, the better the product is at soaking up the sound.

Performance Indices: Noise Reduction Coefficient (NRC) results represent the absorption coefficients measured at the one third octave bands at 125, 250, 500, 1000, 2000 and 4000 Hz rounded to the nearest 0.05. Acoustic testing has been performed according to the methods mentioned above. Customization of installation of the product could alter the results. Sound Absorption Average (SAA) indicates the absorption coefficient average for the twelve one-third octave bands ranging between 200 and 2500 Hz.

 For questions or additional product information, visit [acoufelt.com.au](https://www.acoufelt.com.au) or call **1800 626 462**

Pleat Wall Panels | April 2026