

# Delta

QuickDrop™ DIY Carpet Tiles

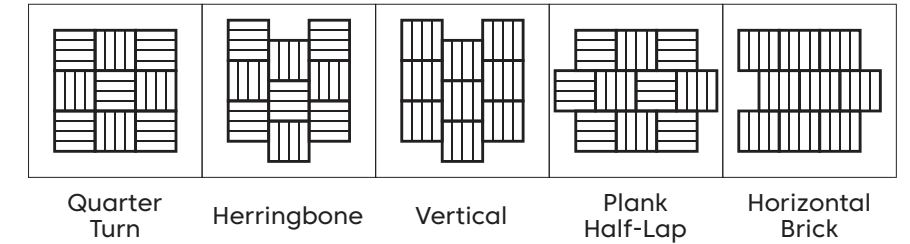
## Product Detail

<b>Product</b>	Carpet Tile
<b>Application</b>	Floor
<b>Composition</b>	100% solution dyed nylon
<b>Backing</b>	QuickDrop™
<b>Style</b>	Level loop pile
<b>Content</b>	100% Econyl yarn
<b>Width</b>	500mm
<b>Length</b>	500mm
<b>Thickness</b>	7mm +/- 1mm

## Technical Data

<b>Dimensional Stability</b>	ISO 17984, -0.05%
<b>Electrostatic Propensity</b>	AATCC 134 ≤ 1000V
<b>Light Fastness</b>	ISO 105-B02, 6-7
<b>Thermal Resistance</b>	0.2m² K/W
<b>Fire Test Method Number</b>	AS/ISO 9239.1
<b>Critical Radiant Flux</b>	Mean result 7.5kW/m²
<b>Smoke Dev Rate</b>	Mean result 239%.min

## Installation Method



## DIY Carpet Tile

QuickDrop™ is an innovative 'no adhesive' gripping layer available as an add-on to Delta carpet tiles. The special gripping construction of the QuickDrop™ layer enables tiles to be laid without adhesive, floor sealers, glue or taping. No carpet laying experience required. With a few basic tools, installing, moving and reinstalling carpet has never been easier, making this collection perfect for fuss-free and mess-free applications.

## Guarantees

<b>Wear Warranty</b>	20 years*
<b>Castor Chair Proof</b>	20 years*
<b>Anti-Static Classification</b>	Lifetime*
	Commercial Extra Heavy Duty
	*conditions apply

## Environmental Attributes

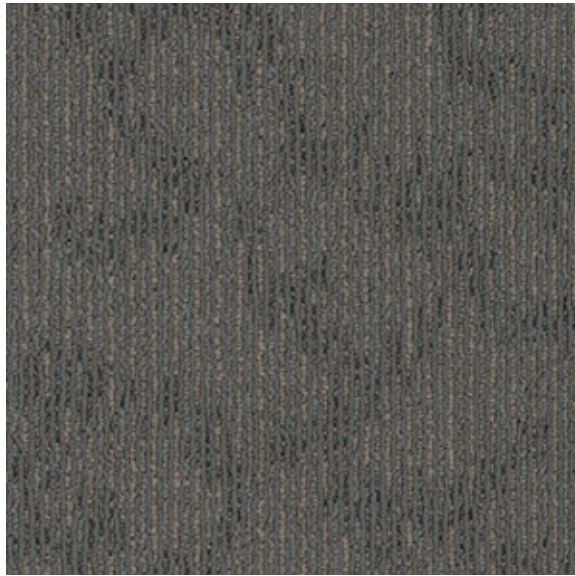
- Sustainable Econyl yarn
- Low VOC



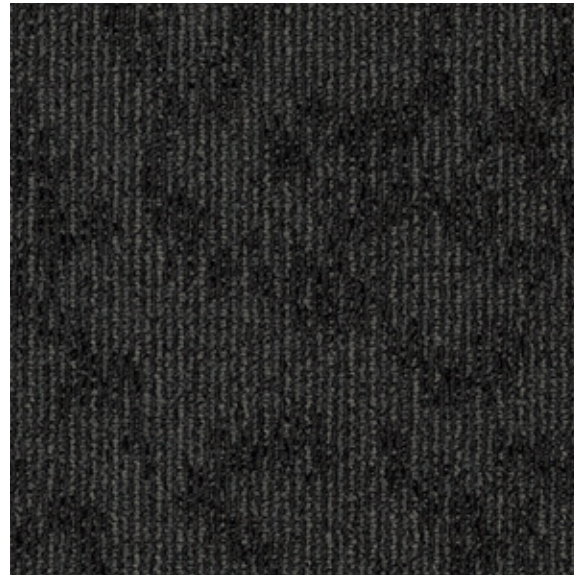
**ECONYL®**

# Colorways

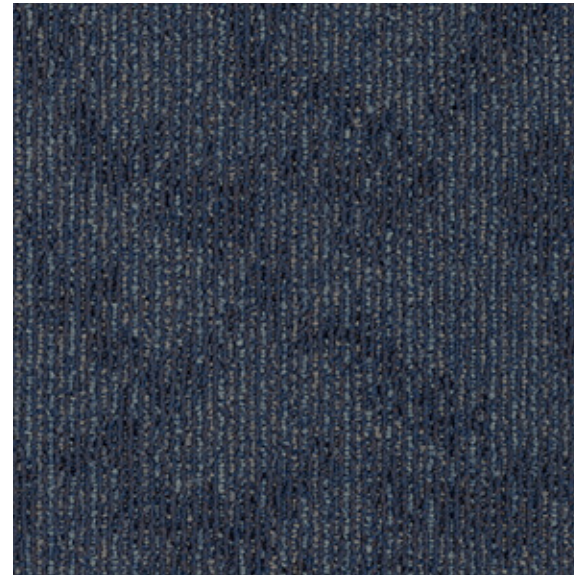
---



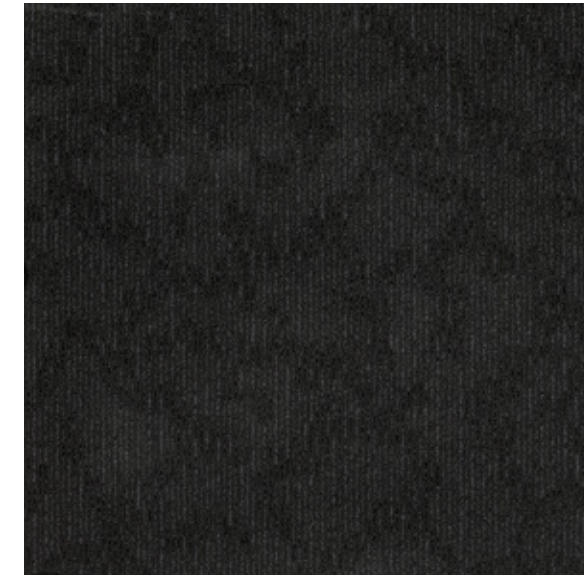
Gorge



Ripple



Spring



Movement