



Reveal Ceiling Baffles

Premier Collection

Reveal Ceiling Baffles utilize a double layer of sound-absorbing materials to control unwanted noise in a variety of situations. A two-tone effect on one side adds color dimension while the opposite viewpoint presents as standard linear baffles.

Specifications

Surface	Ceiling
Material	FilaSorb™ polyester felt
Weight	2400 gsm
Standard Sizes	Heights: 102mm up to 610mm H (51mm increments) Lengths: Range from 305mm up to 2794mm L <i>See page 4 for more details. Custom sizes available</i>



Reveal Ceiling Baffles in Azure and Slate

Technical

NRC Rating	0.60*
Fire Test	Test Results Pending
Water Sorption	ASTM C1104-2019 (A Modified) Water sorbed by weight: 0.20% (based on a 12mm thick panel)
Colorfastness	ISO 105-B02, 6-7

* Test results available upon request.

Details

Lead Time	Refer to Product Lead Time Matrix
Origin	Australia
Warranty	Product: 20 years* Colorfastness: 20 years*

* Conditions apply

Environmental

Recycled Content	Minimum 60%
Energy	Generated using 40% solar energy
Indoor Air Quality	VOC less than/equal to 0.5mg/m3
Recyclable	100%*
Certifications	Environmental Product Declaration Declare Certification - LBC Red List Free (third-party verified) SCS Global Indoor Advantage Gold

* PET is recyclable through participating partners.

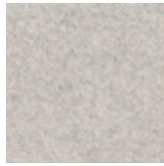


For questions or additional product information,
visit acoufelt.com.au or call 1800 626 462

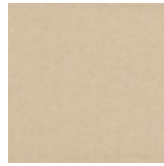
Reveal Ceiling Baffles | JAustralia 2026



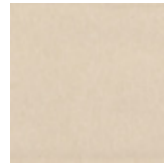
White
WH12



Milkyway
MI74



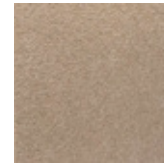
Ivory
IV11



Pearl
PE21



Valentine
VA70



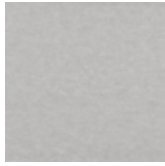
Quartz
QU67



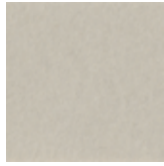
Stonewash
ST72



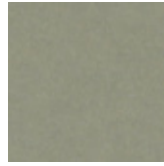
Sea Salt
SE57



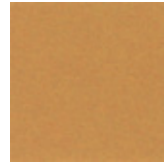
Platinum
PL04



Almond
AL55



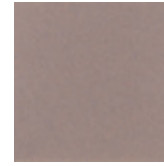
Pistachio
PI25



Turmeric
TU60



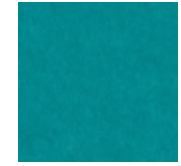
Flamingo
FL61



Amethyst
AM69



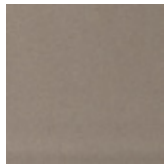
Periwinkle
PE23



Peacock
PE20



Metal
ME03



Mushroom
MU75



Celery
CE65



Wheat
WH68



Peach
PE19



Lilac
LI13



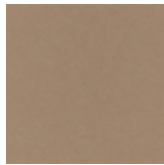
Marine
MA15



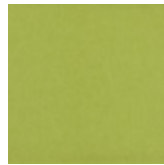
Sencha
SE58



Grey
GR02



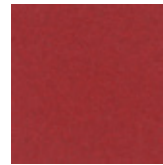
Umber
UM54



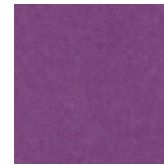
Wasabi
WA29



Popcorn
PO26



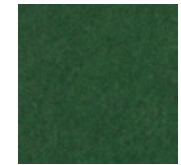
Currant
CU59



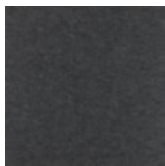
Berry
BE06



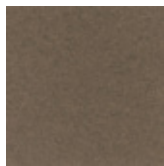
Azure
AZ05



Oregano
OR18



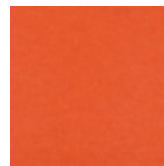
Charcoal
CH01



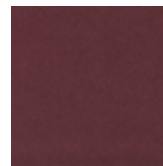
Walnut
WA56



Eucalyptus
EU71



Carrot
CA08



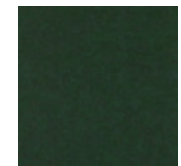
Loganberry
LO77



Granite
GR62



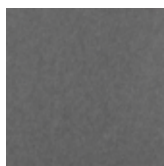
Denim
DE09



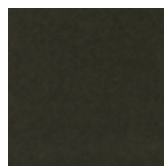
Kale
KA12



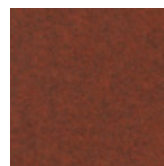
Piano Black
PI24



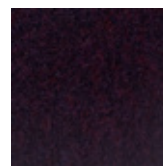
Slate
SL27



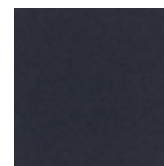
Nori
NO76



Peppercorn
PE22



Shiraz
SH63



Flint
FL64



Midnight
MI16



For questions or additional product information,
visit acoufelt.com.au or call 1800 626 462

Reveal Ceiling Baffles | JAustralia 2026

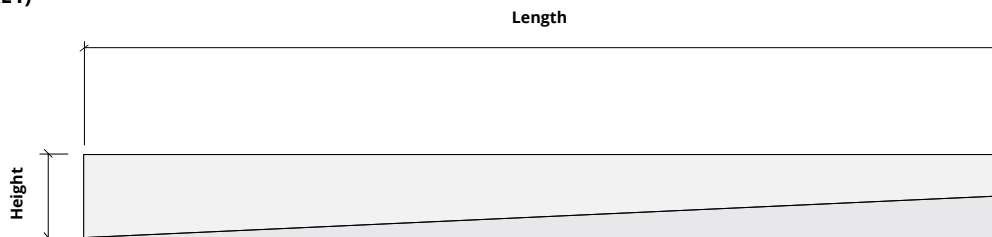
Sizes

Standard Heights 102mm up to 610mm H (51mm increments)
Custom sizes available

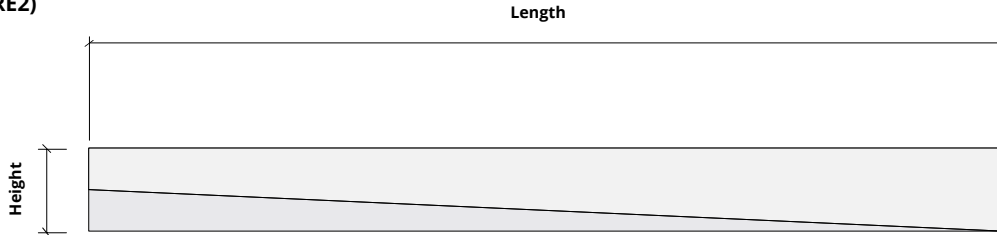
Standard Lengths 305, 457, 610, 762, 914, 1067, 1219, 1372, 1524,
 1676, 1829, 1981, 2134, 2286, 2438, 2591, 2743,
 2794mm L
Custom sizes available

Height
102mm
152mm
203mm
254mm
305mm
356mm
406mm
457mm
508mm
559mm
610mm

Reveal 1 (RE1)

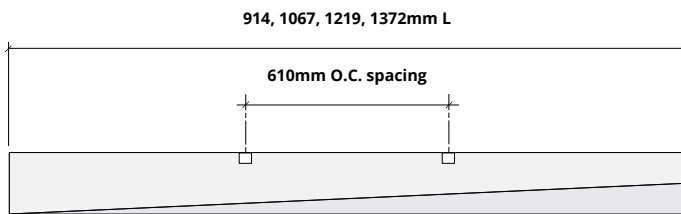
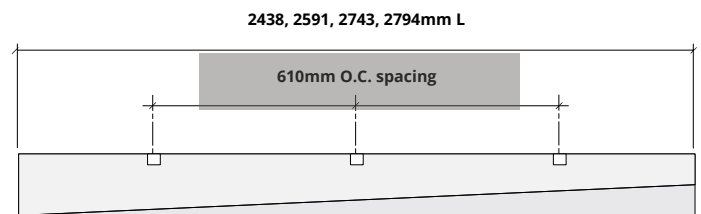
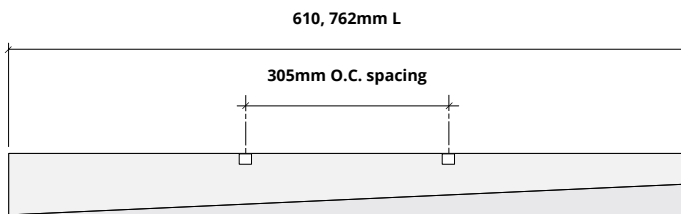
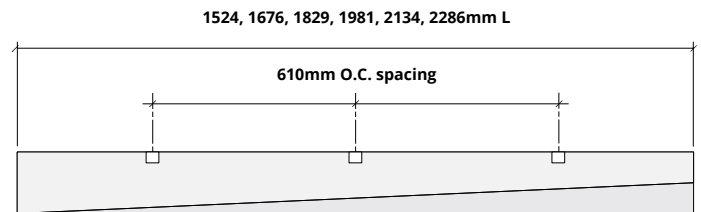
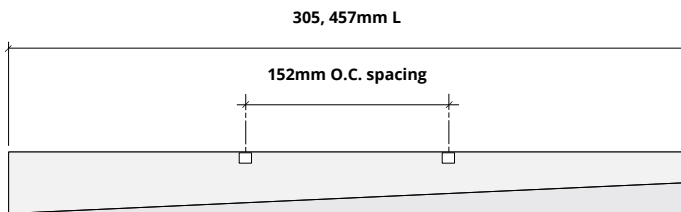


Reveal 2 (RE2)



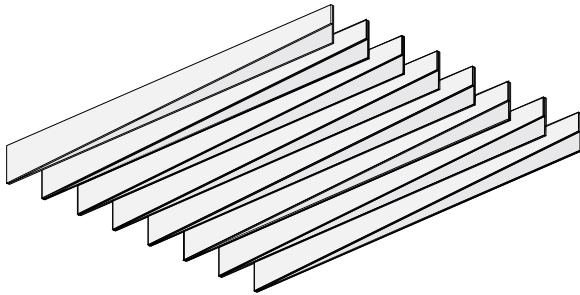
Hardware Spacing

305, 457mm L	152mm on center spacing
610, 762mm L	305mm on center spacing
914, 1067, 1219, 1372m L	610mm on center spacing
1524, 1676, 1829, 1981, 2134, 2286mm L	610mm on center spacing
2438, 2591, 2743, 2794mm L	762mm on center spacing

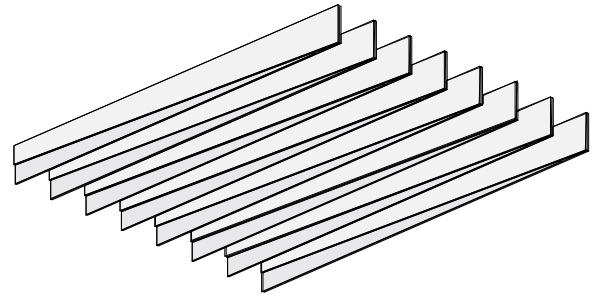


Recommended Layouts

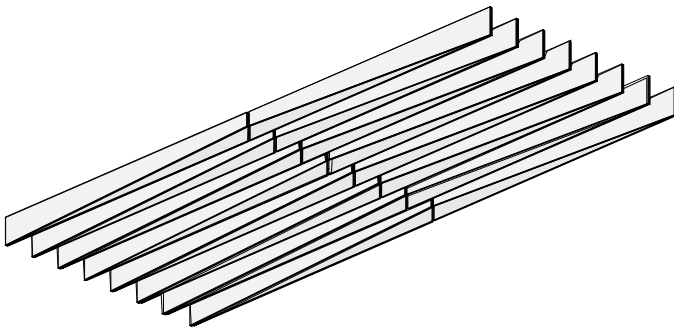
Layout 1 (100% RE1)



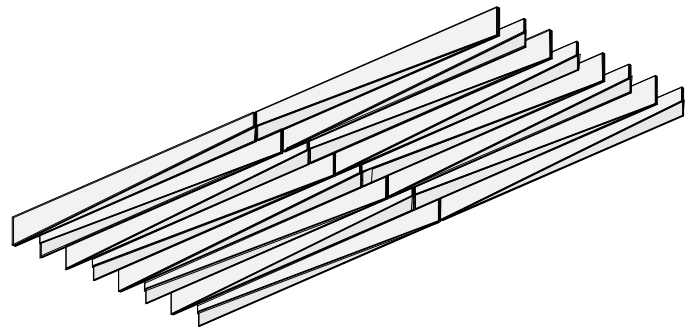
Layout 2 (100% RE2)



Layout 3 (50% RE1 & 50% RE2)



Layout 4 (50% RE1 & 50% RE2)



How to Specify

1. Choose Height

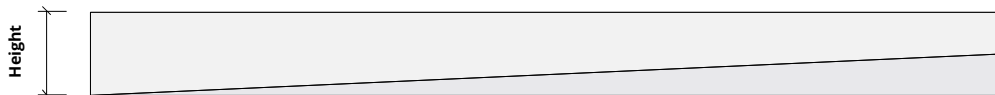
2. Choose Length

3. Choose Layout

4. Choose Colorways

Select height based on desired design: 102 mm up to 610 mm H, 51 mm increments

Height
102mm
152mm
203mm
254mm
305mm
356mm
406mm
457mm
508mm
559mm
610mm



1. Choose Height

2. Choose Length

3. Choose Layout

4. Choose Colorways

Groove baffles come in the standard lengths of: 305, 457, 610, 762, 914, 1067, 1219, 1372, 1524, 1676, 1829, 1981, 2134, 2286, 2438, 2591, 2743, 2794mm L.
Custom sizes available.

1. Choose Height

2. Choose Length

3. Choose Layout

4. Choose Colorways

See recommended layouts on page 6 or design a layout of your choice.

1. Choose Height

2. Choose Length

3. Choose Layout

4. Choose Colorways

See colorway choices on page 3.

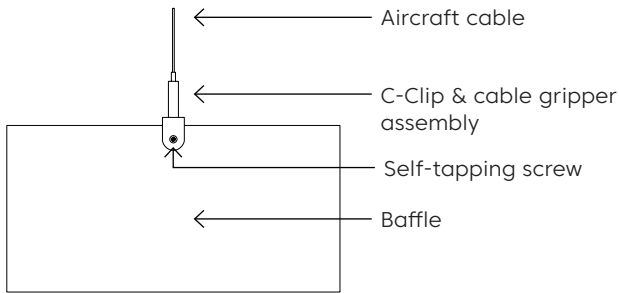


For questions or additional product information,
visit acoufelt.com.au or call 1800 626 462

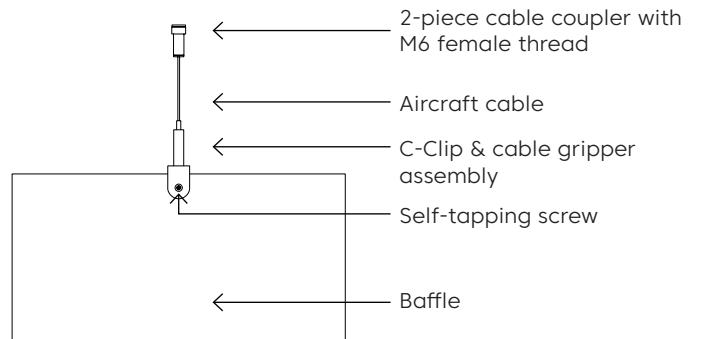
Reveal Ceiling Baffles | JAustralia 2026

Mounting Methods

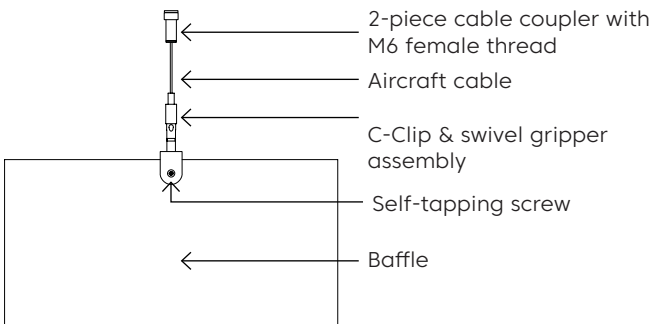
Cable



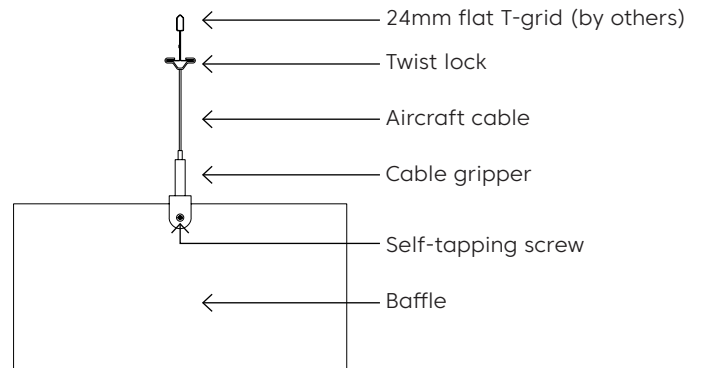
Cable to deck



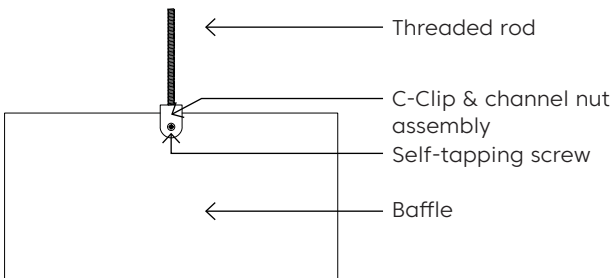
Swivel cable to deck



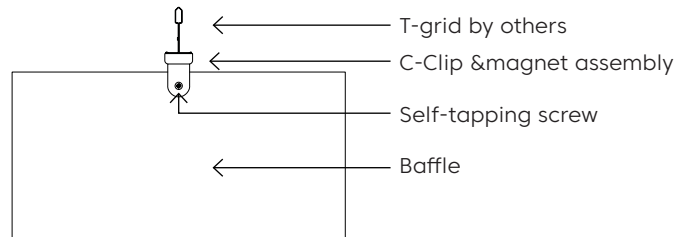
Cable to T-grid



Threaded Rod



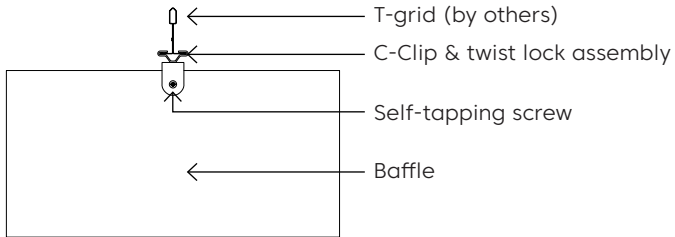
Magnet to T-grid



For questions or additional product information, visit acoufelt.com.au or call 1800 626 462

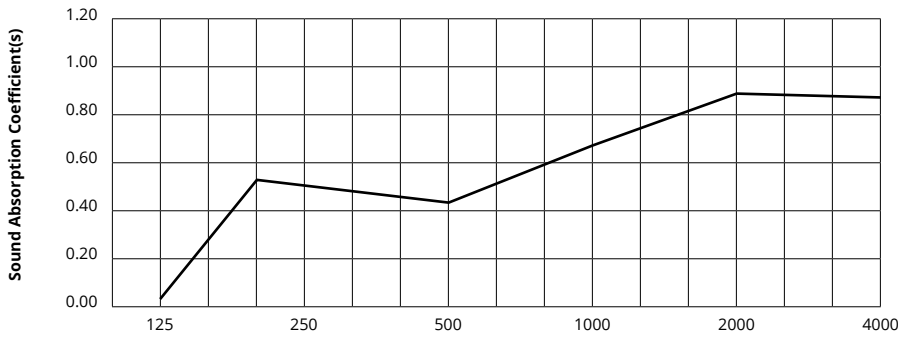
Reveal Ceiling Baffles | JAustralia 2026

Twist lock to T-grid



Acoustic Performance

Test Method	ASTM C432-17
Rating Method	ISO 11654-2002
Test Results	NRC 0.60 SAA 0.55




Frequency f (Hz)	125	250	500	1000	2000	4000	NRC
24mm	0.02	0.57	0.41	0.58	0.87	0.85	0.60

What is a Noise Reduction Coefficient (NRC)?

You'll find the NRC rating in the specifications of all of our products. This acronym stands for Noise Reduction Coefficient, and is expressed as a single number, a rating that describes the degree to which acoustic products can absorb sound.

You can use NRC values to understand the overall performance of our acoustic wall and ceiling products. The higher the NRC, the better the product is at soaking up the sound.

Performance Indices: Noise Reduction Coefficient (NRC) results represent the absorption coefficients measured at the one third octave bands at 125, 250, 500, 1000, 2000 and 4000 Hz rounded to the nearest 0.05. Acoustic testing has been performed according to the methods mentioned above. Customization of installation of the product could alter the results. Sound Absorption Average (SAA) indicates the absorption coefficient average for the twelve one-third octave bands ranging between 200 and 2500 Hz.

 For questions or additional product information, visit [acoufelt.com.au](https://www.acoufelt.com.au) or call **1800 626 462**

Reveal Ceiling Baffles | JAustralia 2026