

acouflor
making quiet



Ridges SoftStep™ Carpet Tiles

Specifications

Application	Floor
Backing	Felt polyester + fibreglass
Pile content	Solution dyed nylon
Style	Multi-level textured loop pile
Recycled content	Backing made from >80% recycled PET
Dimensions	500 x 1000mm
Thickness	9.5mm +/- 10%
Tiles per box	15 tiles (7.5m ²)
Classification	Heavy Duty Commercial

*conditions apply

Guarantees

Wear warranty	15 years*
Castor chair proof	10 years*
Anti-static	Lifetime*
Colorfastness warranty	20 years*

*conditions apply

Shipping



QuickShip

QuickShip products can be despatched within **24 hours**.

Technical Data

Fire test method	AS/ISO 9239.1-2003
Critical heat flux	Mean result 7.0kW/m ²
Smoke deviation rate	Mean result 118%.min
Dimensional stability	-0.05%
Electrostatic propensity	<0.3000 kv
Thermal resistance	0.68m ² K/W
Total VOC test method	SCS-EC10.3-2014 v4.0 meeting standard CDPH/EHLB Standard Method v.1.2-2017
Total VOC result	≤ 0.5mg/m ³ or less
Colorfastness test method	ISO 105-B02
Rating	6-7
Mildew and Odour	HN 0028-2004 Determination of Mildew Growth and Odour on Trim Material. Rating = satisfactory

Sustainability

Backing made from 80% min. recycled PET Red List Free Declare Label

ACCS, Environmental Certification Scheme Level 4 Compliant

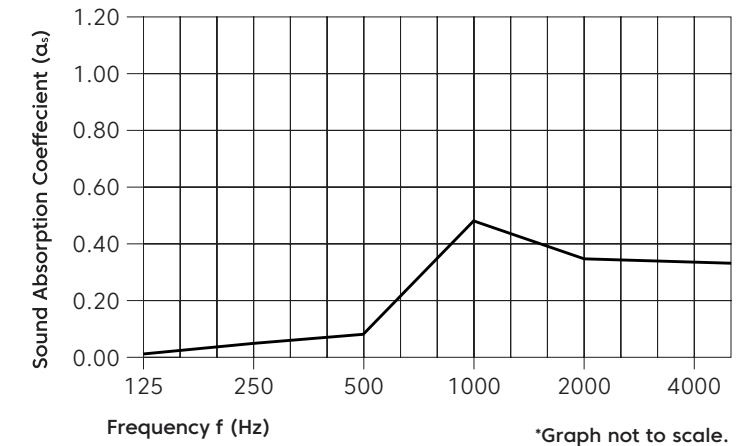
hpcd VERSION 2.3

Acoustic Performance

Test method ASTM C423-2022: Standard Test Method for Sound Absorption and Sound Absorption Coefficients by the Reverberation Room Method

Rating method AS ISO 11654 -2002: Acoustics - Rating of sound absorption - Material and systems

Test results NRC 0.25 | SAA 0.23



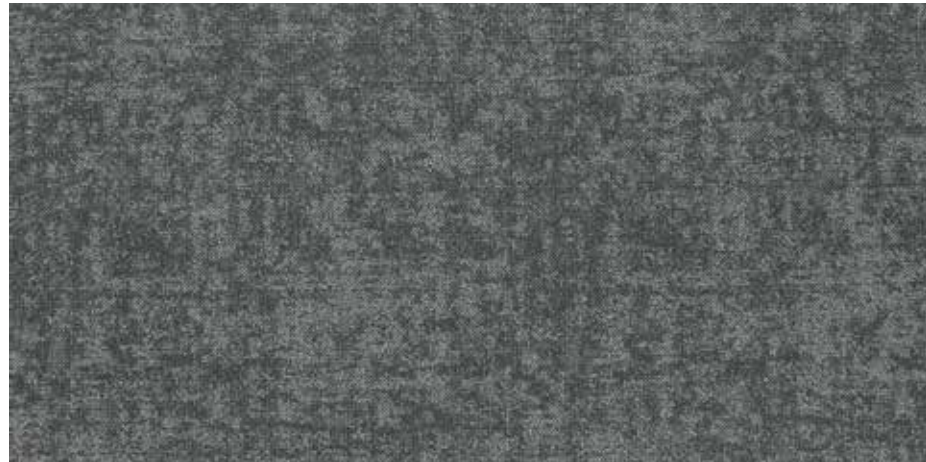
Frequency (Hz)	125	250	500	1000	2000	4000	NRC
α _s	0.01	0.05	0.09	0.48	0.37	0.35	0.25

Performance Indices: **Noise Reduction Coefficient (NRC)** results represent the absorption coefficients measured at the one third octaves bands at 125, 250, 500, 1000, 2000 and 4000 Hz rounded to the nearest 0.05. Acoustic testing has been performed according to the methods mentioned above. Customisation of installation of the product could alter the results. **Sound Absorption Average (SAA)** indicates the absorption coefficient average for the twelve one-third octave bands ranging between 200 and 2500 Hz

Configurations

Herringbone Ashlar Monolithic Non-Directional

Colorways



Cave - R104



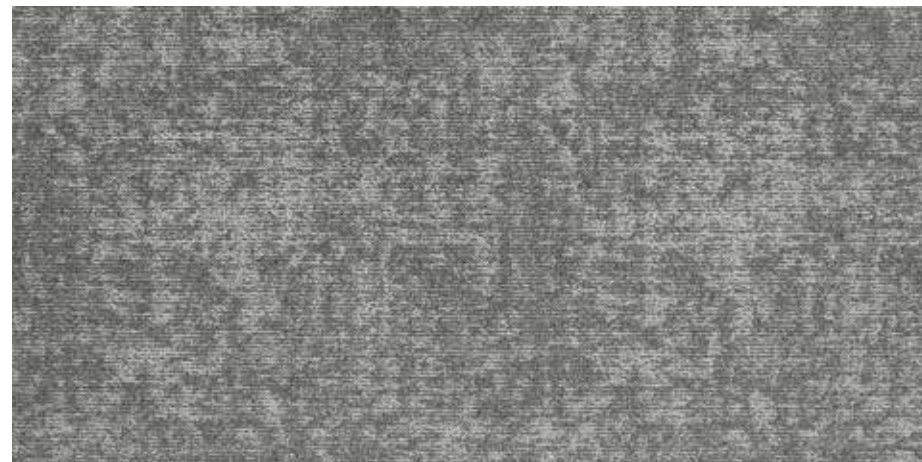
Cliff - R105



Crater - R102



Dune - R106



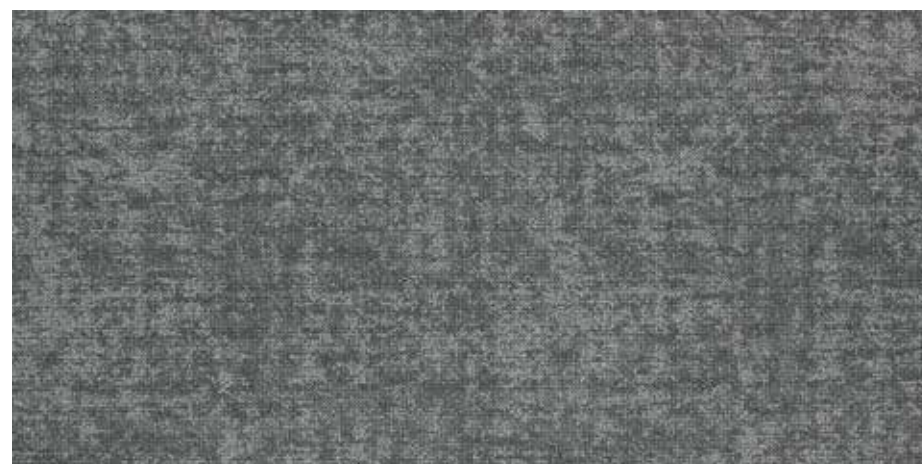
Gully - R108



Mountain - R101



Strait - R107



Valley - R103