

## Shapes Wall Tiles

Premier Collection

Soundscaping your space with acoustic wall tiles lets you play with color, tone, and patterns while building felt wall mosaics. Make your own designs from our collection of geometric and organic shapes offered in our broad color palette.

## Specifications

<b>Surface</b>	Wall
<b>Material</b>	FilaSorb™ polyester felt
<b>Weight</b>	12mm, 2400gsm
<b>Standard Sizes</b>	305mm (dia) - Circle 152 x 264 mm - Diamond 264 x 305 mm - Hexagon 406 x 305 mm - Ogee 152 x 305 mm - Rectangle 305 x 305 mm - Right Triangle 305 x 152 mm - Scale 305 x 305 mm - Square

*Sizes based on shape*



Hexagon in Grey, Metal, Platinum and White

## Technical

<b>NRC Rating</b>	12mm, 0.45*
<b>Fire Test</b>	AS ISO 9705:2033 (according to AS 5637.7:2015 requirements) Group 1 0.93
<b>Water Sorption</b>	ASTM C1104-2019 (A Modified) Water sorbed by weight: 0.20% (based on a 12mm thick panel)
<b>Colorfastness</b>	ISO 105-B02, 6-7

\* Test results available upon request.

## Details

<b>Lead Time</b>	Refer to Product Lead Time Matrix
<b>Origin</b>	Australia
<b>Warranty</b>	Product: 20 years* Colorfastness: 20 years*

\* Conditions apply

## Environmental

<b>Recycled Content</b>	Minimum 60%
<b>Energy</b>	Generated using 40% solar energy
<b>Indoor Air Quality</b>	VOC less than/equal to 0.5mg/m3
<b>Recyclable</b>	100%*
<b>Certifications</b>	Health Product Declaration (HPD)** Environmental Product Declaration Declare Certification - LBC Red List Free (third-party verified) SCS Global Indoor Advantage Gold

\* PET is recyclable through participating partners.

\*\* HPD only applies to 12mm thickness.



© The Health Product Declaration® logo is a registered trademark of HPD Collaborative.

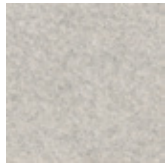


For questions or additional product information, visit [acoufelt.com.au](http://acoufelt.com.au) or call 1800 626 462

Shapes Wall Panels | April 2026



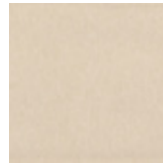
White  
WH12



Milkyway  
MI74



Ivory  
IV11



Pearl  
PE21



Valentine  
VA70



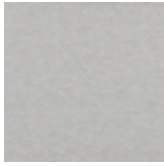
Quartz  
QU67



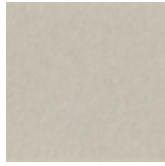
Stonewash  
ST72



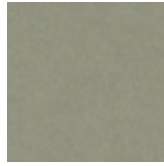
Sea Salt  
SE57



Platinum  
PL04



Almond  
AL55



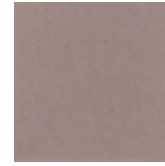
Pistachio  
PI25



Turmeric  
TU60



Flamingo  
FL61



Amethyst  
AM69



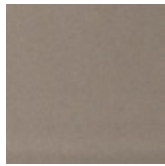
Periwinkle  
PE23



Peacock  
PE20



Metal  
ME03



Mushroom  
MU75



Celery  
CE65



Wheat  
WH68



Peach  
PE19



Lilac  
LI13



Marine  
MA15



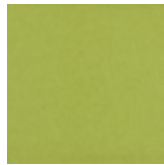
Sencha  
SE58



Grey  
GR02



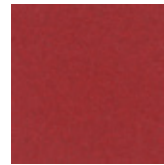
Umber  
UM54



Wasabi  
WA29



Popcorn  
PO26



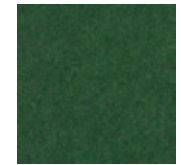
Currant  
CU59



Berry  
BE06



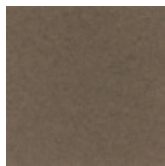
Azure  
AZ05



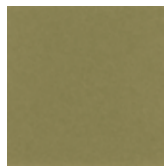
Oregano  
OR18



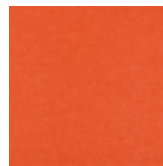
Charcoal  
CH01



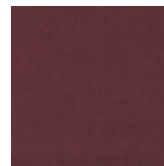
Walnut  
WA56



Eucalyptus  
EU71



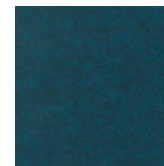
Carrot  
CA08



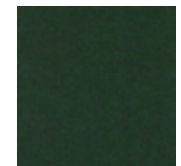
Loganberry  
LO77



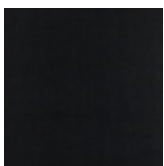
Granite  
GR62



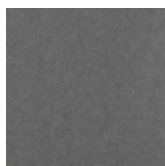
Denim  
DE09



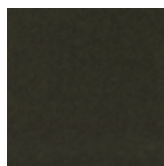
Kale  
KA12



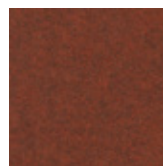
Piano Black  
PI24



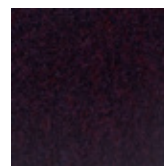
Slate  
SL27



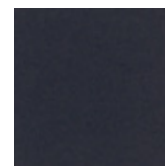
Nori  
NO76



Peppercorn  
PE22



Shiraz  
SH63



Flint  
FL64



Midnight  
MI16



For questions or additional product information,  
visit [acoufelt.com.au](http://acoufelt.com.au) or call 1800 626 462

# Sizes

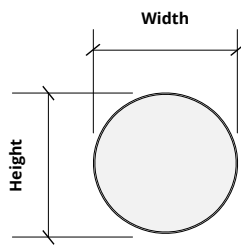
**Standard Heights** 152, 264, 305, 406 mm H

*Sizes based on shape. See below.*

**Standard Widths** 152, 305mm W

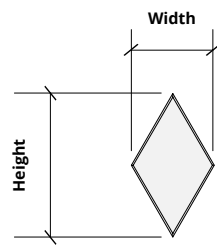
*Sizes based on shape. See below.*

## Circle



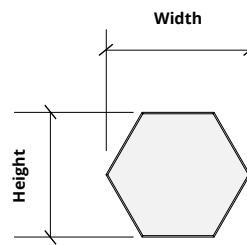
305 W x 305 H mm

## Diamond



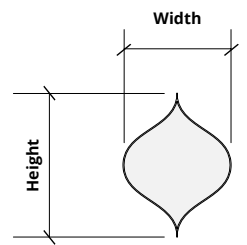
152 W x 264 H mm

## Hexagon



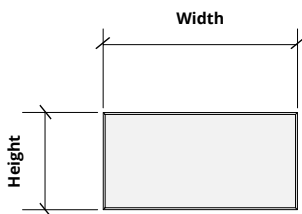
305 W x 264 H mm

## Ogee



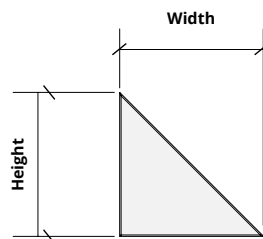
305 W X 406 H mm

## Rectangle



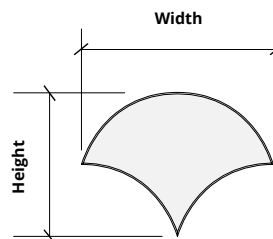
305 W x 152 H mm

## Right Triangle



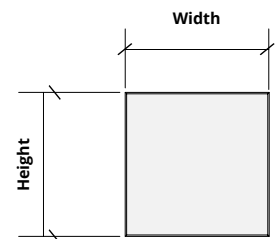
305 W x 305 H mm

## Scale



305 W x 152 H mm

## Square



305 W x 305 H mm



For questions or additional product information,  
visit [acoufelt.com.au](http://acoufelt.com.au) or call 1800 626 462

Shapes Wall Panels | April 2026

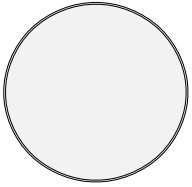
# How to Specify

## 2. Choose Tile Shape

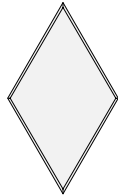
## 2. Choose Tile Size

## 3. Choose Colorway

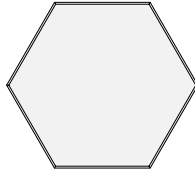
Select desired panel shape.



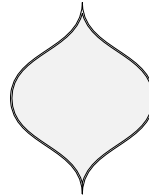
CIRCLE



DIAMOND



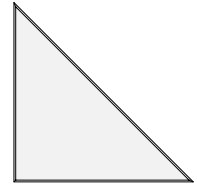
HEXAGON



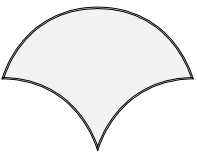
OGEE



RECTANGLE



RIGHT TRIANGLE



SCALE



SQUARE

## 1. Choose Tile Shape

## 2. Choose Tile Size

## 3. Choose Colorway

Each shape comes in small, medium and large size. See page 4 for complete list of sizes.

## 1. Choose Tile Shape

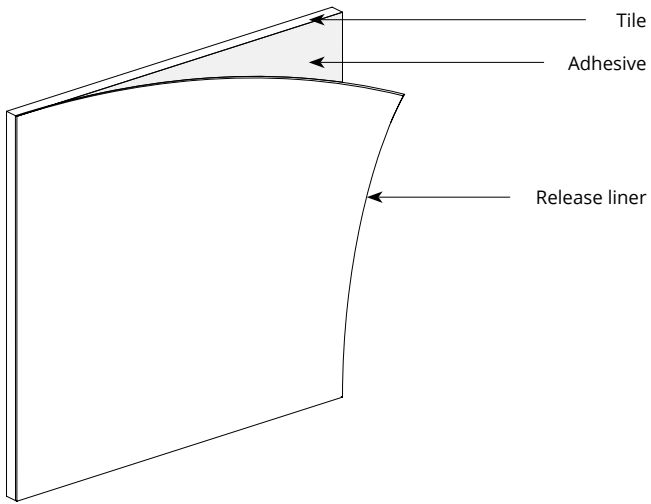
## 2. Choose Tile Size

## 3. Choose Colorway

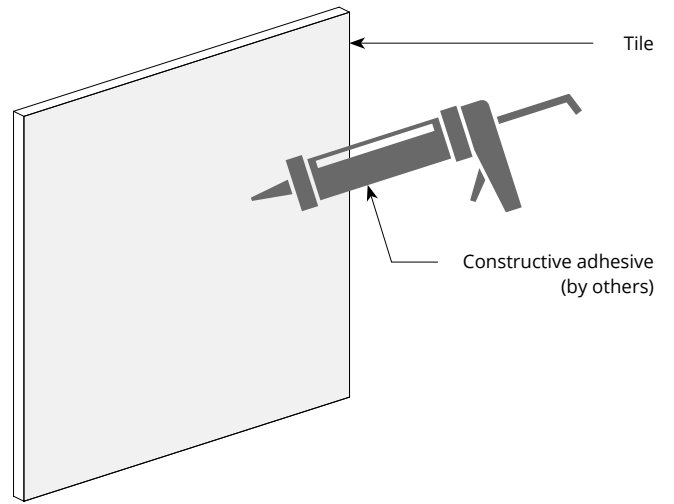
Select colorways on page 3.

# Mounting Methods

## Adhesive backing



## Construction adhesive

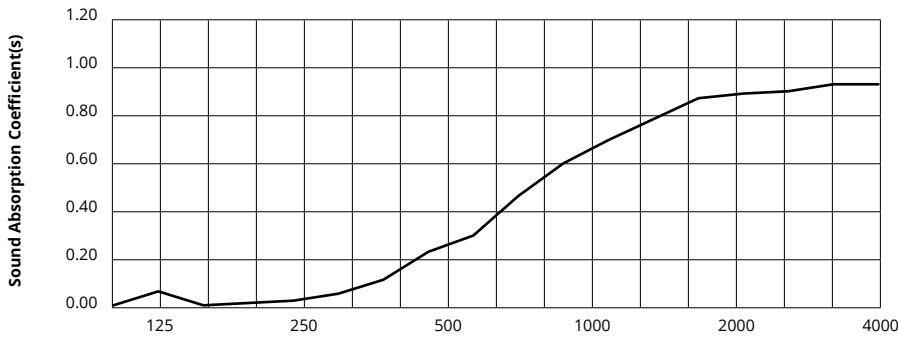


For questions or additional product information,  
visit [acoufelt.com.au](http://acoufelt.com.au) or call **1800 626 462**

Shapes Wall Panels | April 2026

# Acoustic Performance

<b>Test Method</b>	ISO 354-2006
<b>Install Method</b>	Type A
<b>Mounting Method</b>	No air gap
<b>Rating Method</b>	ISO 11654-1997
<b>Test Results</b>	<p><b>12mm</b> NRC 0.45 SAA 0.43</p> <p><b>24mm</b> NRC 0.60 SAA 0.55</p>




Frequency f (Hz)	125	250	500	1000	2000	4000	NRC
12mm	0.06	0.02	0.23	0.61	0.89	0.95	0.45

## What is a Noise Reduction Coefficient (NRC)?

You'll find the NRC rating in the specifications of all of our products. This acronym stands for Noise Reduction Coefficient, and is expressed as a single number, a rating that describes the degree to which acoustic products can absorb sound.

You can use NRC values to understand the overall performance of our acoustic wall and ceiling products. The higher the NRC, the better the product is at soaking up the sound.

*Performance Indices: Noise Reduction Coefficient (NRC) results represent the absorption coefficients measured at the one third octave bands at 125, 250, 500, 1000, 2000 and 4000 Hz rounded to the nearest 0.05. Acoustic testing has been performed according to the methods mentioned above. Customization of installation of the product could alter the results. Sound Absorption Average (SAA) indicates the absorption coefficient average for the twelve one-third octave bands ranging between 200 and 2500 Hz.*

 For questions or additional product information, visit [acoufelt.com.au](http://acoufelt.com.au) or call **1800 626 462**

Shapes Wall Panels | April 2026