

Skipping Stones Ceiling Clouds

Premier Collection

Skipping Stones is a collection of sculptural clouds that captivate the eye and transform its surroundings. Ideal for expansive, open areas, these clouds command attention while maintaining a sense of lightness. Gently rounded edges soften their grand presence, creating an inviting, almost floating effect that adds depth and dimension to any space. The interior is softly detailed, offering a refined look that can be enhanced with optional integrated lighting. Available in five distinct models, each design can stand alone or be hung in multiples to form a luminous, floating centerpiece that elevates any environment.

Specifications

| | |
|-----------------------|---|
| Surface | Ceiling |
| Material | FilaSorb™ polyester felt |
| Weight | 2400gsm |
| Standard Sizes | Heights: 254, 508mm H Widths: 686, 991, 1016, 1219mm W Lengths: 965, 1219, 1575, 1600, 2438mm L |



Skipping Stones Ceiling Clouds in Perwinkle, Marine, and Granite with Lighting

Technical

| | |
|-----------------------|--|
| NRC Rating | 1.90* |
| Fire Test | Test Results Pending |
| Water Sorption | ASTM C1104-2019 (A Modified) Water sorbed by weight: 0.20% (based on a 12mm thick panel) |
| Colorfastness | ISO 105-B02, 6-7 |

* Rating is estimated based on similar product designs. Comparison NRC results available upon request.

Details

| | |
|------------------|--|
| Lead Time | Refer to Product Lead Time Matrix |
| Origin | Australia |
| Warranty | Product: 20 years* Colorfastness: 20 years* |

* Conditions apply

Environmental

| | |
|---------------------------|---|
| Recycled Content | Minimum 60% |
| Energy | Generated using 40% solar energy |
| Indoor Air Quality | VOC less than/equal to 0.5mg/m3 |
| Recyclable | 100%* |
| Certifications | Declare Certification - LBC Red List Free (third-party verified) SCS Global Indoor Advantage Gold |

* PET is recyclable through participating partners.

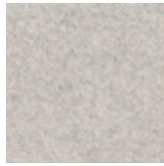


For questions or additional product information, visit [acoufelt.com.au](https://www.acoufelt.com.au) or call 1800 626 462

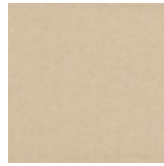
Skipping Stones Ceiling Clouds | April 2026



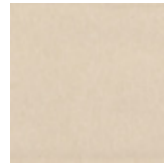
White
WH12



Milkyway
MI74



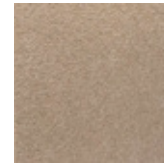
Ivory
IV11



Pearl
PE21



Valentine
VA70



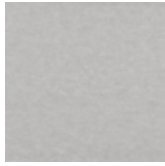
Quartz
QU67



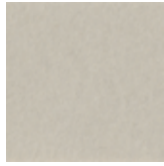
Stonewash
ST72



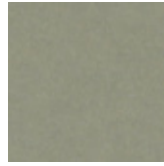
Sea Salt
SE57



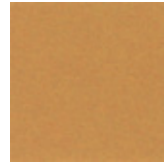
Platinum
PL04



Almond
AL55



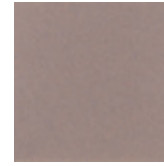
Pistachio
PI25



Turmeric
TU60



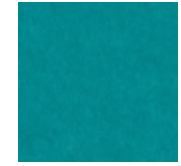
Flamingo
FL61



Amethyst
AM69



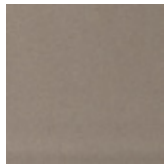
Periwinkle
PE23



Peacock
PE20



Metal
ME03



Mushroom
MU75



Celery
CE65



Wheat
WH68



Peach
PE19



Lilac
LI13



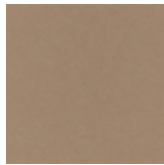
Marine
MA15



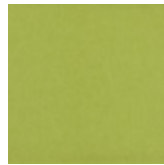
Sencha
SE58



Grey
GR02



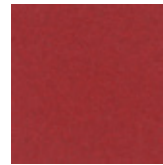
Umber
UM54



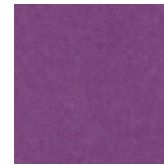
Wasabi
WA29



Popcorn
PO26



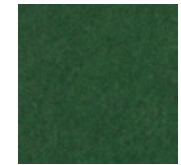
Currant
CU59



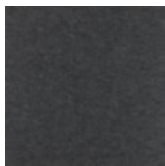
Berry
BE06



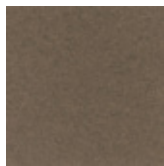
Azure
AZ05



Oregano
OR18



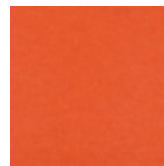
Charcoal
CH01



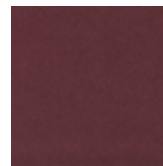
Walnut
WA56



Eucalyptus
EU71



Carrot
CA08



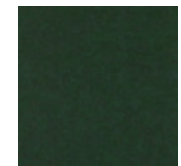
Loganberry
LO77



Granite
GR62



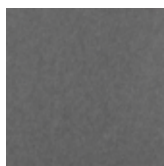
Denim
DE09



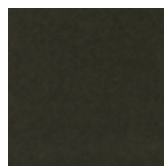
Kale
KA12



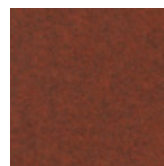
Piano Black
PI24



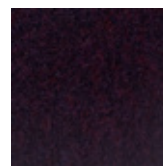
Slate
SL27



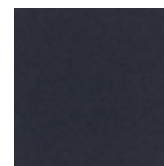
Nori
NO76



Peppercorn
PE22



Shiraz
SH63



Flint
FL64



Midnight
MI16

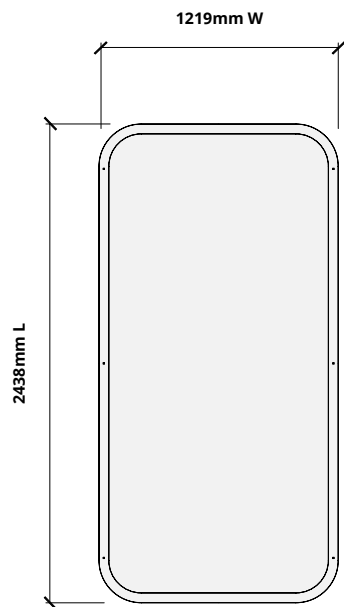


For questions or additional product information,
visit acoufelt.com.au or call 1800 626 462

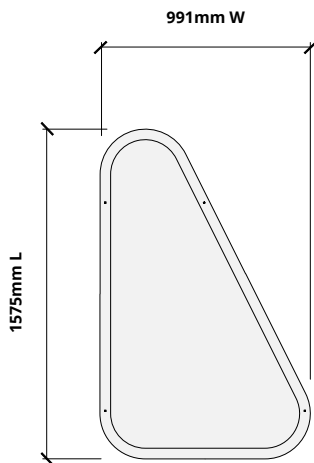
Sizes

Standard Sizes Height: 254, 508mm H
 Widths: 686, 991, 1016, 1219mm W
 Lengths: 965, 1219, 1575, 1600, 2438mm L

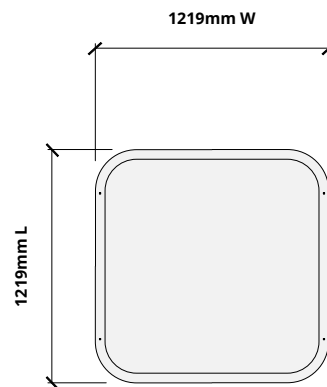
Plans



SKIPPING STONE A



SKIPPING STONE B

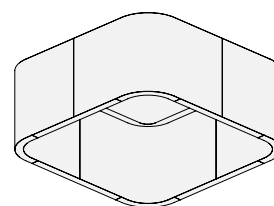
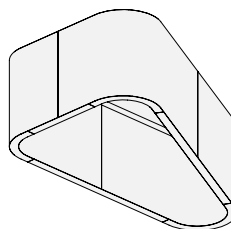
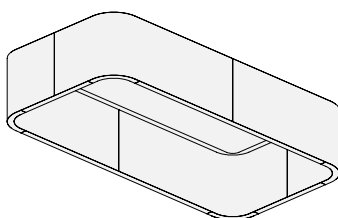


SKIPPING STONE C


Elevations



Perspectives



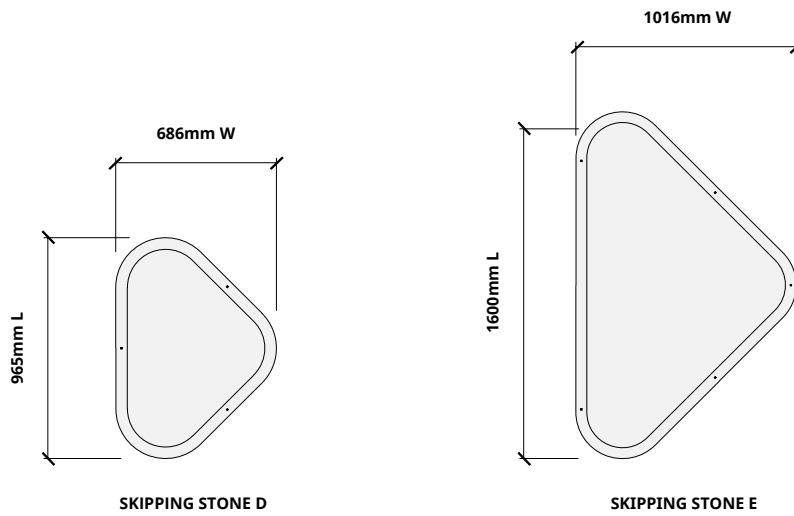
Models can be mixed and matched to create a desired pattern.

 For questions or additional product information, visit acoufelt.com.au or call 1800 626 462

Skipping Stones Ceiling Clouds | April 2026

Sizes (cont.)

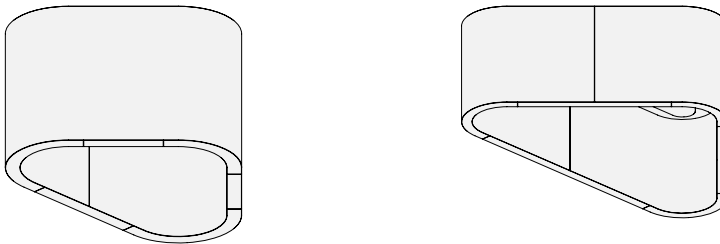
Plans



Elevations



Perspectives



Models can be mixed and matched to create a desired pattern.

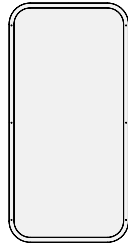
How to Specify

1. Choose Model

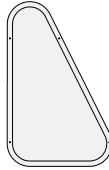
2. Choose Height

3. Choose Colorways

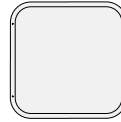
Skipping Stones Clouds are available in 5 models. You can mix and match the models to create your overall design.



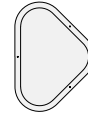
Skipping Stone A



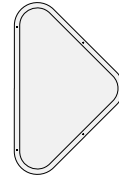
Skipping Stone B



Skipping Stone C



Skipping Stone D



Skipping Stone E

1. Choose Model

2. Choose Height

3. Choose Colorways

Clouds are available in two heights: 10" and 20". Multiple heights can be selected based on the overall desired design.

1. Choose Model

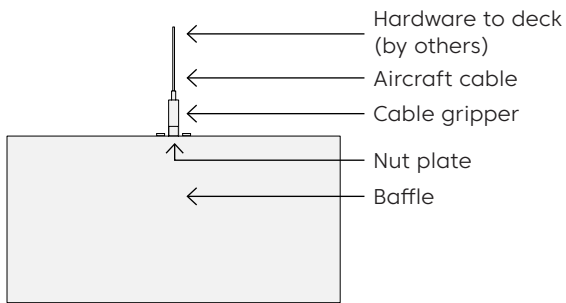
2. Choose Height

3. Choose Colorways

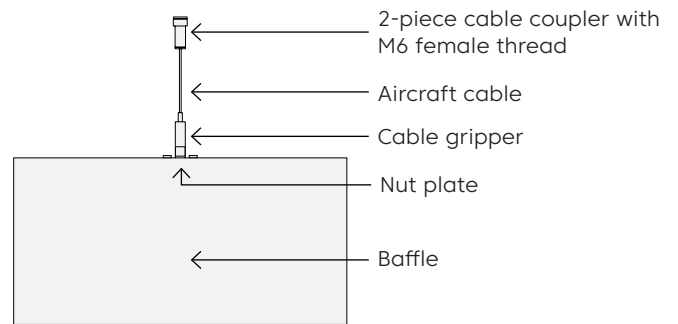
Select one or multiple colorways to achieve the overall desired design. See colorway choices on page 3.

Mounting Methods

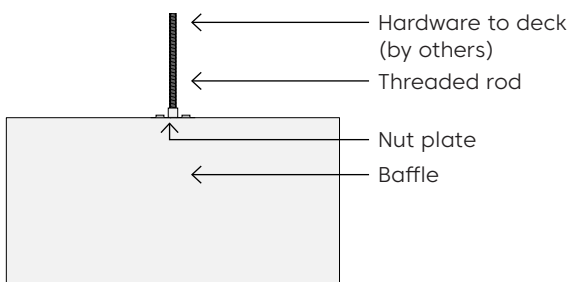
Cable



Cable to deck

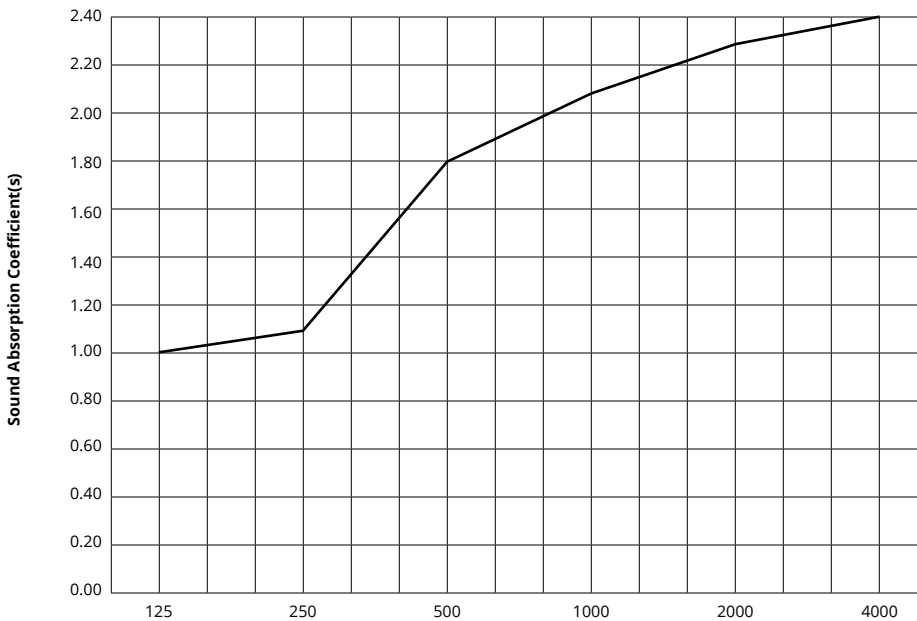


Threaded rod



Acoustic Performance

| | |
|-----------------------|----------------|
| Test Method | ASTM C423-17 |
| Install Method | Type A |
| Rating Method | ISO 11654-2007 |
| Test Results | NRC 1.90 |




| Frequency f (Hz) | 125 | 250 | 500 | 1000 | 2000 | 4000 | NRC |
|------------------|------|------|------|------|------|------|------|
| 12mm | 1.00 | 1.30 | 1.80 | 2.10 | 2.30 | 2.40 | 1.90 |

What is a Noise Reduction Coefficient (NRC)?

You'll find the NRC rating in the specifications of all of our products. This acronym stands for Noise Reduction Coefficient, and is expressed as a single number, a rating that describes the degree to which acoustic products can absorb sound.

You can use NRC values to understand the overall performance of our acoustic wall and ceiling products. The higher the NRC, the better the product is at soaking up the sound.

Performance Indices: Noise Reduction Coefficient (NRC) results represent the absorption coefficients measured at the one third octave bands at 125, 250, 500, 1000, 2000 and 4000 Hz rounded to the nearest 0.05. Acoustic testing has been performed according to the methods mentioned above. Customization of installation of the product could alter the results. Sound Absorption Average (SAA) indicates the absorption coefficient average for the twelve one-third octave bands ranging between 200 and 2500 Hz.

 For questions or additional product information, visit [acoufelt.com.au](https://www.acoufelt.com.au) or call 1800 626 462

Skipping Stones Ceiling Clouds | April 2026