



## SoftenUp, Foothill Ceiling Frames

Premier Collection

SoftenUp™ modular ceiling tiles create a warm and welcoming atmosphere in any space. Foothill is designed for effortless installation and seamlessly fits into T-grid drop-ceiling systems. Each tile is comprised of a series of 2" W linear slats. Foothill can be specified from three sizes and multiple colors allowing for more creative and personalized installations.

## Specifications

<b>Surface</b>	Ceiling	
<b>Material</b>	FilaSorb™ polyester felt	
<b>Weight</b>	0.49 lb./ft <sup>2</sup> (±10%)	
<b>Standard Sizes</b>	<b>Slat Profiles</b>	<b>Backer Panels</b>
	50mm W x 75mmH	600 W x 600mm L 600 W x 1200mm L
<b>Compatible T-grid</b>	<b>Type</b>	<b>Layout</b>
	24mm Flat	Standard 600mm x 600mm
	15mm Flat	Standard 600mm x 600mm



SoftenUp, Foothill Ceiling Frames in Slate

## Technical

<b>NRC Rating</b>	0.95*
<b>Fire Test</b>	AS ISO 9705:2033 (according to AS 5637.7:2015 requirements) Group 1 0.93
<b>Water Sorption</b>	ASTM C1104-2019 (A Modified) Water sorbed by weight: 0.20% (based on a 12mm thick panel)
<b>Colorfastness</b>	ISO 105-B02, 6-7

\* Test results available upon request.

## Details

<b>Lead Time</b>	Refer to Product Lead Time Matrix
<b>Origin</b>	Australia
<b>Warranty</b>	Product: 20 years*
	Colorfastness: 20 years*

\* Conditions apply

## Environmental

<b>Recycled Content</b>	Minimum 60%
<b>Energy</b>	Generated using 40% solar energy
<b>Indoor Air Quality</b>	VOC less than/equal to 0.5mg/m <sup>3</sup>
<b>Recyclable</b>	100%*
<b>Certifications</b>	Environmental Product Declaration
	Declare Certification - LBC Red List Free (third-party verified)
	SCS Global Indoor Advantage Gold

\* PET is recyclable through participating partners.

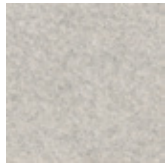


For questions or additional product information,  
visit [acoufelt.com.au](http://acoufelt.com.au) or call 1800 626 462

SoftenUp, Foothill Ceiling Frames | April 2026



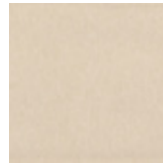
White  
WH12



Milkyway  
MI74



Ivory  
IV11



Pearl  
PE21



Valentine  
VA70



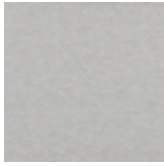
Quartz  
QU67



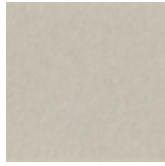
Stonewash  
ST72



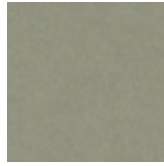
Sea Salt  
SE57



Platinum  
PL04



Almond  
AL55



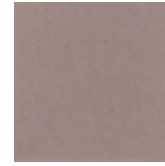
Pistachio  
PI25



Turmeric  
TU60



Flamingo  
FL61



Amethyst  
AM69



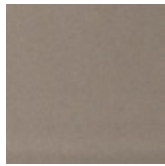
Periwinkle  
PE23



Peacock  
PE20



Metal  
ME03



Mushroom  
MU75



Celery  
CE65



Wheat  
WH68



Peach  
PE19



Lilac  
LI13



Marine  
MA15



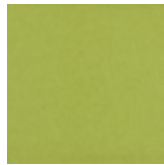
Sencha  
SE58



Grey  
GR02



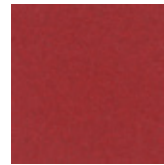
Umber  
UM54



Wasabi  
WA29



Popcorn  
PO26



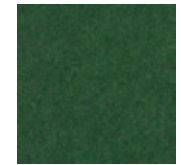
Currant  
CU59



Berry  
BE06



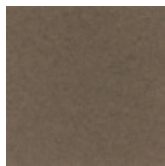
Azure  
AZ05



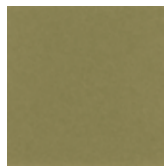
Oregano  
OR18



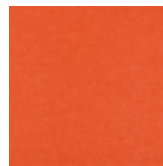
Charcoal  
CH01



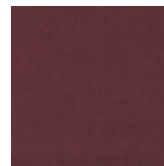
Walnut  
WA56



Eucalyptus  
EU71



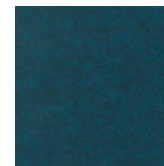
Carrot  
CA08



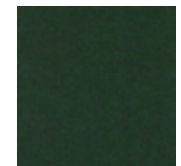
Loganberry  
LO77



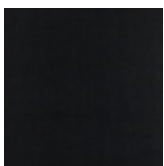
Granite  
GR62



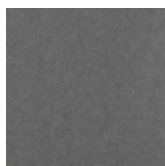
Denim  
DE09



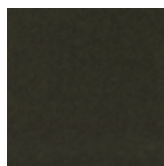
Kale  
KA12



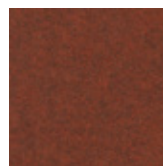
Piano Black  
PI24



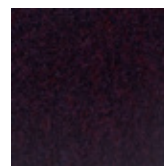
Slate  
SL27



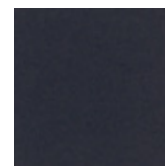
Nori  
NO76



Peppercorn  
PE22



Shiraz  
SH63



Flint  
FL64



Midnight  
MI16



For questions or additional product information,  
visit [acoufelt.com.au](http://acoufelt.com.au) or call 1800 626 462

# How to Specify

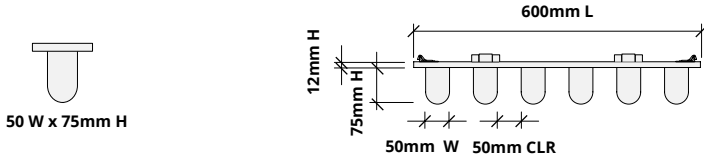
## 1. Choose Slat Size

## 2. Choose Backer Panel Size

## 3. Choose Colorways

## 4. Optional Corner Panel

Slats are available in one size:



Drawings show spacing for 2" W slats. Spacing for 4" W slats will differ. Product ships assembled.

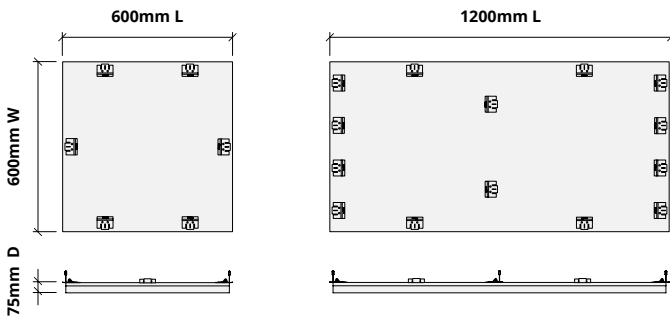
## 1. Choose Slat Size

## 2. Choose Backer Panel Size

## 3. Choose Colorways

## 4. Optional Corner Panel

Backer panels are available in two sizes.



## 1. Choose Slat Size

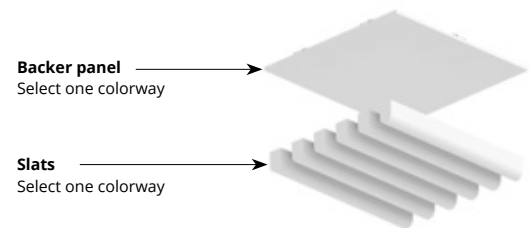
## 2. Choose Backer Panel Size

## 3. Choose Colorways

## 4. Optional Corner Panel

Select one colorway for your slats and one colorway for your backer panel.  
See colorway choices on page 3.

If you're specifying dark colored backer panels, we recommend dark drop ceiling grids (not provided).



# How to Specify (cont.)

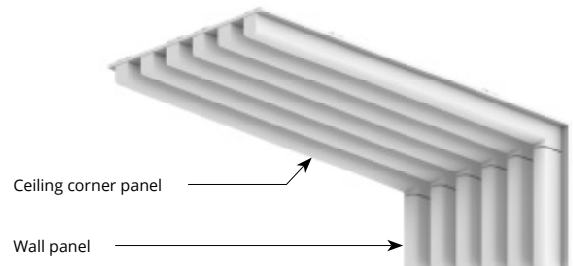
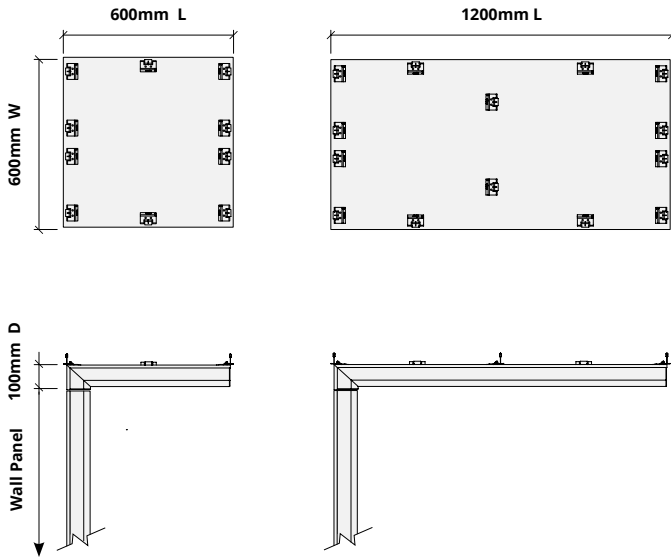
## 1. Choose Slat Size

## 2. Choose Backer Panel Size

## 3. Choose Colorways

## 4. Optional Corner Panel

SoftenUp acoustical ceiling panels can be seamlessly integrated with corresponding wall panels by specifying the corresponding corner piece.



See corresponding SoftenUp, Foothills wall panel specification sheet for additional information.

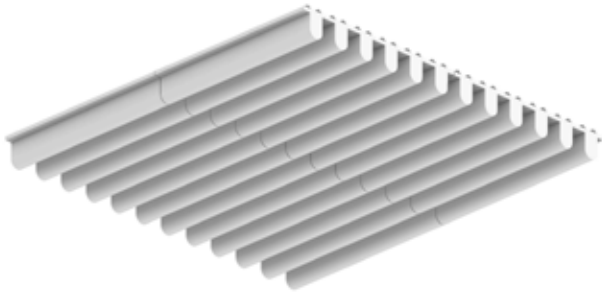


For questions or additional product information, visit [acoufelt.com.au](http://acoufelt.com.au) or call 1800 626 462

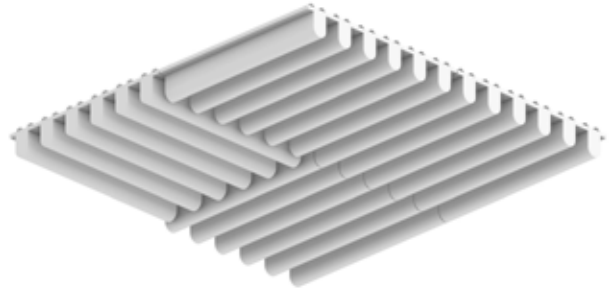
SoftenUp, Foothill Ceiling Frames | April 2026

# Recommended Layouts

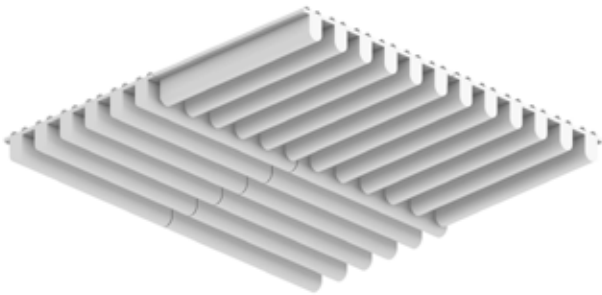
Layout 1



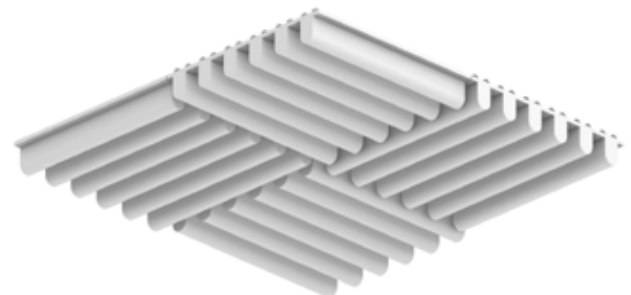
Layout 2



Layout 3

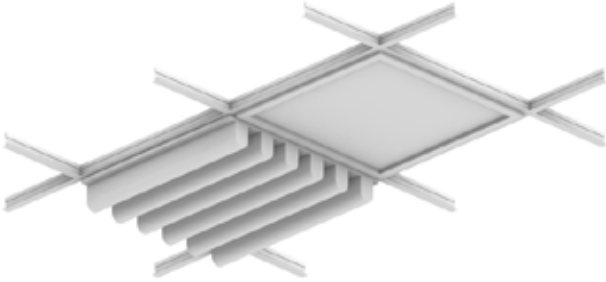


Layout 4

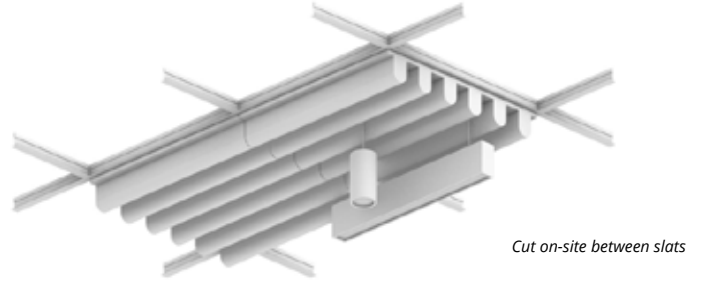


# Lighting Coordination

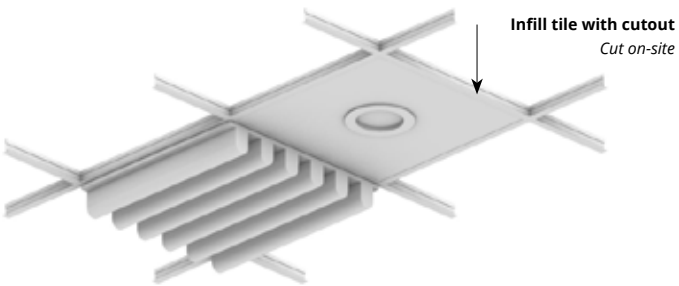
600mm x 600mm, 600mm x 1200mm Grid light



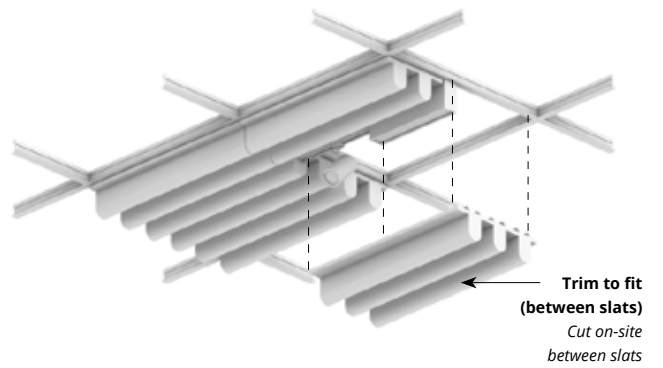
Drop pendant light



Recessed light

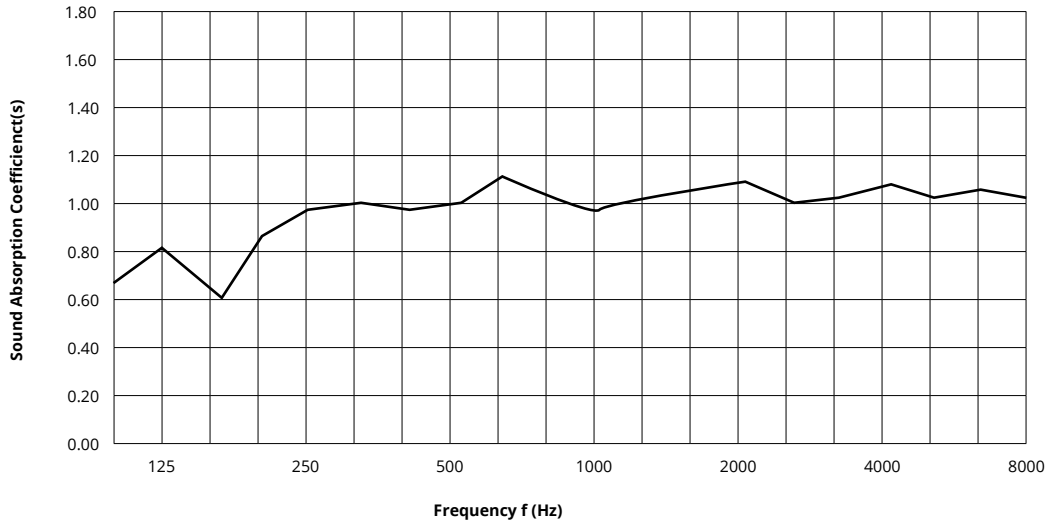


Grid mounted light (track, pendant)



# Acoustic Performance

<b>Test Method</b>	ASTM E795
<b>Install Method</b>	Type E-400
<b>Rating Method</b>	ASTM C423
<b>Mounting Method</b>	50mm W x 76mm H slat on 12mm backer with 400mm air gap
<b>Test Results</b>	NRC 0.95 SAA 0.96




Frequency f (Hz)	125	250	500	1000	2000	4000	NRC
12mm	0.67	0.86	0.96	1.02	1.04	1.00	0.95

## What is a Noise Reduction Coefficient (NRC)?

You'll find the NRC rating in the specifications of all of our products. This acronym stands for Noise Reduction Coefficient, and is expressed as a single number, a rating that describes the degree to which acoustic products can absorb sound.

You can use NRC values to understand the overall performance of our acoustic wall and ceiling products. The higher the NRC, the better the product is at soaking up the sound.

*Performance Indices: Noise Reduction Coefficient (NRC) results represent the absorption coefficients measured at the one third octave bands at 125, 250, 500, 1000, 2000 and 4000 Hz rounded to the nearest 0.05. Acoustic testing has been performed according to the methods mentioned above. Customization of installation of the product could alter the results. Sound Absorption Average (SAA) indicates the absorption coefficient average for the twelve one-third octave bands ranging between 200 and 2500 Hz.*

 For questions or additional product information, visit [acoufelt.com.au](http://acoufelt.com.au) or call 1800 626 462

SoftenUp, Foothill Ceiling Frames | April 2026

## Suspension

The SoftenUp ceiling tiles are designed to connect to standard drop-ceiling grid systems via a series of tabs integrated into the design. No additional hardware is required for standard installation. Seismic zones may require additional considerations (see note on seismic).

## Life Safety

The panels can be trimmed on-site, using a sharp utility knife, to accommodate any existing signage and/or wayfinding markings. Cut-outs must occur in 2" gap between slats. All fixtures must be supported independent of tiles.

*\* Panels cut on-site may require additional support.*

## Weight

- 76mm H slat weight = 9.7kg per m<sup>2</sup>
- 25mm H slat weight = 6.1kg per m<sup>2</sup>

## Clearance/Tolerance

When installed, SoftenUp tiles have a consistent 1/8" reveal to account for any on-site tolerance concerns. Panels have a method for tile alignment integrated into the design.

## MEP/FP

The panels can be trimmed on-site, using a sharp utility knife, to accommodate any MEP/FP fixtures. These include, but are not limited to, drop-in lighting and diffusers, recessed lighting, linear diffusers, concealed and exposed fire sprinklers, and A/V equipment. Please consult all local and municipal codes, as well as a licensed engineer, for full compliance requirements. Cut-outs must occur in 2" gap between slats. All fixtures must be supported independent of tiles.

*\*Panels cut on-site may require additional support.*

## Ceiling Access

Panels with an integrated folding access tab are available upon request. These folding tabs allow for the removal of individual tiles to access ceiling systems.

## Seismic

SoftenUp ceiling tiles can provide seismic compliance through a mechanical direct screw attachment through the panel to the grid system, or an individual tile off to building structure. Please consult all local and municipal codes, as well as a licensed engineer, for full compliance requirements.

