



Solid Wall Panels

Premier Collection

Transform bustling meeting areas into oases of tranquility. Elevate performance spaces to new heights of clarity and precision. With our acoustic wall panels, silence becomes an art form, and every space becomes a sanctuary of sound.

Our panels provide customizable solutions to suit every acoustic challenge. Hang a select few to target trouble spots or blanket your walls for comprehensive sound control – the choice is yours.

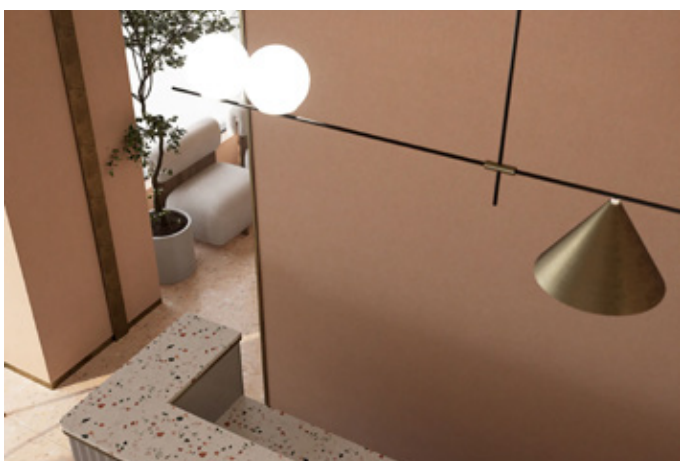
Specifications

Surface	Wall
Material	Filasorb™ polyester felt
Weight	12mm, 2400gsm - Solid colour panel 24mm, 4800gsm - Solid colour panel 25mm, 3900gsm - Face colour only
Standard Sizes	1200 x 2440mm or 1220 x 2800mm

Technical

NRC Rating	12mm: 0.45* 24mm: 0.60* 25mm: 0.75*
Fire Test	ASTM E84, Class A CAN/ULC-S102 Flame spread index: 15 Smoke developed index: 200
Colorfastness	ISO 105-B02, 6-7

* Test results available upon request.



Solid Wall Panel in Quartz

Details

Lead Time	Refer to Product Lead Time Matrix
Origin	Australia
Warranty	Product: 20 years* Colorfastness: 20 years*

* Conditions apply

Environmental

Recycled Content	Minimum 60%
Energy	Generated using 40% solar energy
Indoor Air Quality	VOC less than/equal to 0.5mg/m3
Recyclable	100%*
Certifications	Environmental Product Declaration Declare Certification - LBC Red List Free (third-party verified) SCS Global Indoor Advantage Gold

* PET is recyclable through participating partners.

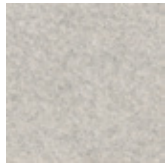


For questions or additional product information, visit [acoufelt.com.au](https://www.acoufelt.com.au) or call 1800 626 426

Solid Wall Panels | March 2026



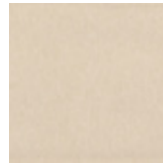
White
WH12



Milkyway
MI74



Ivory
IV11



Pearl
PE21



Valentine
VA70



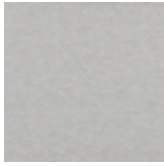
Quartz
QU67



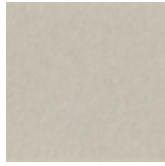
Stonewash
ST72



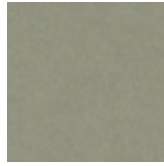
Sea Salt
SE57



Platinum
PL04



Almond
AL55



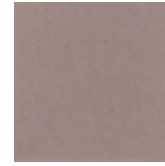
Pistachio
PI25



Turmeric
TU60



Flamingo
FL61



Amethyst
AM69



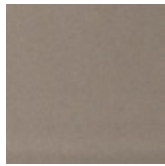
Periwinkle
PE23



Peacock
PE20



Metal
ME03



Mushroom
MU75



Celery
CE65



Wheat
WH68



Peach
PE19



Lilac
LI13



Marine
MA15



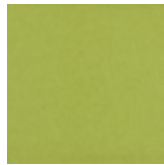
Sencha
SE58



Grey
GR02



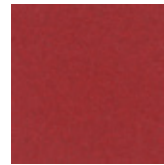
Umber
UM54



Wasabi
WA29



Popcorn
PO26



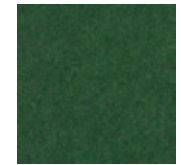
Currant
CU59



Berry
BE06



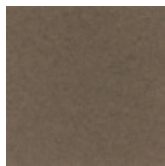
Azure
AZ05



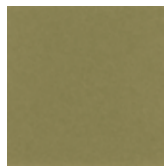
Oregano
OR18



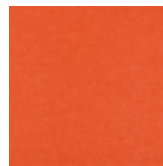
Charcoal
CH01



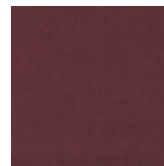
Walnut
WA56



Eucalyptus
EU71



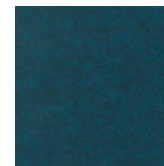
Carrot
CA08



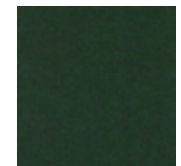
Loganberry
LO77



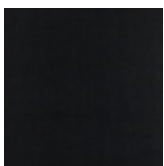
Granite
GR62



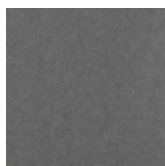
Denim
DE09



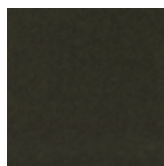
Kale
KA12



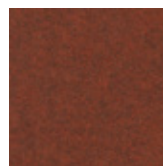
Piano Black
PI24



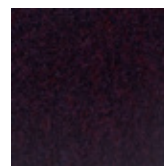
Slate
SL27



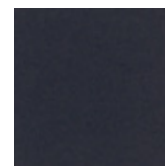
Nori
NO76



Peppercorn
PE22



Shiraz
SH63



Flint
FL64



Midnight
MI16

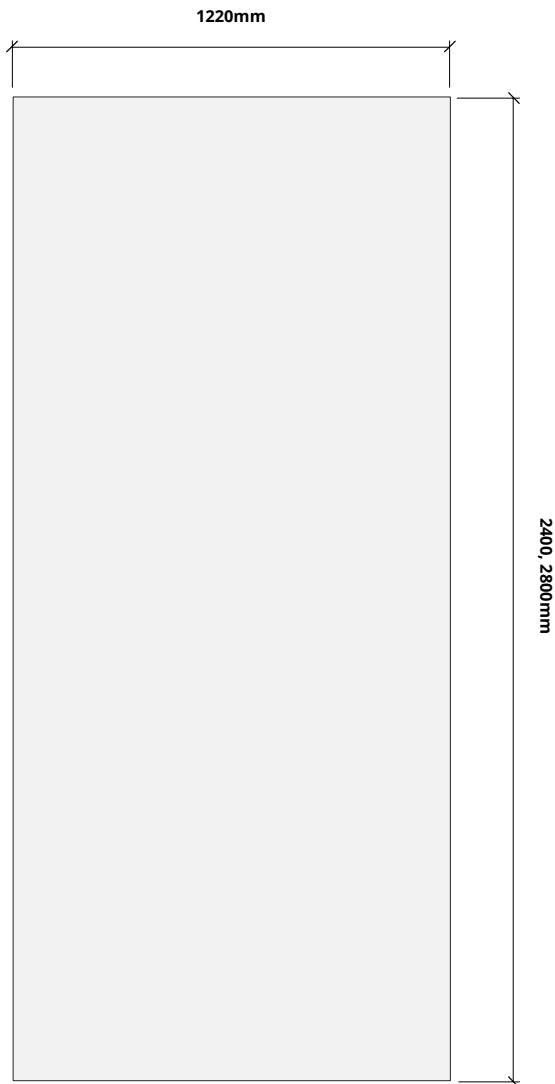


For questions or additional product information,
visit acoufelt.com.au or call 1800 626 426

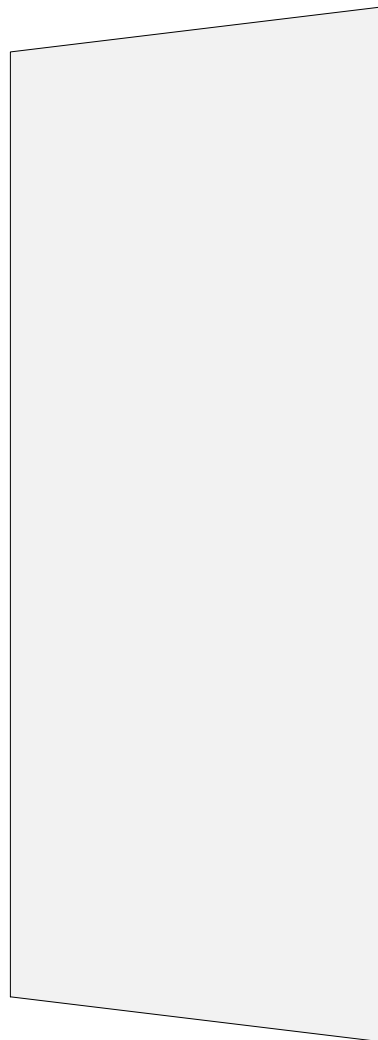
Sizes

Standard Sizes 1220 x 2440mm
1220 x 2800mm

Plan



Perspective



How to Specify

1. Choose Panel Weight

2. Choose Panel Size

3. Choose Colorway

Determine preferred weight based on acoustical needs

1. Choose Panel Weight

2. Choose Panel Size

3. Choose Colorway

Determine preferred width and height.

1. Choose Panel Weight

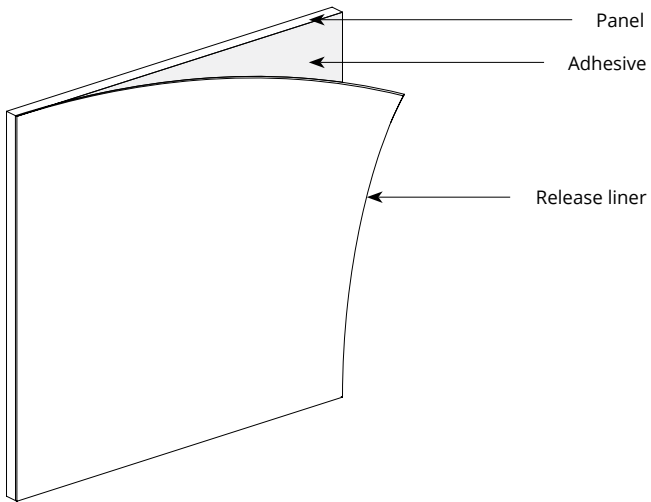
2. Choose Panel Size

3. Choose Colorway

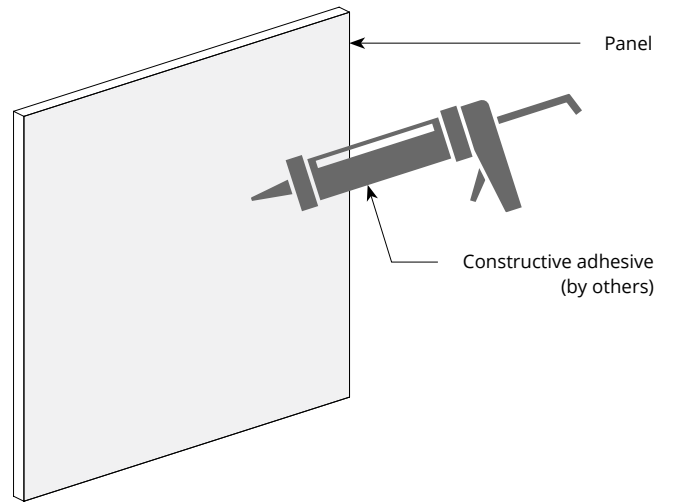
Select a color for the backer panel and one or multiple colors for block or seams. See colorways on pages 3 and 4.

Mounting Methods

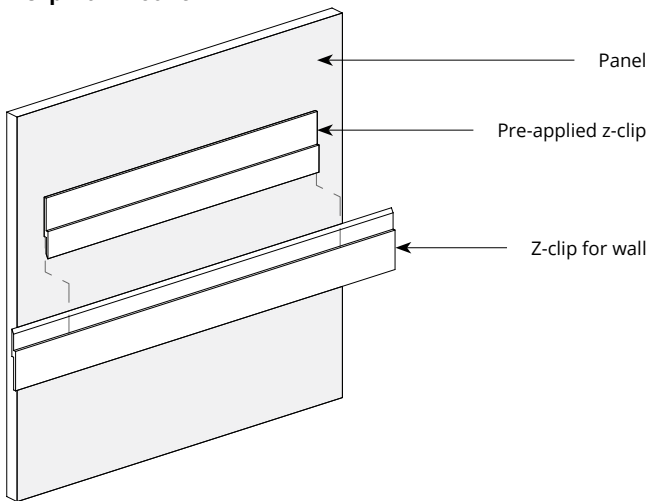
Adhesive backing



Construction adhesive



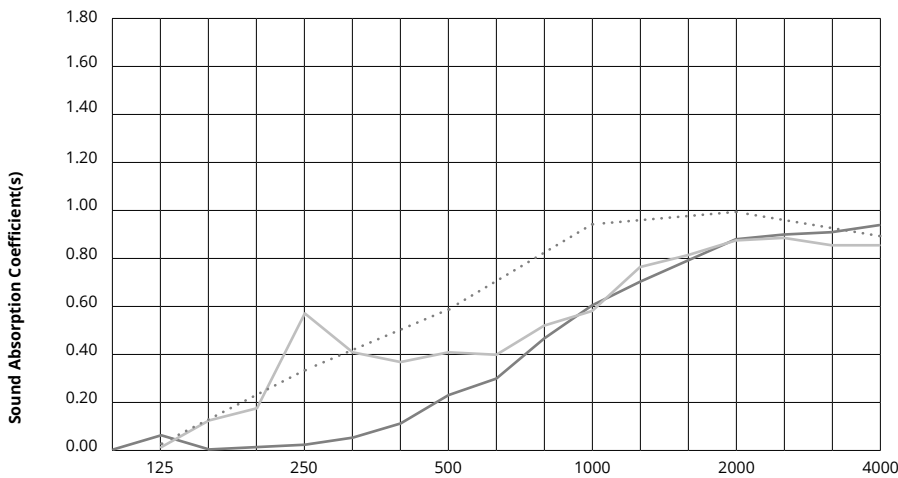
Z-clip wall mount



**For wall mount applications only.*

Acoustic Performance

Test Method	24, 25mm ASTM E795-16 12mm ASTM C423-09a
Install Method	A
Rating Method	ISO 11654-2002
Test Results	12mm: 0.45, no air gap 24mm: 0.60, no air gap 25mm: 0.75, no air gap




	Frequency f (Hz)	125	250	500	1000	2000	4000	NRC
	12mm	0.06	0.02	0.23	0.61	0.89	0.95	0.45
	24mm	0.02	0.57	0.41	0.58	0.87	0.85	0.60
	25mm	0.08	0.27	0.64	1.00	0.97	0.96	0.70

What is a Noise Reduction Coefficient (NRC)?

You'll find the NRC rating in the specifications of all of our products. This acronym stands for Noise Reduction Coefficient, and is expressed as a single number, a rating that describes the degree to which acoustic products can absorb sound.

You can use NRC values to understand the overall performance of our acoustic wall and ceiling products. The higher the NRC, the better the product is at soaking up the sound.

Performance Indices: Noise Reduction Coefficient (NRC) results represent the absorption coefficients measured at the one third octave bands at 125, 250, 500, 1000, 2000 and 4000 Hz rounded to the nearest 0.05. Acoustic testing has been performed according to the methods mentioned above. Customization of installation of the product could alter the results. Sound Absorption Average (SAA) indicates the absorption coefficient average for the twelve one-third octave bands ranging between 200 and 2500 Hz.

 For questions or additional product information, visit acoufelt.com.au or call 1800 626 426

Solid Wall Panels | March 2026