



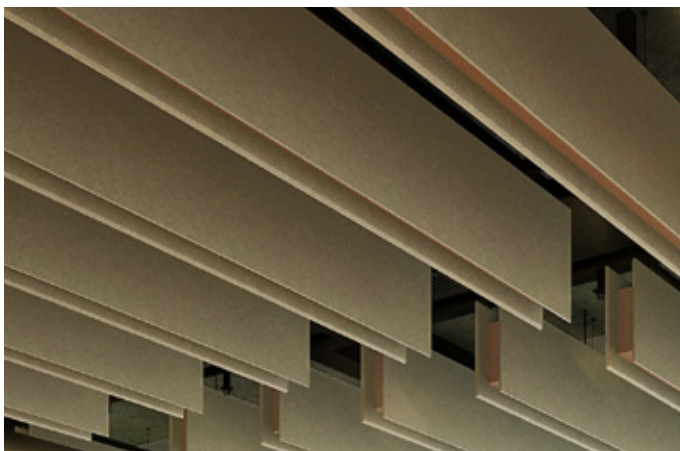
Stack Ceiling Baffles

Premier Collection

Stack Ceiling Baffles have a unique design that adds more dimension and color to any space. This product is available in a wide range of standard sizes and allows the specification in one or two colors. One color for the exterior planes and another for the interior structure that connects the two planes. This multi-dimensional design provides infinite creative freedom. Its personalization capability, along with increased sound absorption, makes Stack both effective at improving acoustic comfort and versatile in appearance.

Specifications

Surface	Ceiling
Material	FilaSorb™ polyester felt
Weight	2400gsm
Standard Sizes	Height: 152mm up to 508mm H (25mm increments) Depth: 76, 102mm D Length: 305mm up to 2743mm L (152mm increments), 2794mm L



Stack Ceiling Baffles in Celery and Quartz

Technical

NRC Rating	1.65*
Fire Test	Test Results Pending
Water Sorption	ASTM C1104-2019 (A Modified) Water sorbed by weight: 0.20% (based on a 12mm thick panel)
Colorfastness	ISO 105-B02, 6-7

* Test results available upon request

Details

Lead Time	Refer to Product Lead Time Matrix
Origin	Australia
Warranty	Product: 20 years* Colorfastness: 20 years*

* Conditions apply

Environmental

Recycled Content	Minimum 60%
Energy	Generated using 40% solar energy
Indoor Air Quality	VOC less than/equal to 0.5mg/m3
Recyclable	100%*
Certifications	Environmental Product Declaration Declare Certification - LBC Red List Free (third-party verified) SCS Global Indoor Advantage Gold

* PET is recyclable through participating partners

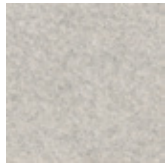


For questions or additional product information, visit acoufelt.com.au or call 1800 626 462

Stack Ceiling Baffles | May 2026



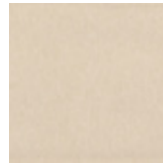
White
WH12



Milkyway
MI74



Ivory
IV11



Pearl
PE21



Valentine
VA70



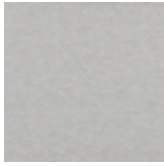
Quartz
QU67



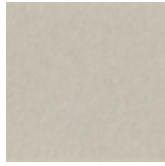
Stonewash
ST72



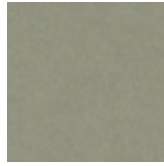
Sea Salt
SE57



Platinum
PL04



Almond
AL55



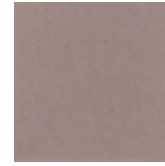
Pistachio
PI25



Turmeric
TU60



Flamingo
FL61



Amethyst
AM69



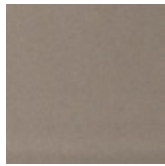
Periwinkle
PE23



Peacock
PE20



Metal
ME03



Mushroom
MU75



Celery
CE65



Wheat
WH68



Peach
PE19



Lilac
LI13



Marine
MA15



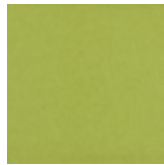
Sencha
SE58



Grey
GR02



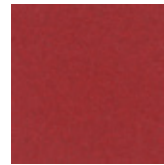
Umber
UM54



Wasabi
WA29



Popcorn
PO26



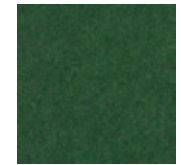
Currant
CU59



Berry
BE06



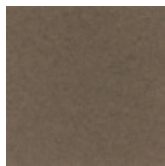
Azure
AZ05



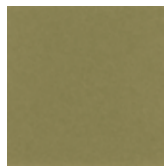
Oregano
OR18



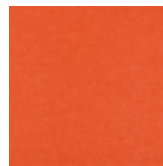
Charcoal
CH01



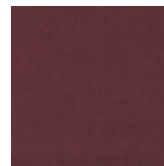
Walnut
WA56



Eucalyptus
EU71



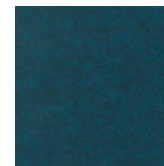
Carrot
CA08



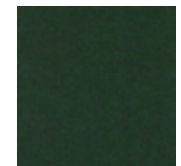
Loganberry
LO77



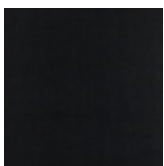
Granite
GR62



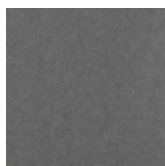
Denim
DE09



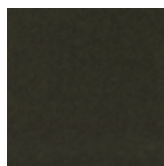
Kale
KA12



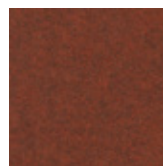
Piano Black
PI24



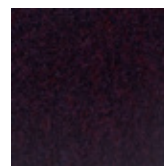
Slate
SL27



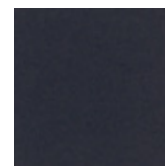
Nori
NO76



Peppercorn
PE22



Shiraz
SH63



Flint
FL64



Midnight
MI16

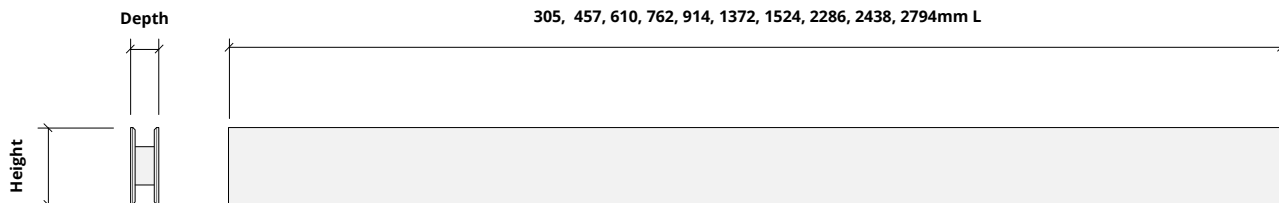


For questions or additional product information,
visit acoufelt.com.au or call 1800 626 462

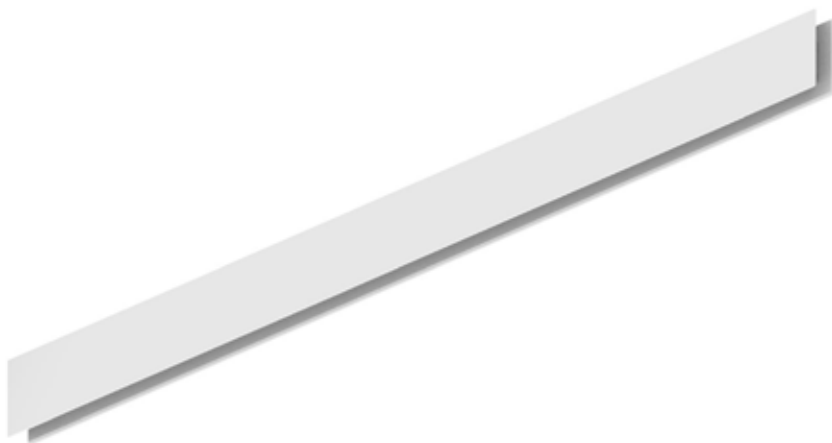
Sizes

Standard Sizes Height: 152mm up to 508mm H (25mm increments)
 Depth: 3, 102mm D
 Length: 305mm up to 2743mm L (152mm increments), w L
 Custom sizes available

Elevation

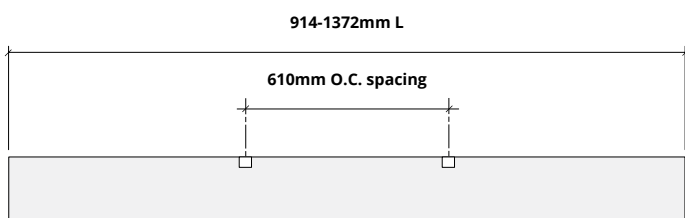
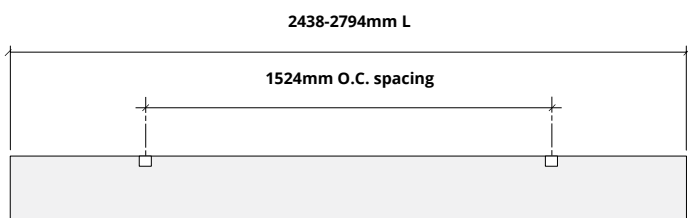
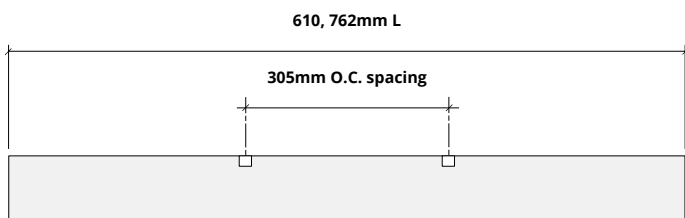
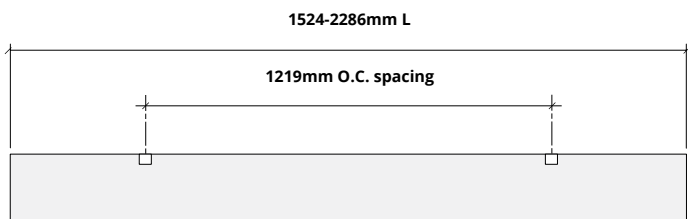
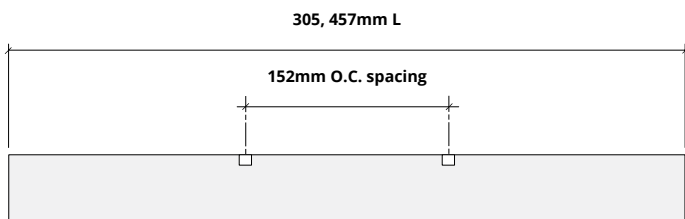


Perspective



Hardware Spacing

305, 457mm L	152mm on center spacing
610, 762mm L	305mm on center spacing
914-1372mm L	610mm on center spacing
1524-2286mm L	1219mm on center spacing
2438-2794mm L	1524mm on center spacing



How to Specify

1. Choose Sizes

2. Choose Colorways

3. Choose Mounting Method

Baffles come in a range of heights, depths and lengths. See page 4 for a complete list of sizes.

1. Choose Sizes

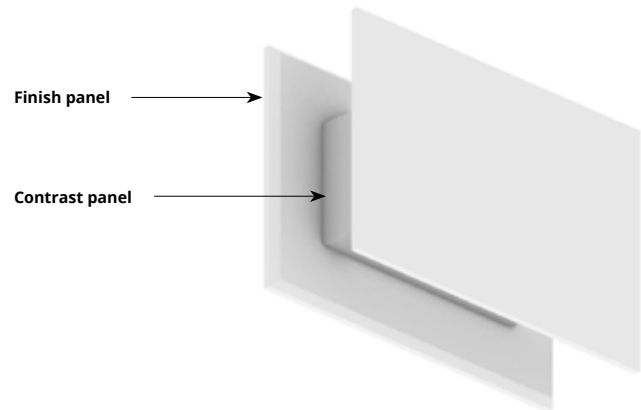
2. Choose Colorway

3. Choose Mounting Method

To specify colorways, select finish panel and contrast panel color.



Almond + Quartz = AL55 + SH63



Ships assembled

1. Choose Sizes

2. Choose Colorway

3. Choose Mounting Method

There are several mounting methods available. Choose one that works best for your project needs and preferred aesthetic.

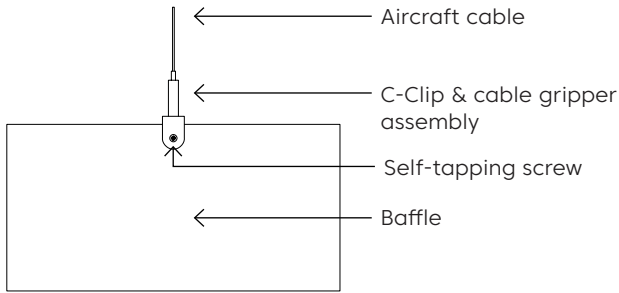


For questions or additional product information,
visit [acoufelt.com.au](https://www.acoufelt.com.au) or call 1800 626 462

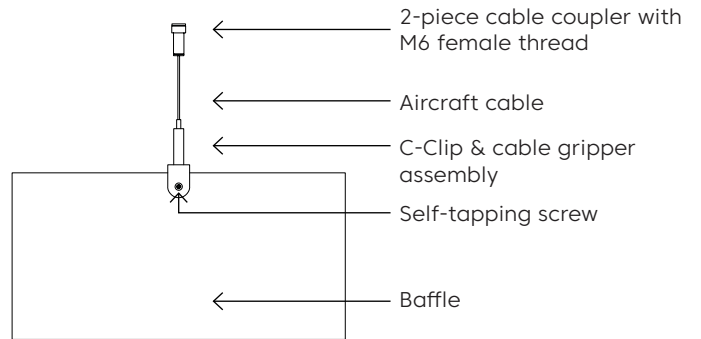
Stack Ceiling Baffles | May 2026

Mounting Methods

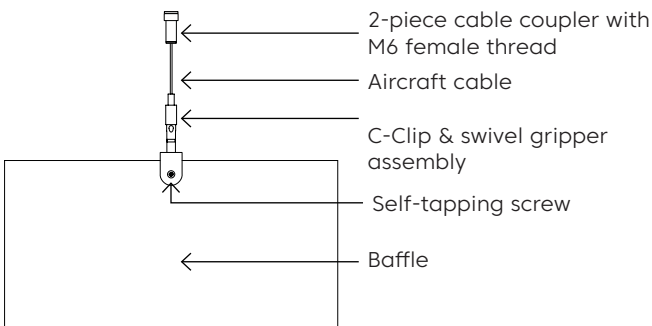
Cable



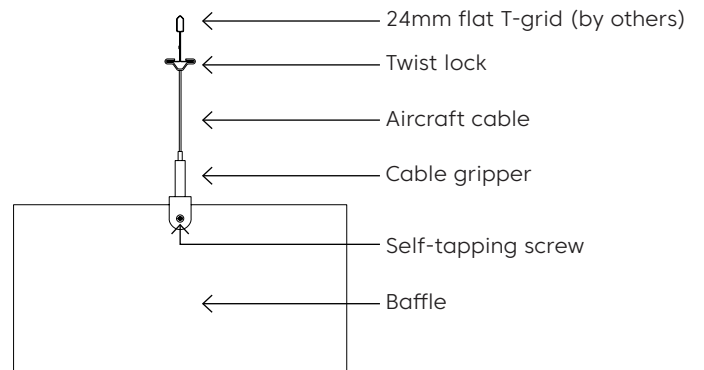
Cable to deck



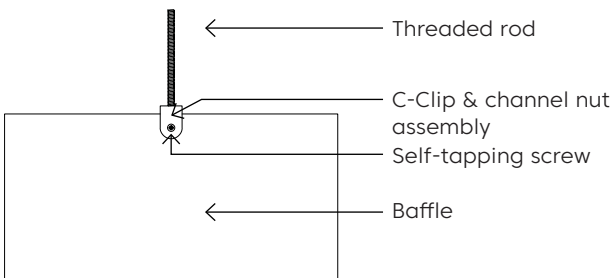
Swivel cable to deck



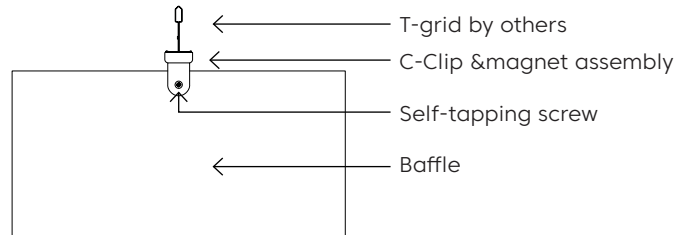
Cable to T-grid



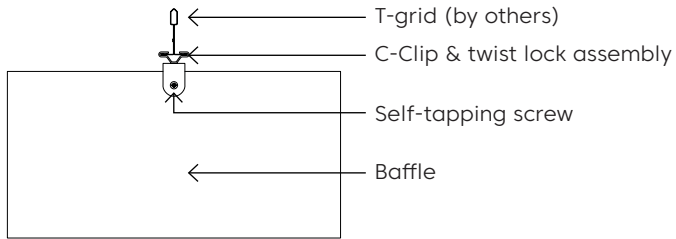
Threaded Rod



Magnet to T-grid

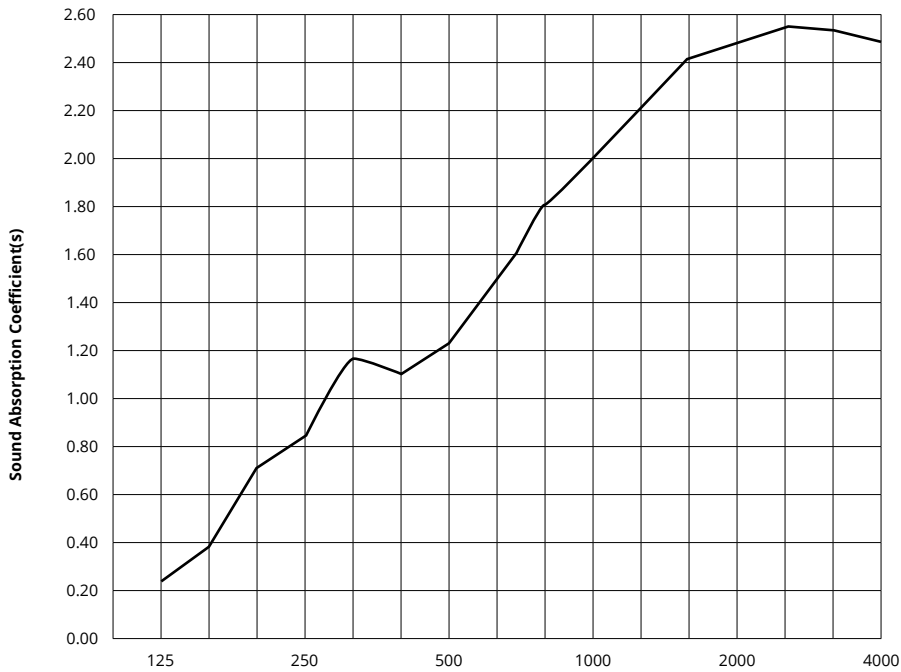


Twist lock to T-grid



Acoustic Performance

Test Method	ASTM E795-16
Install Method	J-600
Rating Method	ASTM C423-17
Mounting Method	Sample tested 5 baffles 2794mm L x 305mm H x 76mm D, hanging 600mm from floor and 152mm from each other
Test Results	NRC 1.65 SAA 1.68



Frequency f (Hz)	125	250	500	1000	2000	4000	NRC
76mm Baffle	0.26	0.86	1.25	2.02	2.49	2.49	1.65

What is a Noise Reduction Coefficient (NRC)?

You'll find the NRC rating in the specifications of all of our products. This acronym stands for Noise Reduction Coefficient, and is expressed as a single number, a rating that describes the degree to which acoustic products can absorb sound.

You can use NRC values to understand the overall performance of our acoustic wall and ceiling products. The higher the NRC, the better the product is at soaking up the sound.

Performance Indices: Noise Reduction Coefficient (NRC) results represent the absorption coefficients measured at the one third octave bands at 125, 250, 500, 1000, 2000 and 4000 Hz rounded to the nearest 0.05. Acoustic testing has been performed according to the methods mentioned above. Customization of installation of the product could alter the results. Sound Absorption Average (SAA) indicates the absorption coefficient average for the twelve one-third octave bands ranging between 200 and 2500 Hz.

 For questions or additional product information, visit [acoufelt.com.au](https://www.acoufelt.com.au) or call **1800 626 462**

Stack Ceiling Baffles | May 2026