

acouflor
making quiet



Urbicus SoftStep™ Carpet Tiles

Specifications

Application	Floor
Backing	Felt polyester + fibreglass
Pile content	Solution dyed nylon
Style	Multi-level textured loop pile
Recycled content	Backing made from >90% recycled PET
Dimensions	500 x 1000mm
Thickness	11mm +/- 10%
Tiles per box	11 tiles (5.5m²)
Classification	ACCS Extra Heavy Duty & Residential and Extra Heavy Duty Commercial

Guarantees

Wear warranty	15 years*
Castor chair proof	10 years*
Anti-static	Lifetime*
Colourfastness warranty	20 years*
Impervious	15 years

*conditions apply

Shipping



QuickShip

QuickShip products can be despatched within **24 hours**.

Technical Data

Fire test method*	AS/ISO 9239.1-2003
Critical heat flux	Mean result 3.8kW/m²
Smoke deviation rate	Mean result 205%.min
Dimensional stability	-0.05%
Electrostatic propensity	<0.3000 kv
Thermal resistance	0.68m²K/W
Total VOC test method	ISO10580
Total VOC result	<500µg/m2.h (24 hour)
Colourfastness test method	ISO 105-B02
Rating	6-7
Mildew and Odour	HN 0028-2004 Determination of Mildew Growth and Odour on Trim Material. Rating = satisfactory

*note that the fire test report is based on 9.5mm tile

Sustainability

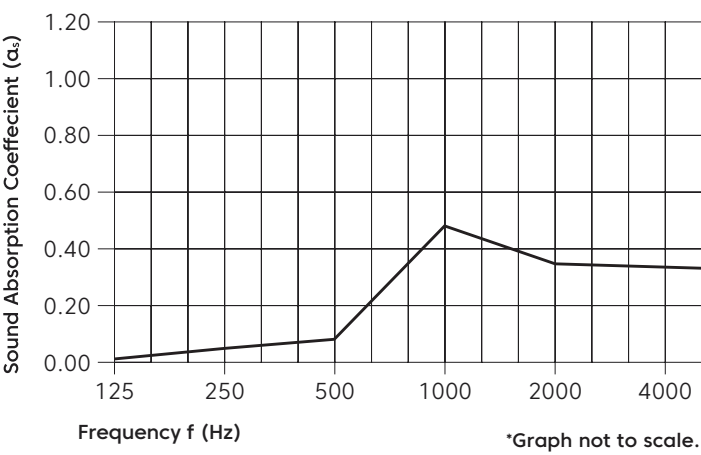
 Backing made from 90% min. recycled PET

 Red List Free Declare Label

Acoustic Performance

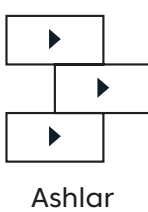
Test method	ASTM C423-2022: Standard Test Method for Sound Absorption and Sound Absorption Coefficients by the Reverberation Room Method
Rating method	AS ISO 11654 -2002: Acoustics - Rating of sound absorption - Material and sytems
Test results	NRC 0.25 SAA 0.23



Frequency (Hz)	125	250	500	1000	2000	4000	NRC
αs	0.01	0.05	0.09	0.48	0.37	0.35	0.25

Performance Indices: **Noise Reduction Coefficient (NRC)** results represent the absorption coefficients measured at the one third octaves bands at 125, 250, 500, 1000, 2000 and 4000 Hz rounded to the nearest 0.05. Acoustic testing has been performed according to the methods mentioned above. Customisation of installation of the product could alter the results. **Sound Absorption Average (SAA)** indicates the absorption coefficient average for the twelve one-third octave bands ranging between 200 and 2500 Hz

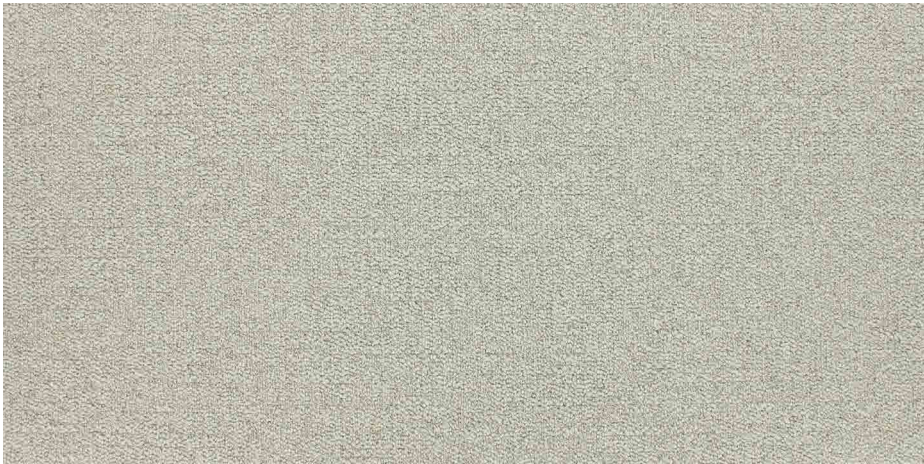
Configurations



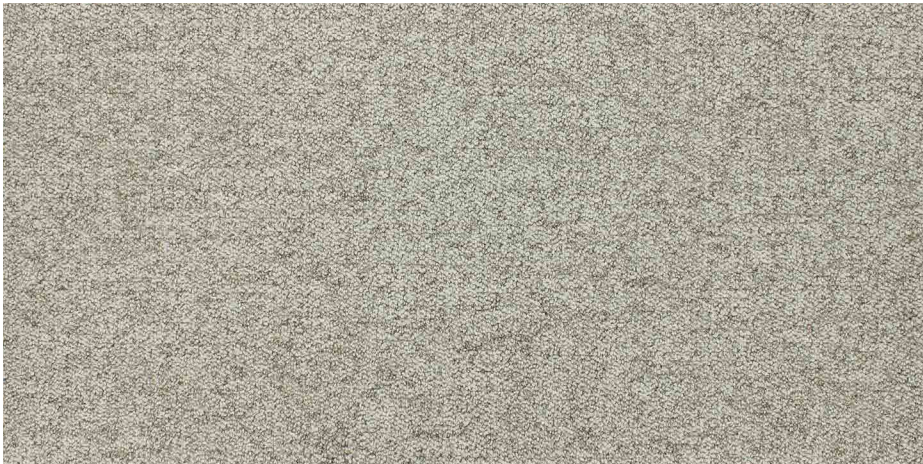
Colourways



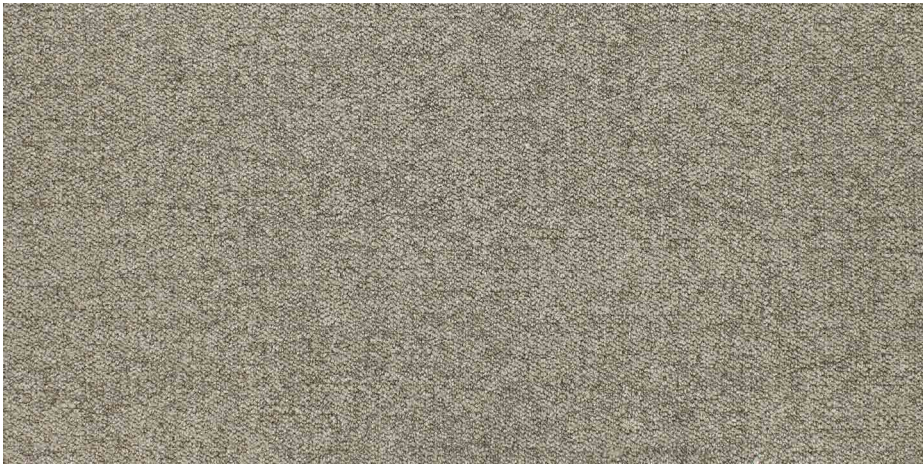
Leederville – UB05



Newtown – UB08



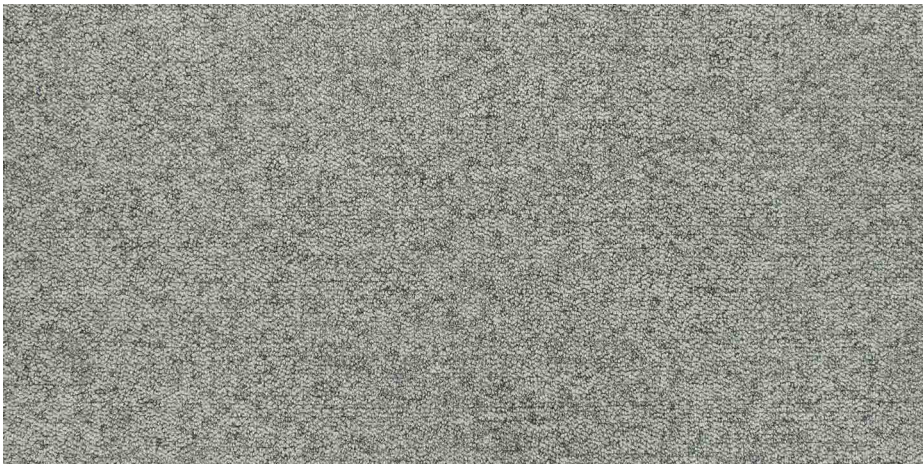
Newstead – UB04



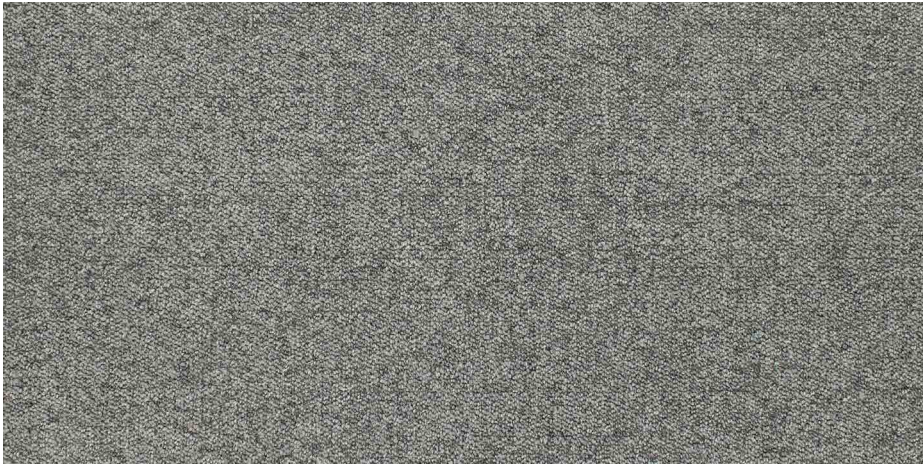
Bowden – UB01



Alexandria – UB03



Parap – UB06



Brunswick – UB02



Braddon – UB07