



# Weave

FilaSorb™ V30

acoufelt  
making quiet

# Product Detail

Application	Wall and ceiling	
	CORE	FACING
Composition	FilaSorb™	230gsm fabric
Material	100% polyester	
Recycled content	80% min	
Panel Sizes	1200 x 2800mm	
	Custom sizes available	
Thickness	32mm +/- 10%	

# Guarantees

Warranty against defects	20 years*
Light fastness warranty	20 years*
	*conditions apply

# QuickShip

## QuickShip Custom




Custom products have an approx. **6-8 week** lead time from payment and order confirmation.


# Technical Data

Fire rating	AS/ISO 9705.1, Group 1
Indoor air quality	SCS-EC10.3-2014 v4.0 meeting standard CDPH/EHLB Standard Method v.1.2-2017, $\leq 0.5\text{mg/m}^3$
Light fastness	ISO 105-B02, 6-7


# Sustainability




Made from 80% min. recycled content




Red List Free Declare Label



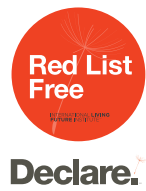
Recyclable at end-of-life



Phenol & formaldehyde free

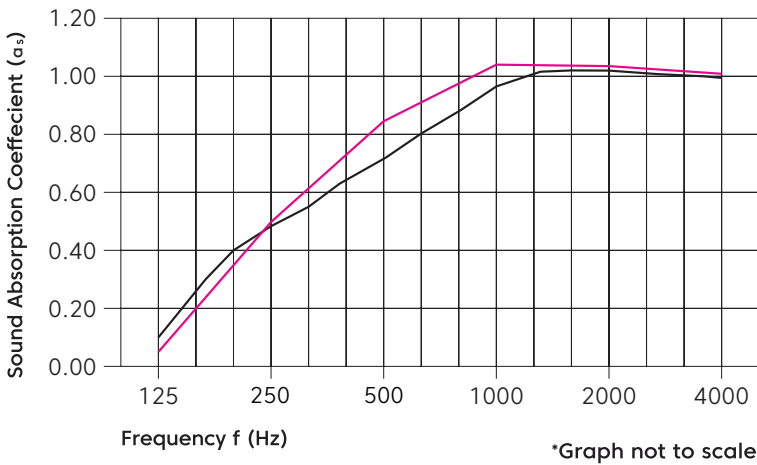


Total VOC's less than  $0.5\text{ mg/m}^3$



# Acoustic Performance

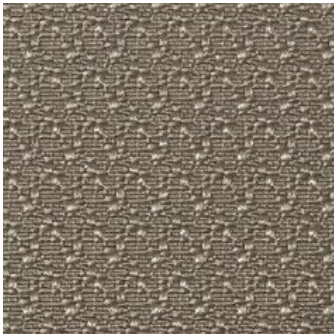
Test method	ISO 354-2006
Results	NRC 0.80 (no air gap) NRC 0.85 (20mm air gap)



Frequency (Hz)	125	250	500	1000	2000	4000	NRC
$\alpha_s$ no air gap	0.12	0.44	0.72	0.91	1.03	0.99	0.80
with 20mm air gap	0.08	0.46	0.84	1.06	1.04	1.02	0.85



# Colorways



Addis



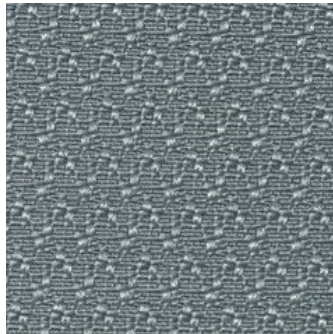
Algiers



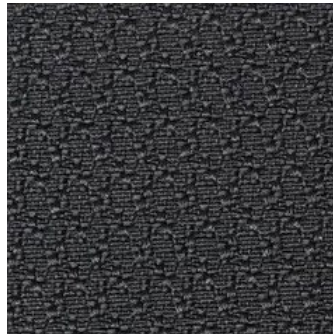
Athens



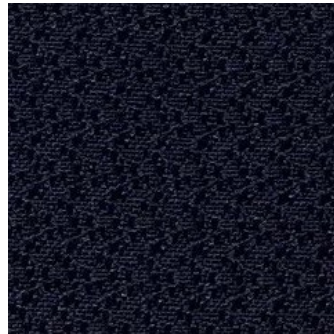
Bogota



Cardiff



Detroit



Edinburgh



Galway



Juneau



Lima



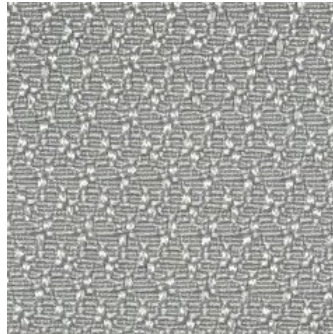
London



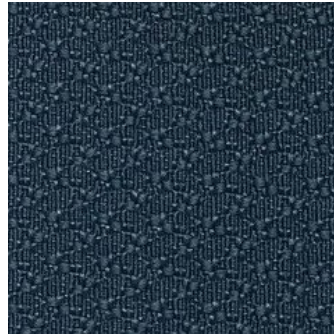
Melbourne



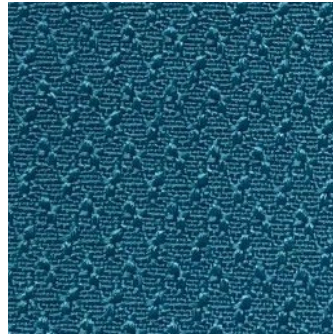
Milan



Minsk



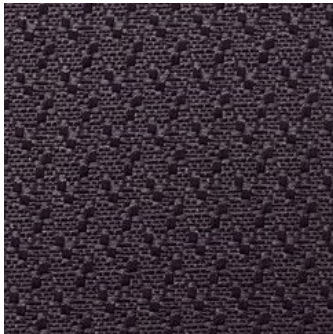
Monaco



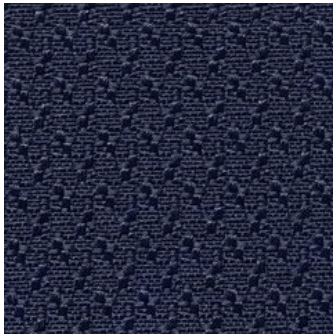
New Delhi



Nuuk



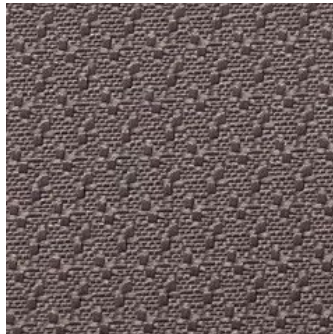
Osaka



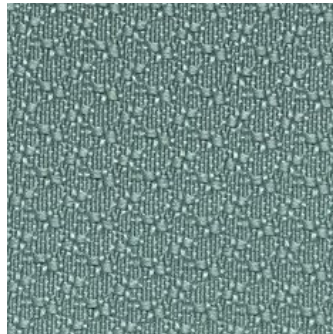
Oslo



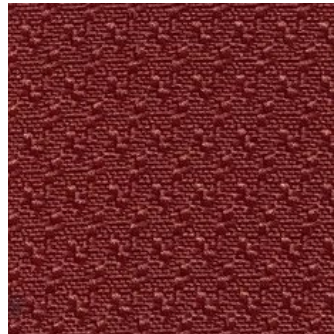
Ottawa



Rome



Santiago



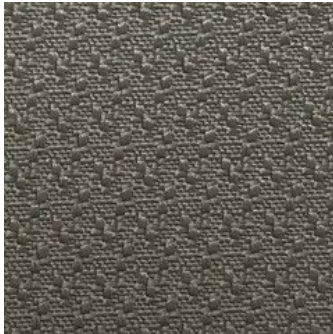
Shanghai



Stockholm



Warsaw



Wellington

\*Colors are subject to availability.  
Please check with your local Representative or Acoufelt Customer Care Team before specifying.



# Finishes

---



Weave – Wrapped



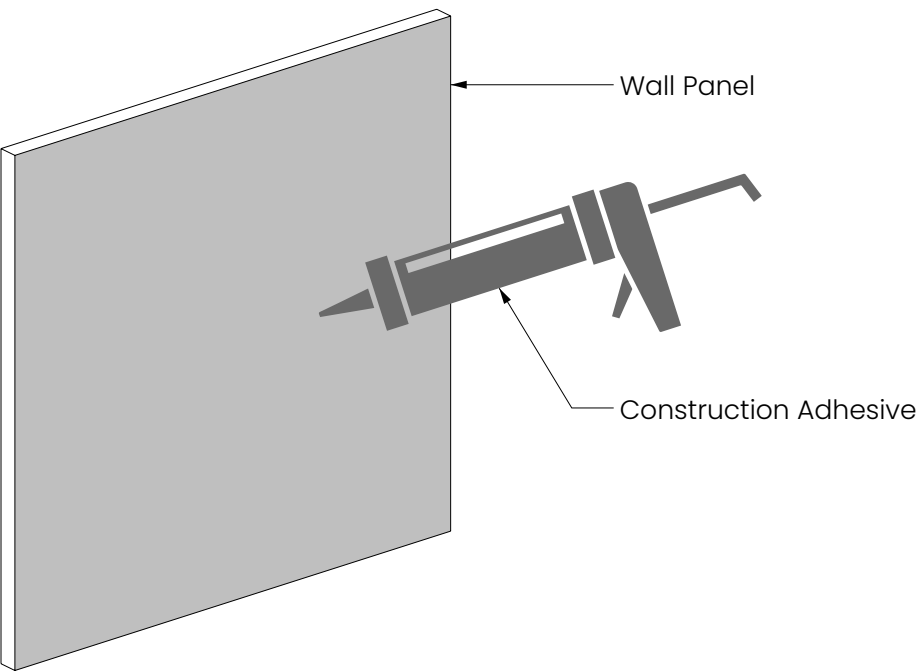
Weave – Cut to edge



Weave – Chamfered

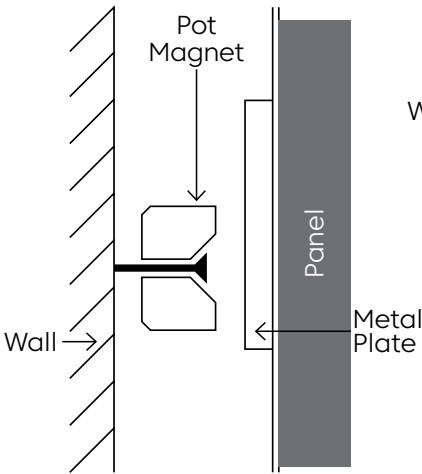
# Mounting Methods

## Constructive Adhesive

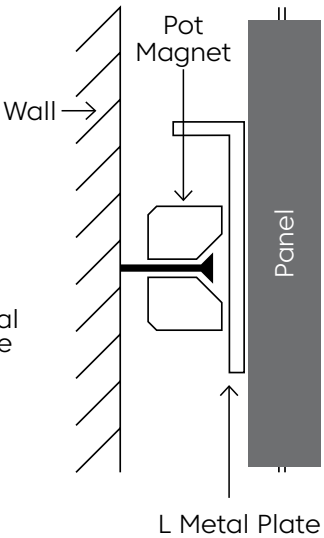


## Pot Magnet Install

### Wall Pot Magnet Install Metal Plate



### Wall Pot Magnet Install L Plate + Metal Plate



### L Plate Wall + Metal Plate Configuration

○ L Metal Plate    × Metal Plate

