

Wing Ceiling Baffles

Premier Collection

Wing Ceiling Baffles give designers a new angle to play with scale and form, light and shadow, color and tone. Combine them with other baffle shapes if you like. They easily install to create a sound-absorbing mass, drop room reverberation, and add visual interest anywhere. Ceiling baffles are a great first course in your soundscaping strategy.

Specifications

Surface	Ceiling
Material	FilaSorb™ polyester felt
Weight	2400gsm 4800gsm
Standard Sizes	Height ranges from end-to-end (2:1) Height A: 102mm up to 610mm H (51mm increments) Height B: 51mm up to 305mm H (25mm increments) Lengths: Range from 305mm up to 2794mm <i>See page 4 for more details. Custom sizes available</i>



Wing Ceiling Baffles in Grey

Technical

NRC Rating	12mm* 1.30 24mm* 1.15
Fire Test	AS ISO 9705:2033 (according to AS 5637.7:2015 requirements) Group 1 0.93
Water Sorption	ASTM C1104-2019 (A Modified) Water sorbed by weight: 0.20% (based on a 12mm thick panel)
Colorfastness	ISO 105-B02, 6-7

* Test results available upon request

Details

Lead Time	Refer to Product Lead Time Matrix
Origin	Australia
Warranty	Product: 20 years* Colorfastness: 20 years*

* Conditions apply

Environmental

Recycled Content	Minimum 60%
Energy	Generated using 40% solar energy
Indoor Air Quality	VOC less than/equal to 0.5mg/m3
Recyclable	100%*
Certifications	Health Product Declaration (HPD)** Environmental Product Declaration Declare Certification - LBC Red List Free (third-party verified) SCS Global Indoor Advantage Gold

* PET is recyclable through participating partners

** HPD only applies to 12mm thickness



© The Health Product Declaration® logo is a registered trademark of HPD Collaborative.

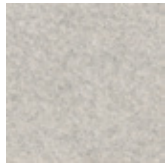


For questions or additional product information, visit acoufelt.com.au or call 1800 626 462

Wing Ceiling Baffles | May 2026



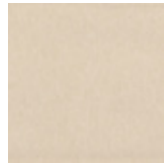
White
WH12



Milkyway
MI74



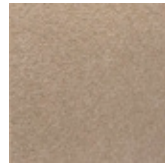
Ivory
IV11



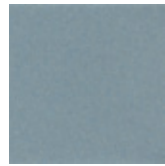
Pearl
PE21



Valentine
VA70



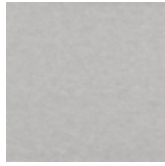
Quartz
QU67



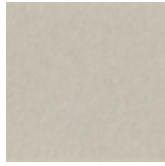
Stonewash
ST72



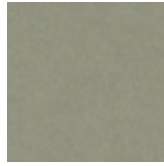
Sea Salt
SE57



Platinum
PL04



Almond
AL55



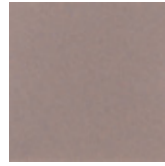
Pistachio
PI25



Turmeric
TU60



Flamingo
FL61



Amethyst
AM69



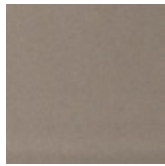
Periwinkle
PE23



Peacock
PE20



Metal
ME03



Mushroom
MU75



Celery
CE65



Wheat
WH68



Peach
PE19



Lilac
LI13



Marine
MA15



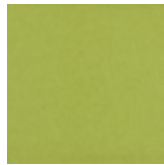
Sencha
SE58



Grey
GR02



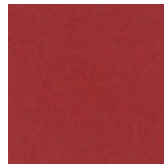
Umber
UM54



Wasabi
WA29



Popcorn
PO26



Currant
CU59



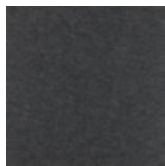
Berry
BE06



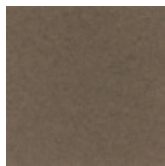
Azure
AZ05



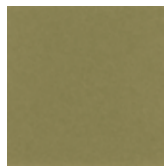
Oregano
OR18



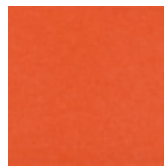
Charcoal
CH01



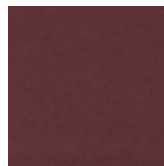
Walnut
WA56



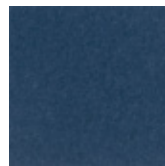
Eucalyptus
EU71



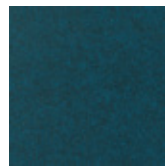
Carrot
CA08



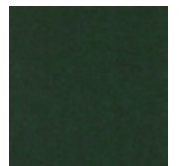
Loganberry
LO77



Granite
GR62



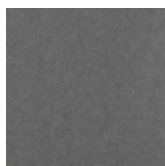
Denim
DE09



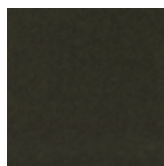
Kale
KA12



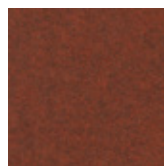
Piano Black
PI24



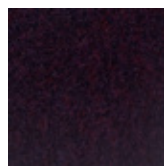
Slate
SL27



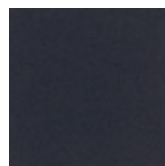
Nori
NO76



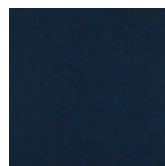
Peppercorn
PE22



Shiraz
SH63



Flint
FL64



Midnight
MI16



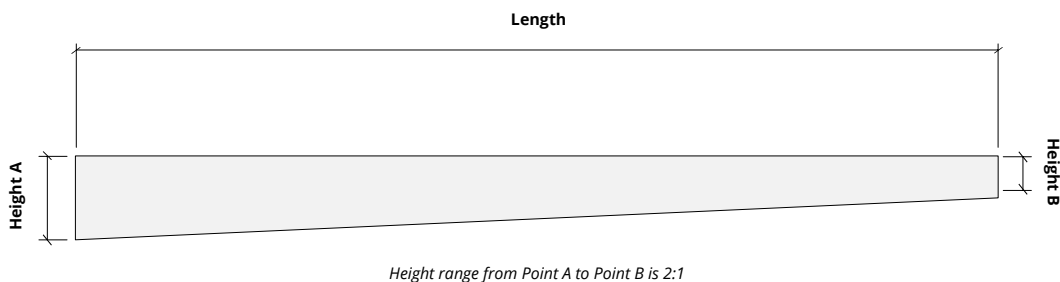
For questions or additional product information,
visit acoufelt.com.au or call 1800 626 462

Sizes

Standard Heights *Height ranges from end-to-end (2:1)*
 Height A: 102mm up to 610mm H (51mm increments)
 Height B: 51mm up to 305mm H (25mm increments)
Custom sizes available

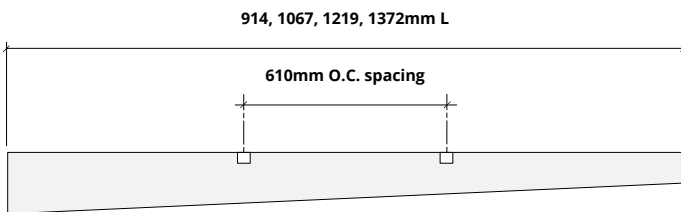
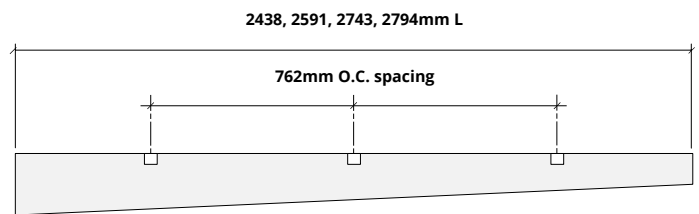
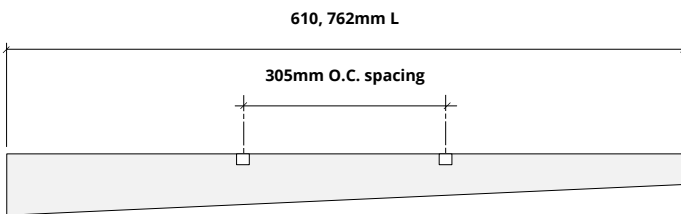
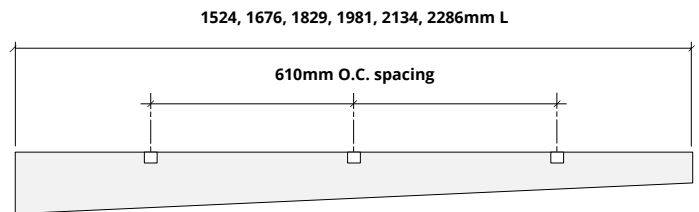
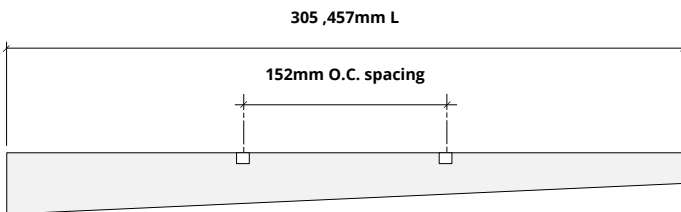
Standard Lengths 305, 457, 610, 762, 914, 1067, 1219, 1372, 1524, 1676, 1829, 1981, 2134, 2286, 2438, 2438, 2743, 2794mmL
Custom sizes available

Height A	Height B
102mm	51mm
152mm	76mm
203mm	102mm
254mm	127mm
305mm	152mm
356mm	178mm
406mm	203mm
457mm	229mm
508mm	254mm
559mm	279mm
610mm	305mm



Hardware Spacing

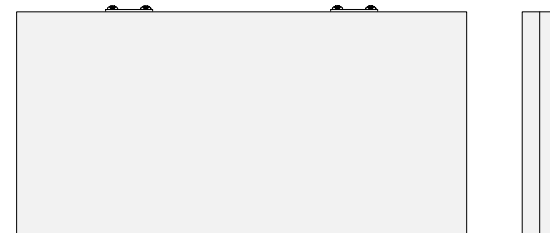
305, 457mm L	152mm on center spacing
610, 762mm L	305mm on center spacing
914, 1067, 1219, 1372mm L	610mm on center spacing
1524, 1676, 1829, 1981, 2134, 2286mm L	610mm on center spacing
2438, 2591, 2743, 2794mm L	762mm on center spacing



12mm Baffle with Stiffener and Nut Plate



24mm Baffle with Nut Plate



How to Specify

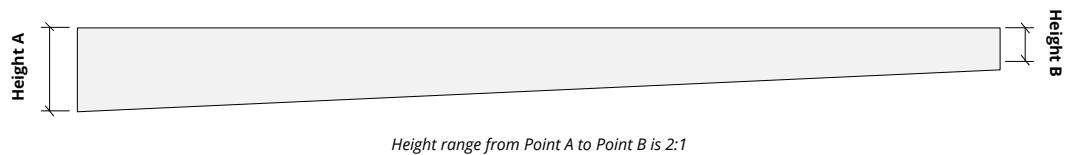
1. Choose Height

2. Choose Length

3. Choose Colorways

Select Height A based on desired design. See chart below for corresponding Height B.

Height A	Height B
102mm	51mm
152mm	76mm
203mm	102mm
254mm	127mm
305mm	152mm
356mm	178mm
406mm	203mm
457mm	229mm
508mm	254mm
559mm	279mm
610mm	305mm



1. Choose Height

2. Choose Length

3. Choose Colorways

Arc baffles come in the standard lengths of: 305, 457, 610, 762, 914, 1067, 1219, 1372, 1524, 1676, 1829, 1981, 2134, 2286, 2438, 2591, 2743, 2794mm L. Custom sizes are available.

1. Choose Height

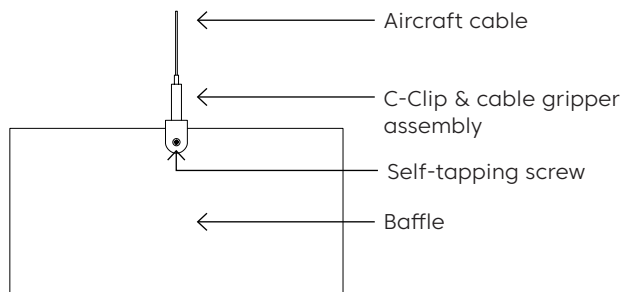
2. Choose Length

3. Choose Colorways

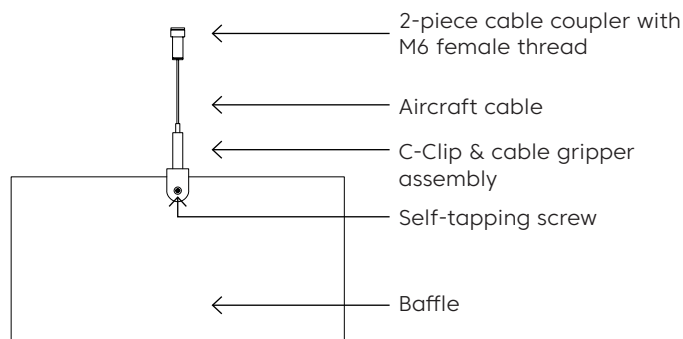
See colorway choices on page 3.

Mounting Methods

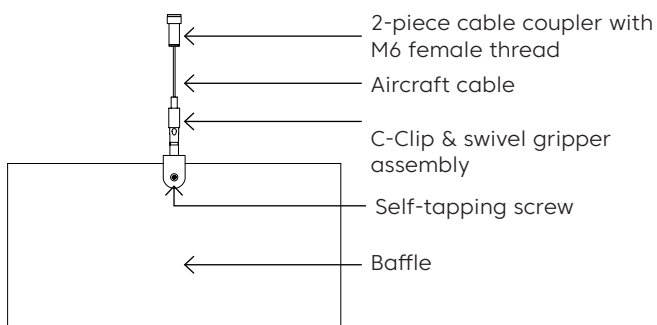
Cable



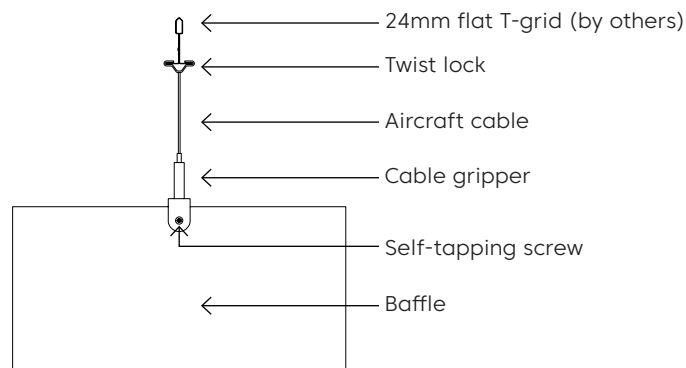
Cable to deck



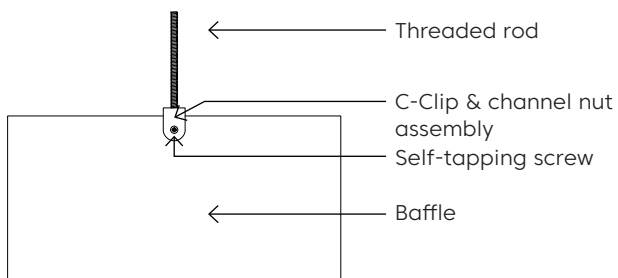
Swivel cable to deck



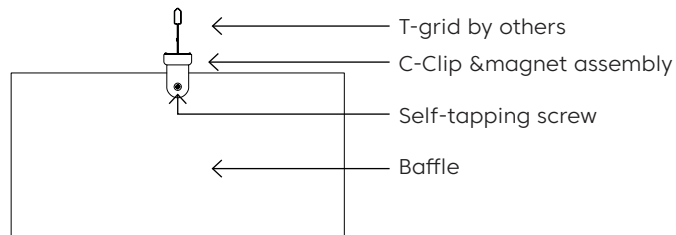
Cable to T-grid



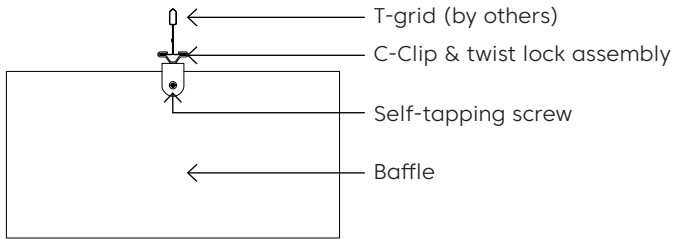
Threaded Rod



Magnet to T-grid

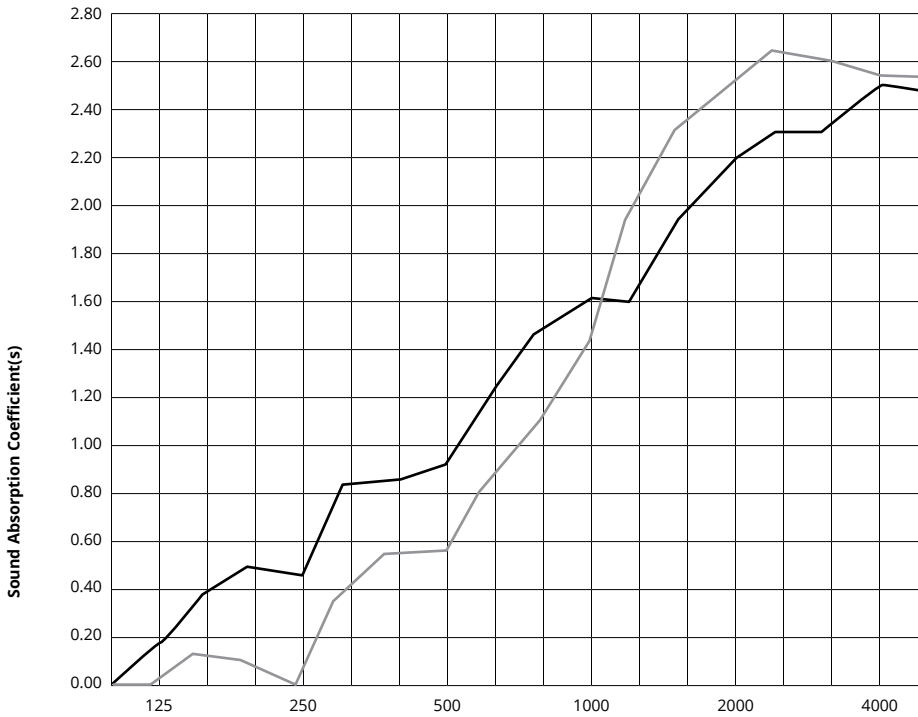


Twist lock to T-grid



Acoustic Performance

Test Method	ASTM E795-16	
Install Method	J-600	
Rating Method	ASTM C423-17	
Mounting Method	Sample tested 6 baffles 2794mmL x 305mmD, 12mm and 24mm thickness, sample hanging 600mm from floor and 152mm O.C. from each other	
Test Results	12mm NRC 1.30 SAA 1.32, no air gap	24mm NRC 1.15




	Frequency f (Hz)	125	250	500	1000	2000	4000	NRC
	12mm	0.17	0.44	.93	1.62	2.20	2.51	1.30
	24mm	0.01	0.00	0.56	1.45	2.52	2.55	1.15

What is a Noise Reduction Coefficient (NRC)?

You'll find the NRC rating in the specifications of all of our products. This acronym stands for Noise Reduction Coefficient, and is expressed as a single number, a rating that describes the degree to which acoustic products can absorb sound.

You can use NRC values to understand the overall performance of our acoustic wall and ceiling products. The higher the NRC, the better the product is at soaking up the sound.

Performance Indices: Noise Reduction Coefficient (NRC) results represent the absorption coefficients measured at the one third octave bands at 125, 250, 500, 1000, 2000 and 4000 Hz rounded to the nearest 0.05. Acoustic testing has been performed according to the methods mentioned above. Customization of installation of the product could alter the results. Sound Absorption Average (SAA) indicates the absorption coefficient average for the twelve one-third octave bands ranging between 200 and 2500 Hz.

 For questions or additional product information, visit acoufelt.com.au or call **1800 626 462**

Wing Ceiling Baffles | May 2026